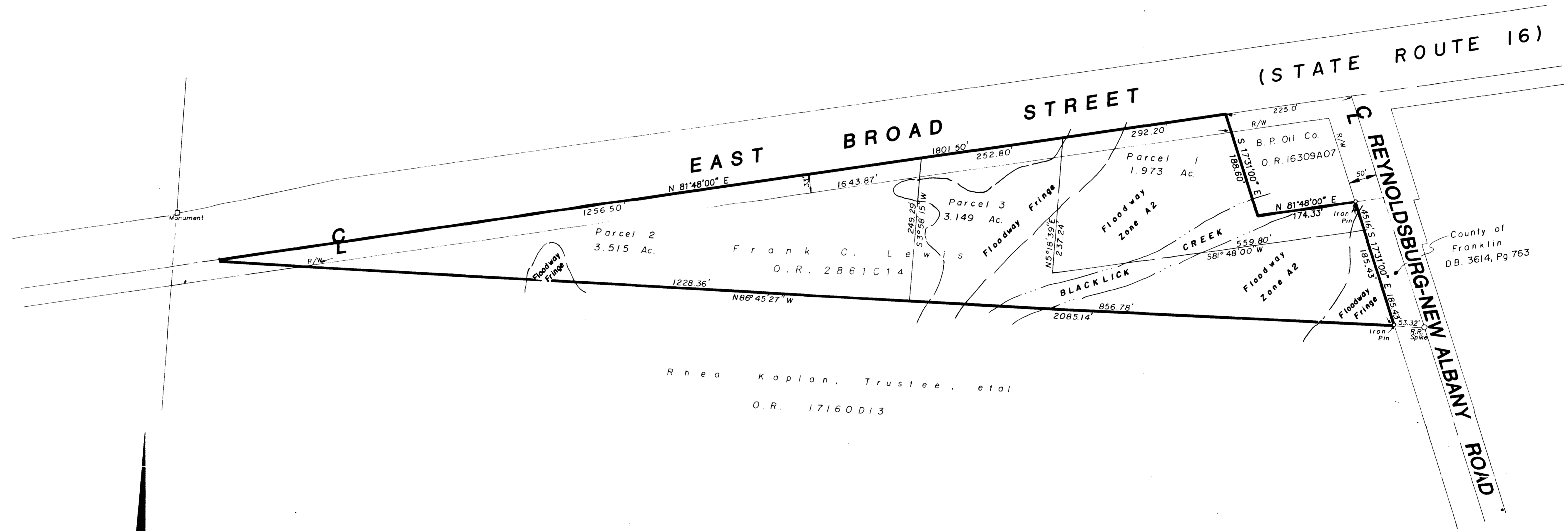


SURVEY OF ACREAGE PARCEL
 Located In Quarter Township 4, Township 1, Range 16,
 United States Military Lands
 City Of Columbus, Franklin County, Ohio



Rhea Kaplan, Trustee, et al
 O.R. 17160D13

NOTE:
 The bearings shown hereon are based on the same meridian
 as the plat of record in Plat Book 58, Pages 38 & 39.

- PARCEL 1
 1.763 Acre Floodway
 0.210 Acre Floodway Fringe
 0.226 Acre R/W
- PARCEL 2
 0.12 Acre Floodway Fringe
 0.888 Acre R/W
- PARCEL 3
 1.802 Acre Floodway
 0.980 Acre Floodway Fringe
 0.191 Acre R/W

Surveyed & Platted
 By
EVANS, MECHWART, HAMBLETON, & TILTON INC.
 CONSULTING ENGINEERS AND SURVEYORS
 170 MILL STREET
 GAHANNA, OHIO 43230
 614/471-5150

By *Thomas D. Silbald*
 Thomas D. Silbalds
 Registered Surveyor No. 5908
 SCALE 1" = 100' DECEMBER 9, 1991
 100' 00' 60' 40' 20' 0'
 100' 200'
 GRAPHIC SCALE 1" = 100'

