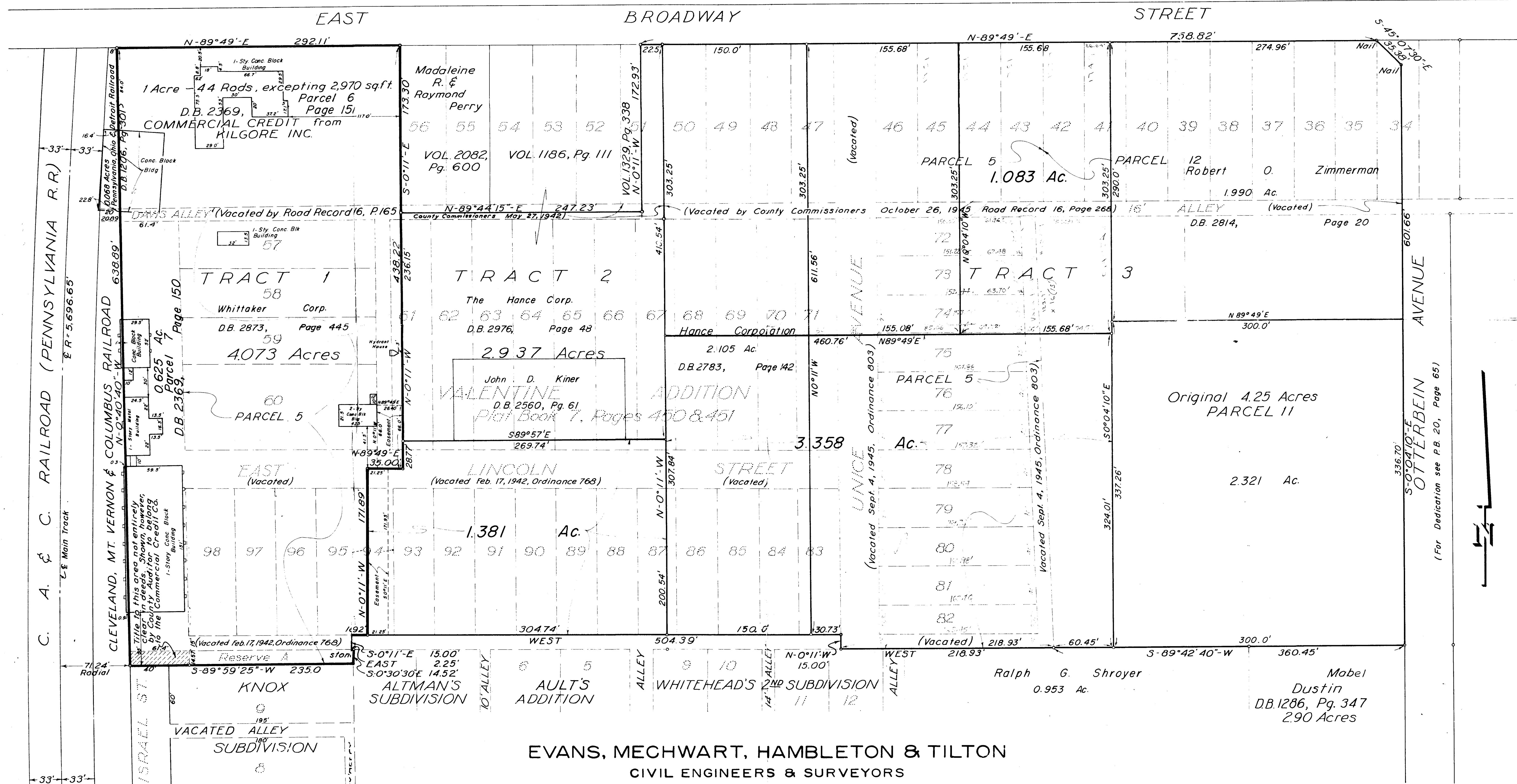


M-4
M-4

Vol 3 Pg 22

BOUNDARY SURVEY OF ACREAGE PARCELS FOR OTTERBEIN COLLEGE

FRANKLIN COUNTY, BLENDON TOWNSHIP, VILLAGE OF WESTERVILLE



EVANS, MECHWART, HAMBLETON & TILTON
CIVIL ENGINEERS & SURVEYORS

GAHANNA, OHIO

SCALE: 1" = 50'

—○— = IRON PIN SET
—●— = IRON PIN FOUND

MAY, 1962
REVISED OCTOBER, 1967
REVISED JUNE 10, 1969
REVISED JULY 18, 1969
REVISED SEPTEMBER 24, 1969
REVISED DECEMBER 4, 1969

By *R. G. Mechwart*
Registered Surveyor No. 4072