

CITY OF WESTERVILLE, OHIO
FRANKLIN COUNTY
QUARTER TOWNSHIP 2 U.S.M.L.
T. 2 N., R 17 W.

A-1
ARC 25.41'
RAD 92.50'
Δ 15'44"26"
CHORD N 4'26"57" W
CH. 25.33

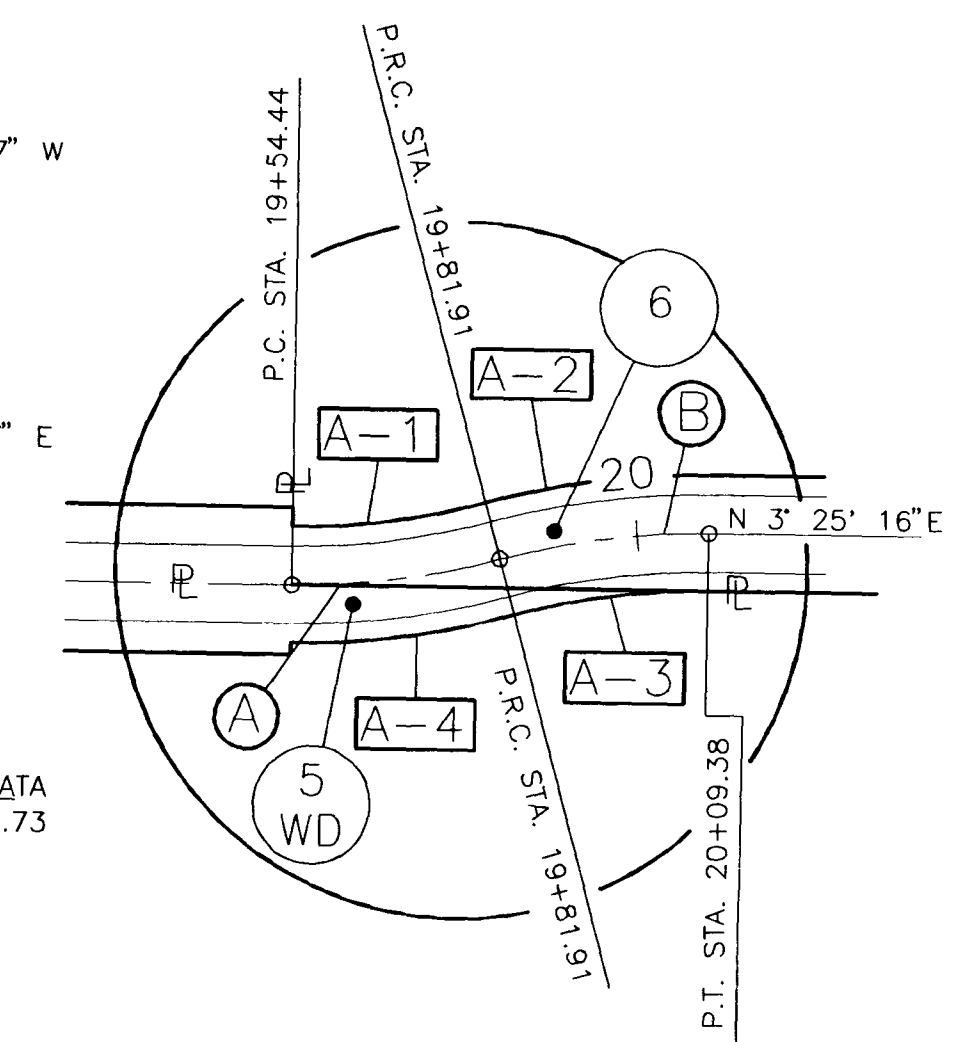
A-2
ARC 29.53'
RAD 107.50'
Δ 15'44"26"
CHORD N 4'26"57" W
CH. 29.44

A-3
ARC 25.41'
RAD 92.50'
Δ 15'44"26"
CHORD S 4'26"57" E
CH. 25.33

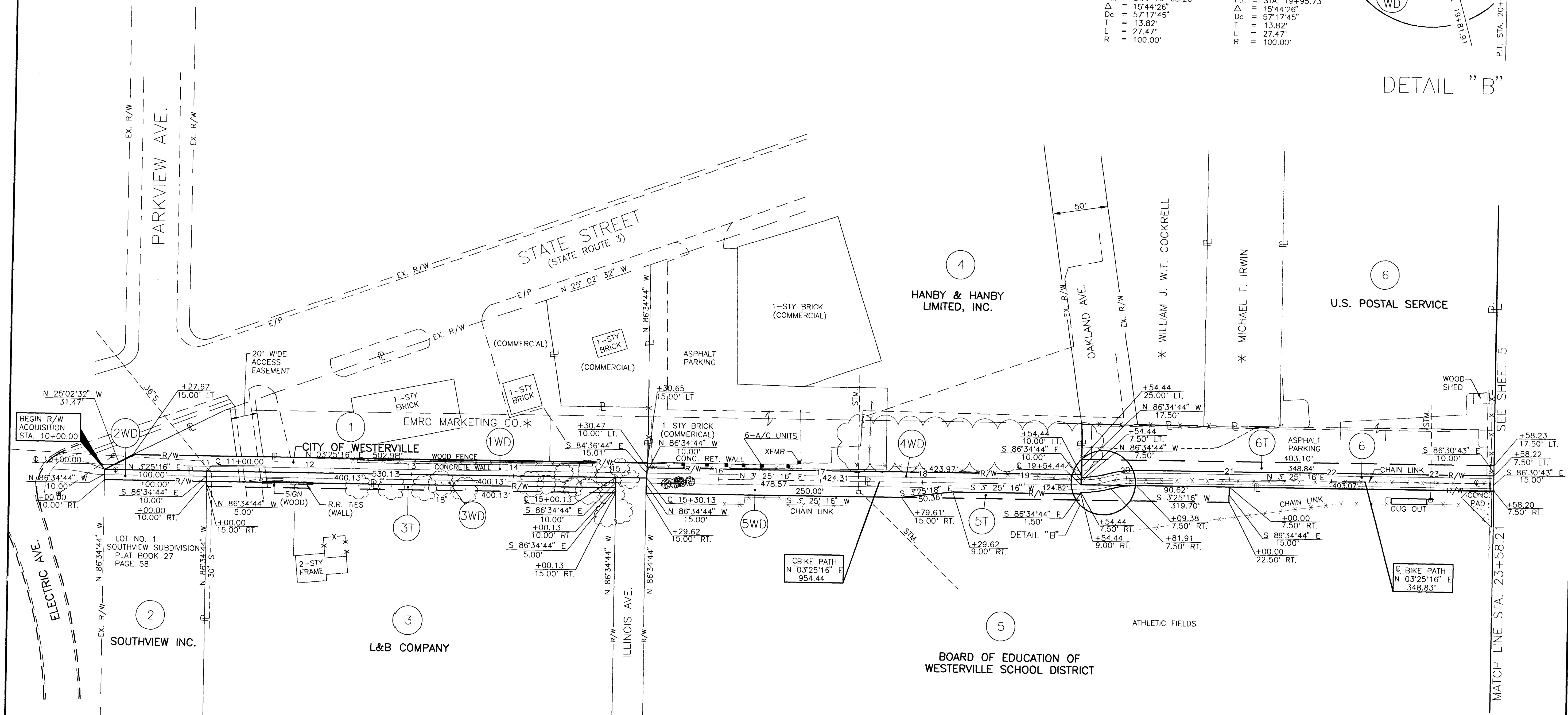
A-4
ARC 29.53'
RAD 107.50'
Δ 15'44"26"
CHORD S 4'26"57" E
CH. 29.44

(A)
CENTERLINE CURVE DATA
P.I. = STA. 19+68.26
Δ = 15'44"26"
Dc = 57'17"45"
T = 13.82'
L = 27.47'
R = 100.00'

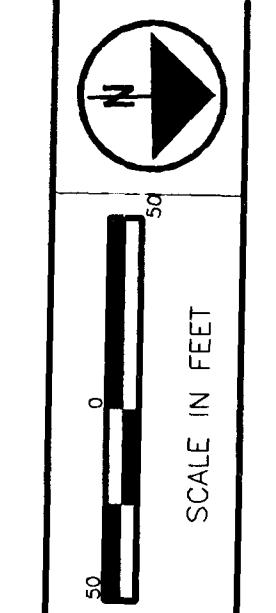
(B)
CENTERLINE CURVE DATA
P.I. = STA. 19+95.73
Δ = 15'44"26"
Dc = 57'17"45"
T = 13.82'
L = 27.47'
R = 100.00'



DETAIL "B"



* NO TAKE REQUIRED



PD NO. 4581

RIGHT OF WAY PLAN
STA. 10+00.00 TO STA. 23+58.21

FRA-WESTERVILLE
BIKEWAY

| | | |
|------|----------|-----------------|
| 1 | 09-21-98 | R/W Post Office |
| | | |
| | | |
| | | |
| | | |
| REV. | DATE | DESCRIPTION |
| | | |
| | | |
| | | |

4/9

32/37