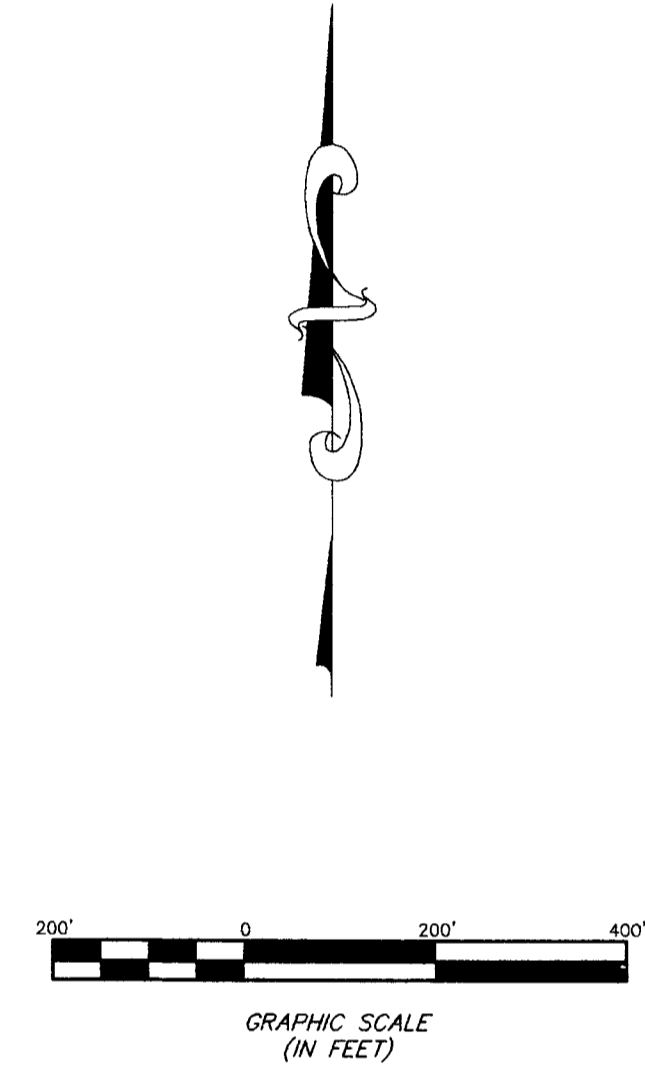
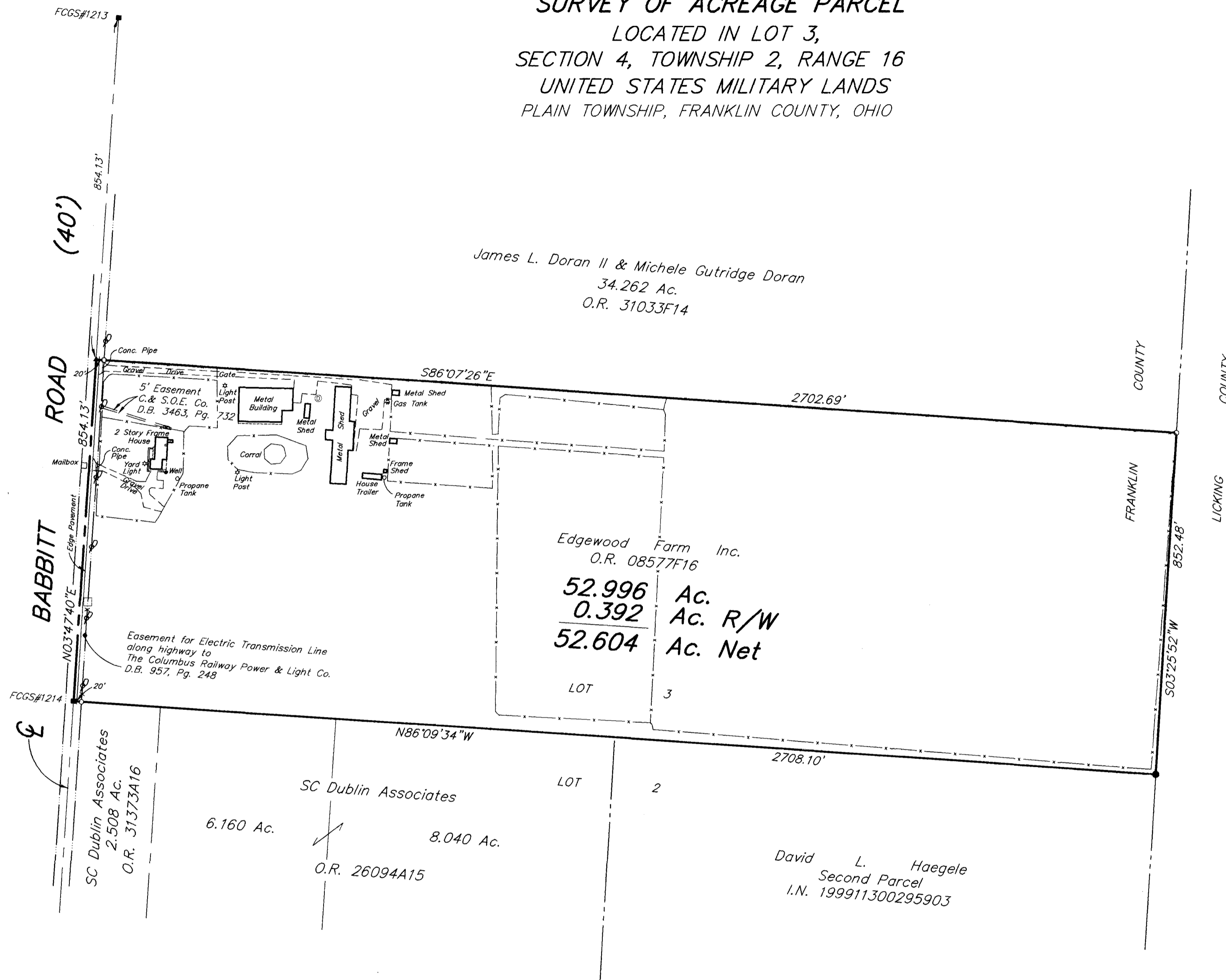


**SURVEY OF ACREAGE PARCEL**  
 LOCATED IN LOT 3,  
 SECTION 4, TOWNSHIP 2, RANGE 16  
 UNITED STATES MILITARY LANDS  
 PLAIN TOWNSHIP, FRANKLIN COUNTY, OHIO

According to the Federal Emergency Management Agency's Flood Insurance Rate Map (dated August 2, 1995), the subject parcel shown hereon lies within Zone X (areas determined to be outside 500-year flood plain), Community Panel No. 39049C0195 G.

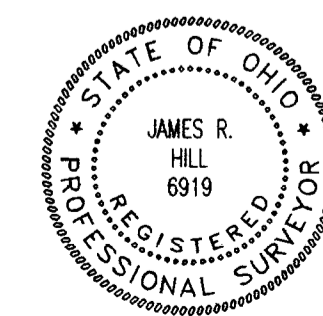


SURVEYED & PREPARED  
 BY  
**EMH&T** INC.  
 CONSULTING ENGINEERS & SURVEYORS  
 170 MILL STREET  
 GAHANNA, OHIO 43230  
 (614) 471-5150

CERTIFICATION: (Commitment No. 120013435)

To: Edgewood Farms, Inc. and Stewart Title Agency Of Columbus

This is to certify, to the best of my knowledge, information and belief, that this map and the survey on which it is based were made in accordance with "Minimum Standard Detail Requirements for ALTA /ACSM and NSPS in 1999", and includes items 1, 3, 4 & 13 of Table A "Optional Survey Responsibilities & Specification" thereof, and pursuant to the Accuracy Standards as adopted by ALTA, ACSM & NSPS in effect on the date of this certification.



By James R. Hill  
 Professional Surveyor No. 6919

SCALE: 1" = 200'      DECEMBER 11, 2001

- — — — — = FENCE
  - ⊠ = TRANSFORMER
  - = CATCH BASIN
  - ⊕ = STORM MANHOLE
  - ⊙ = ELECTRIC POLE
  - = MON. FND.
  - = I.P. FND.
  - = I.P. SET
  - = MAG. NAIL FND.
  - = MAG. NAIL SET
  - ▲ = R.R. SPK. FND.
  - △ = R.R. SPK. SET
  - ◆ = P.K. NAIL FND.
- I.P.S. Set are 13/16" I.D. Iron pipe w/ cap inscribed EMH&T, Inc.

**BASIS OF BEARINGS:** Bearings are based on the Ohio State Plane Coordinate System as per NAD83. Control for bearings was from coordinates of monuments 2208 & 6612, having a bearing of North 86°23'15" West, established by the Franklin County Engineering Department, using Global Positioning System procedures and equipment.

Q:\PROJECT\20011656.01\DWG\11656BV.DWG - O XREFS: - PLOTTED BY RPARKER - December 11, 2001 - 9:10 AM