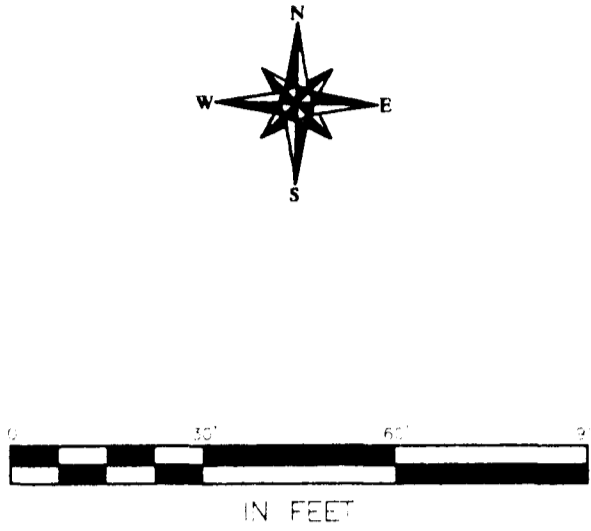


SURVEY OF 17.380 ACRE TRACT
 Located In
 Quarter Township 4, Township 1, Range 16
 United States Military Lands
 City Of Columbus, Franklin County, Ohio

B. & O. RAILROAD & P.C.C. & ST. LOUIS RAILROAD

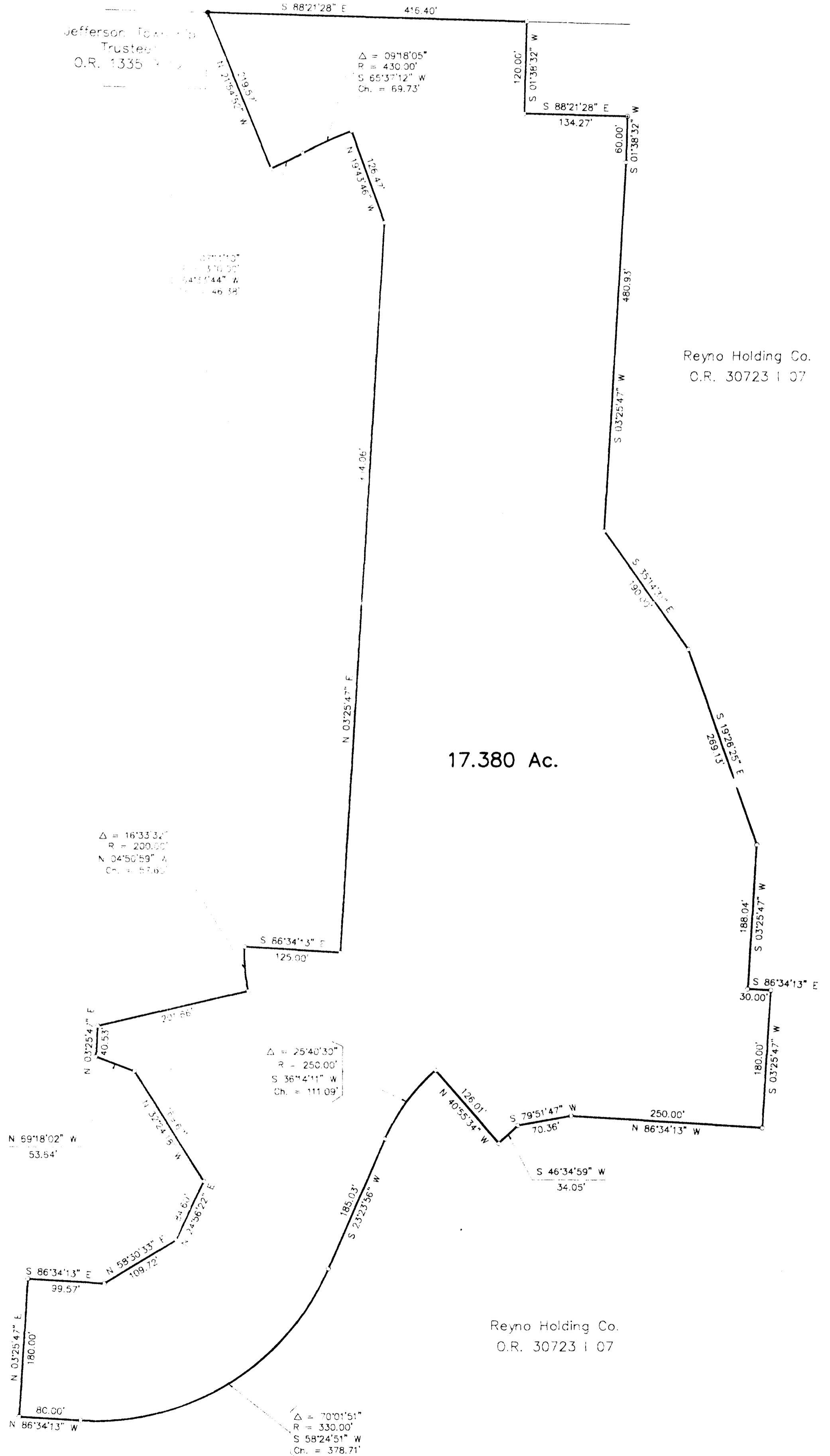


BASIS OF BEARINGS : The bearings shown on this plat are based on the same meridian as the bearings used in the metes and bounds description for a 293.794 acre tract described in the deed of record in Official Record 16896 E 17, Recorder's Office, Franklin County, Ohio, in which the northern portion of Waggoner Road has a bearing of North 3°25'47" East.



By *Ronald H. Gilbert*
 Professional Surveyor No. 5425

SCALE 1" = 30' JULY 16, 1996



- ▲ = I.P. Spk. End
 - △ = R.P. Spk. Set
 - = I.P. End
 - = I.P. Set
- 1/2" Set and 3/4" O.D. Iron Pin
 3/4" long with inscribed "EWT"

NOTE: After construction
 Iron Pins will be set.