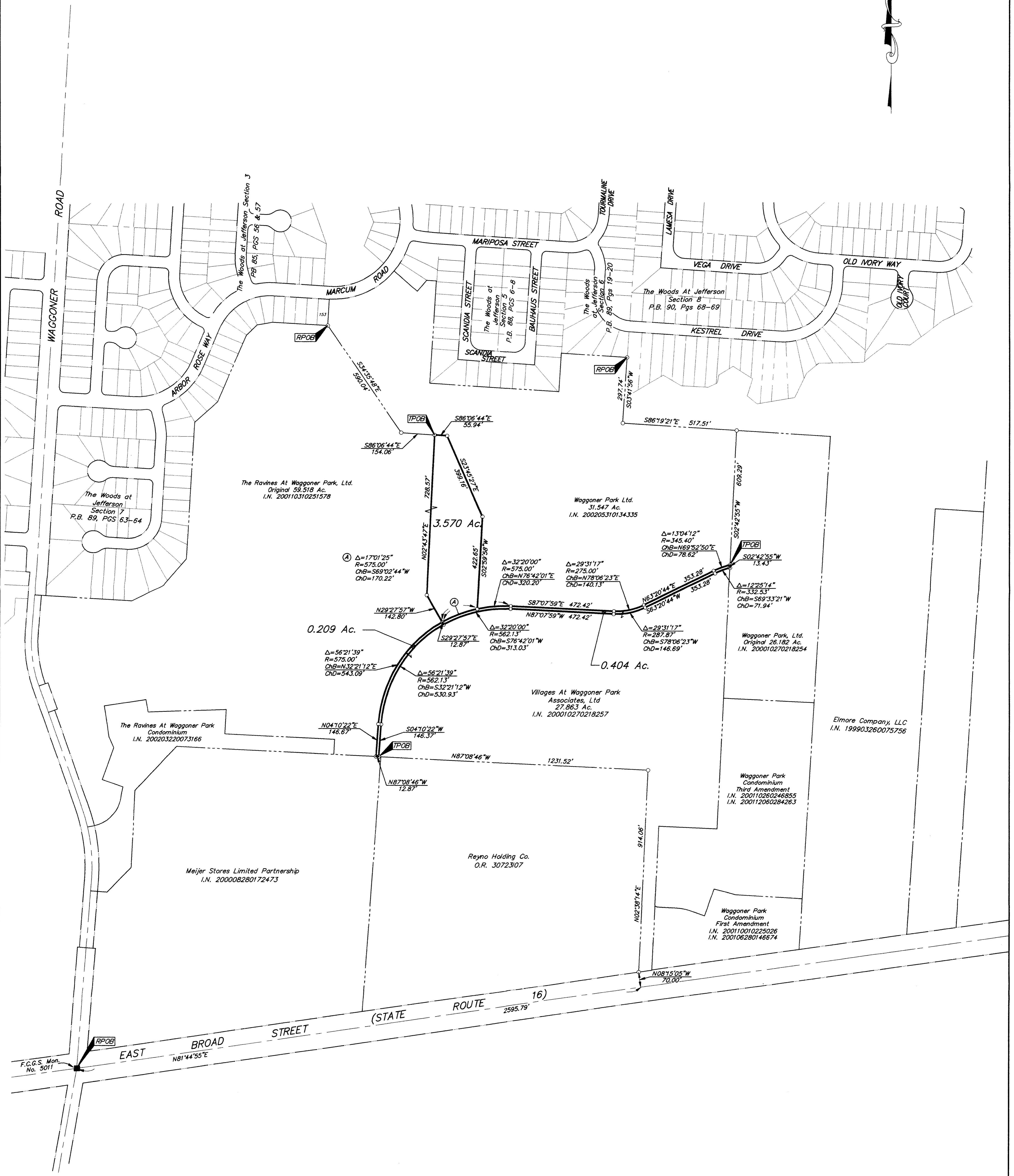
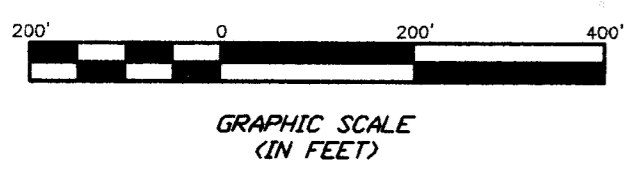


SURVEY OF ACRAGE PARCELS
 QUARTER TOWNSHIP 4, TOWNSHIP 1, RANGE 16
 UNITED STATES MILITARY LANDS
 CITY OF COLUMBUS, FRANKLIN COUNTY, OHIO



- = MON. FND.
 - = I.P. FND.
 - = I.P. SET
 - = MAG. NAIL FND.
 - = MAG. NAIL SET
 - ▲ = R.R. SPK. FND.
 - △ = R.R. SPK. SET
 - = P.K. NAIL FND.
- I.P.S. Set are 1 1/2" I.D. Iron pipe w/ cap inscribed EMHT INC



BASIS OF BEARINGS: The bearings hereon are based on the same system as that description for a 293.794 acre tract as shown of record in Official Record 16896E17.

SURVEYED & PREPARED
BY
EMHT
 CONSULTING ENGINEERS & SURVEYORS
 170 MILL STREET
 GAHANNA, OHIO 43230
 (614) 471-5150

By *Jeffrey Miller*
 Registered Professional Surveyor No. 7211

NOVEMBER 6, 2002