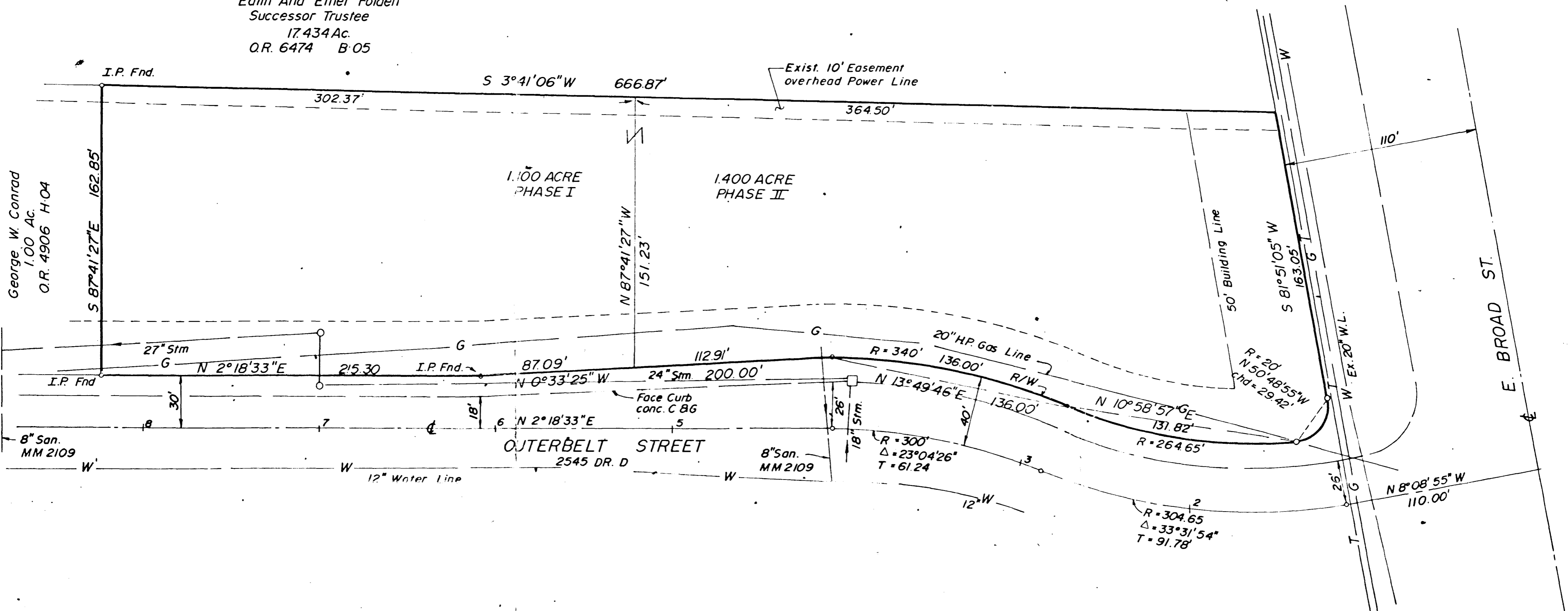


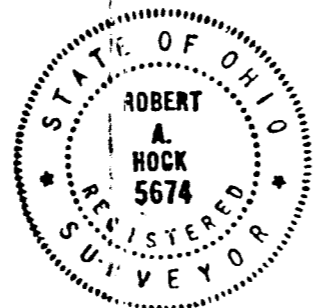
Edith And Ethel Folden
 Successor Trustee
 17.434 Ac.
 O.R. 6474 B-05



Plat of Lands of Richard E. And Kathleen Cooley
 Part of Lot 2 Outerbelt East Commerce Park City of
 Columbus, Franklin County, Ohio PB 46, Page 4
 O.R. 12265 J09

I hereby certify that this plat was prepared from an actual survey of the premises and that boundary shown is correct.

Robert A. Hock
 Ohio Surveyor No 5674
 Date 5/25/89



M-96-JJ

Prepared By:
 HUGHES ENGINEERING
 6161 BUSCH BLVD
 COLUMBUS, OHIO

Basis of Bearings: P.B. 46 page 4, Official Record 12265 J09