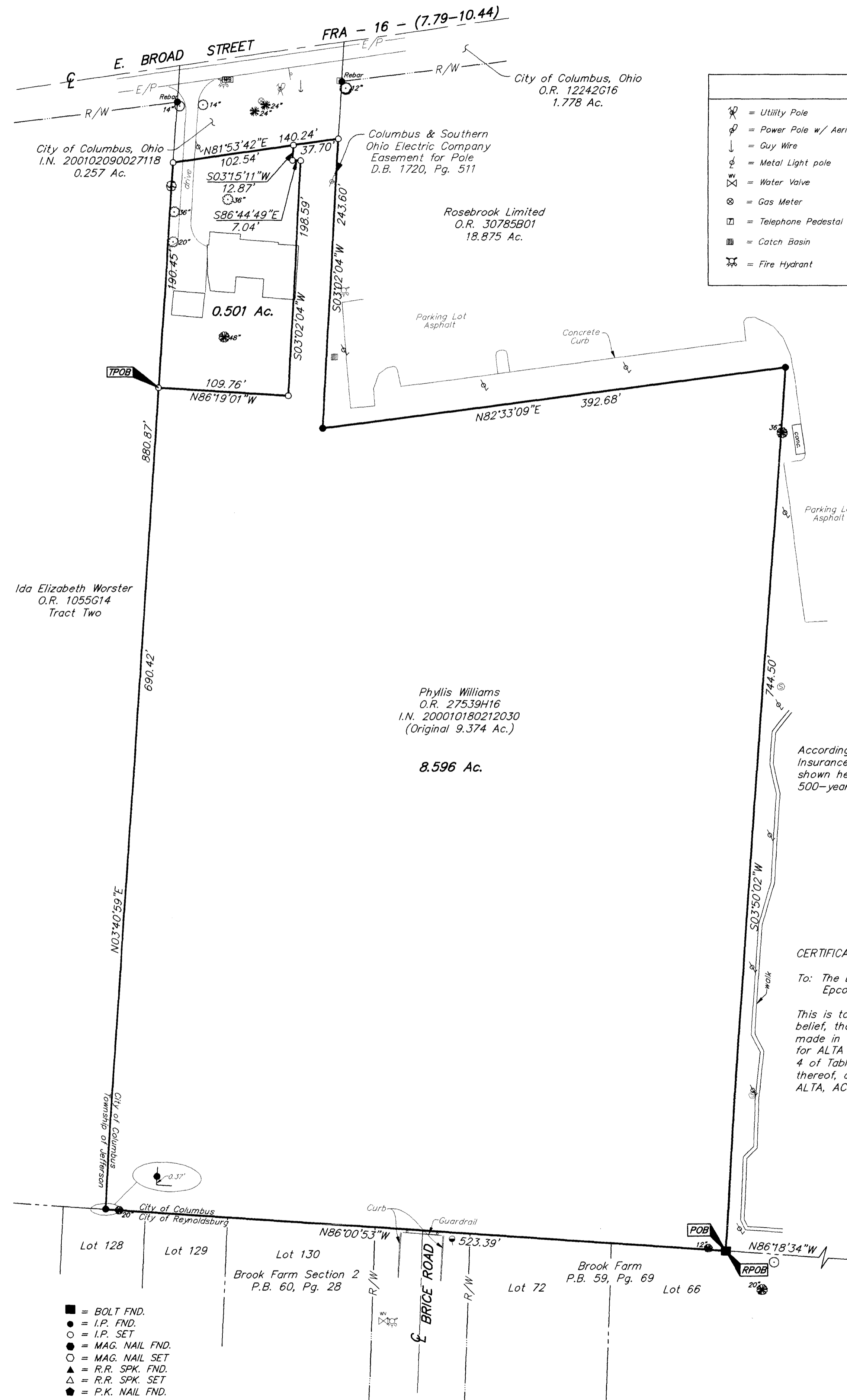


SURVEY OF ACREAGE PARCEL
QUARTER TOWNSHIP 3, TOWNSHIP 1, RANGE 16
UNITED STATES MILITARY LANDS
CITY OF COLUMBUS, FRANKLIN COUNTY, OHIO



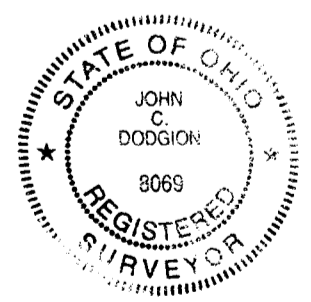
LEGEND	
	= Utility Pole
	= Power Pole w/ Aerial Service
	= Guy Wire
	= Metal Light pole
	= Water Valve
	= Gas Meter
	= Telephone Pedestal
	= Catch Basin
	= Fire Hydrant
	= Sign
	= Gas Maker Post
	= Mail Box
	= Storm Line
	= Storm Manhole
	= Sanitary Manhole
	= Sanitary Line
	= Centerline
	= Right of Way Line
	= Edge of Pavement

Note:
 Zoning information was not made available to the undersigned as of the date of this survey.

UTILITY STATEMENT:
 The utilities shown hereon have been located from field survey information and existing drawings. The surveyor makes no guarantee that the utilities shown comprise all such utilities in the area, either in service or abandoned. The surveyor further does not warrant that the utilities shown are in the exact location indicated although he does certify that they are located as accurately as possible from information available.

According to the Federal Emergency Management Agency's Flood Insurance Rate Map (dated August 2, 1995), the subject parcel shown hereon lies within Zone X (areas determined to be outside 500-year flood plain), Community Panel No. 39049C277 G

CERTIFICATION: (Commitment No. 22160258 Com)
 To: The Epcon Group, Inc., The Chicago Title Insurance Company, Epcon Broadmere, LLC & Park National Bank:
 This is to certify, to the best of my knowledge, information and belief, that this map and the survey on which it is based were made in accordance with "Minimum Standard Detail Requirements for ALTA /ACSM and NSPS in 1999", and includes items 1, 3, & 4 of Table A "Optional Survey Responsibilities & Specification" thereof, and pursuant to the Accuracy Standards as adopted by ALTA, ACSM & NSPS in effect on the date of this certification.

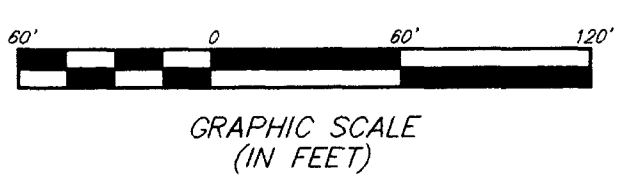


By *John C. Dodgin*
 Professional Surveyor No. 8069

Surveyed & Prepared By
EVANS, MECHWART, HAMBLETON & TILTON INC.
 CONSULTING ENGINEERS & SURVEYORS
 170 MILL STREET
 GAHANNA, OHIO 43230
 614/471-5150

SCALE: 1" = 60'
 MAY 01, 2002
 REVISED MAY 09, 2002
 REVISED MAY 22, 2002

- = BOLT FND.
 - = I.P. FND.
 - = I.P. SET
 - = MAG. NAIL FND.
 - = MAG. NAIL SET
 - ▲ = R.R. SPK. FND.
 - △ = R.R. SPK. SET
 - = P.K. NAIL FND.
- I.P.S. Set are 13/16" I.D. Iron pipe W/ cap inscribed EMHT INC



BASIS OF BEARINGS: Bearings are based on the Ohio State Plane Coordinate System, South Zone, as per NAD83. Control for bearings was from coordinates of monuments TRURO & 68 WSM RESET, as established by the Franklin County Engineering Department.