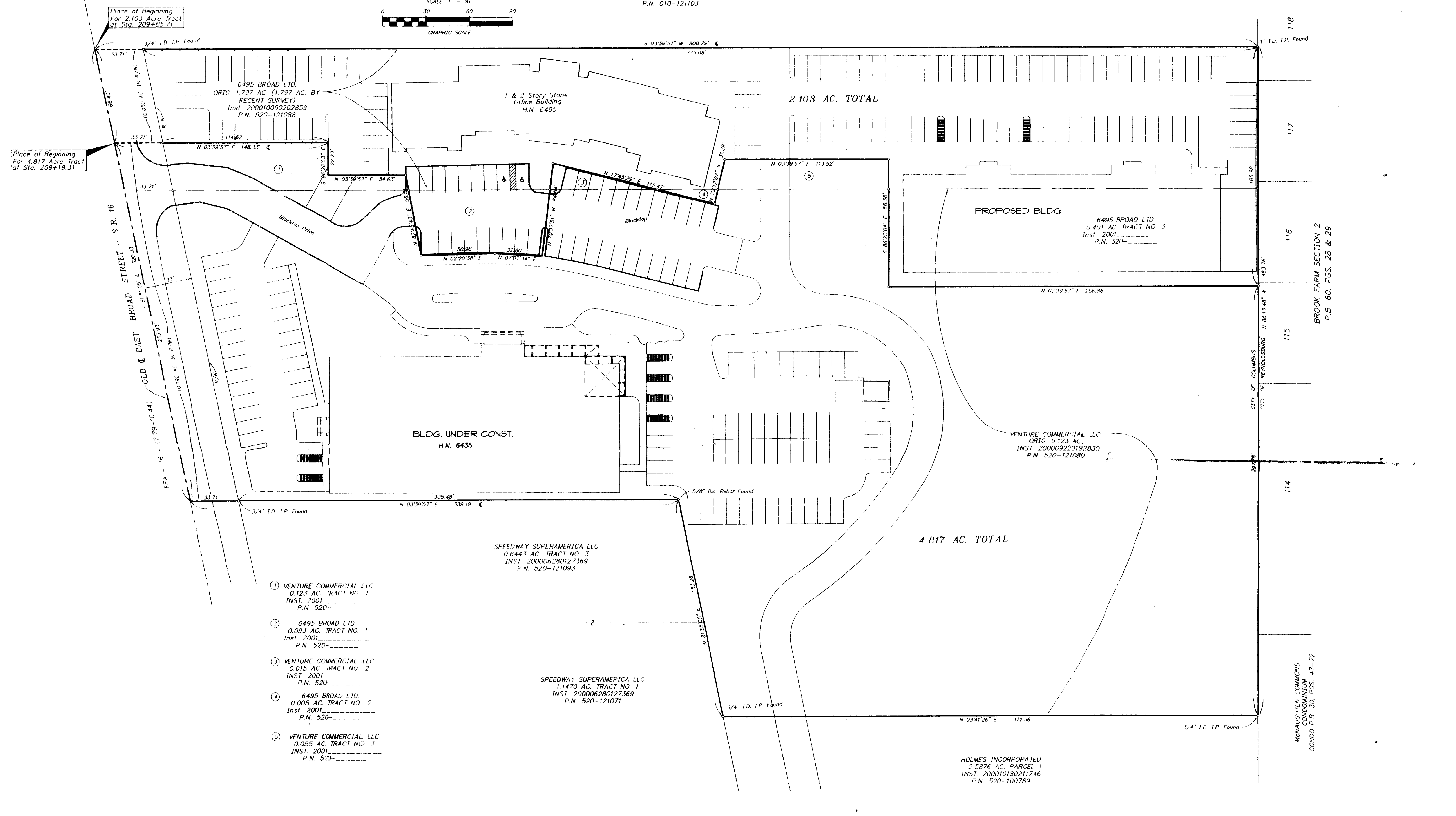


JOSE M. RIVERA  
1.842 AC. PARCEL TWO  
O.R. 31280, PG. D. 18  
P.N. 010-121103



- ① VENTURE COMMERCIAL LLC  
0.123 AC. TRACT NO. 1  
INST. 2001  
P.N. 520
- ② 6495 BROAD LTD  
0.093 AC. TRACT NO. 1  
Inst. 2001  
P.N. 520
- ③ VENTURE COMMERCIAL LLC  
0.015 AC. TRACT NO. 2  
INST. 2001  
P.N. 520
- ④ 6495 BROAD LTD  
0.005 AC. TRACT NO. 2  
Inst. 2001  
P.N. 520
- ⑤ VENTURE COMMERCIAL LLC  
0.055 AC. TRACT NO. 3  
INST. 2001  
P.N. 520

SPEEDWAY SUPERAMERICA LLC  
0.6443 AC. TRACT NO. 3  
INST. 200006280127369  
P.N. 520-121093

SPEEDWAY SUPERAMERICA LLC  
1.1470 AC. TRACT NO. 1  
INST. 200006280127369  
P.N. 520-121071

HOLMES INCORPORATED  
2.5876 AC. PARCEL 1  
INST. 200010180211746  
P.N. 520-100789

BASIS OF BEARINGS: THE CENTERLINE OF EAST BROAD STREET,  
ASSUMED TO BE N 81° 51' 05" E, AND ALL OTHER BEARINGS ARE  
BASED ON THIS MERIDIAN.

— 3/4" I.D. Iron Pipe Set Unless Otherwise Shown

I hereby certify that this plat was prepared from actual  
field surveys performed under my supervision in August  
1994 and in March, 2001. Each 3/4" I.D. iron pipe set  
is marked with a yellow plastic cap imprinted "Bird &  
Bull, Inc."

Ted L. Robinson, Ohio Surveyor No. 5361

**C.F. BIRD & R.J. BULL, INC.**  
ENGINEERS / SURVEYORS  
295 E. MAIN ST., COLUMBUS, OHIO 43215

**VENTURE COMMERCIAL LLC  
& 6495 BROAD LTD.**

COMBINED BOUNDARY SURVEYS  
6435 & 6495 EAST BROAD STREET  
COLUMBUS, OHIO

6.920 AC. IN LOT 18, QTR. TWP. 3, T. 1 N., R. 16 W., U.S.M.L.  
SCALE: 1" = 30'  
DWN: TLR / CKD: R.H. APR. 6, 2001 JOB NO. 00-139

H:\JDBS\Land Projects\2001\139\Map\Misc\Map\01\01.dwg 04/06/01 10:50:08 AM EDT