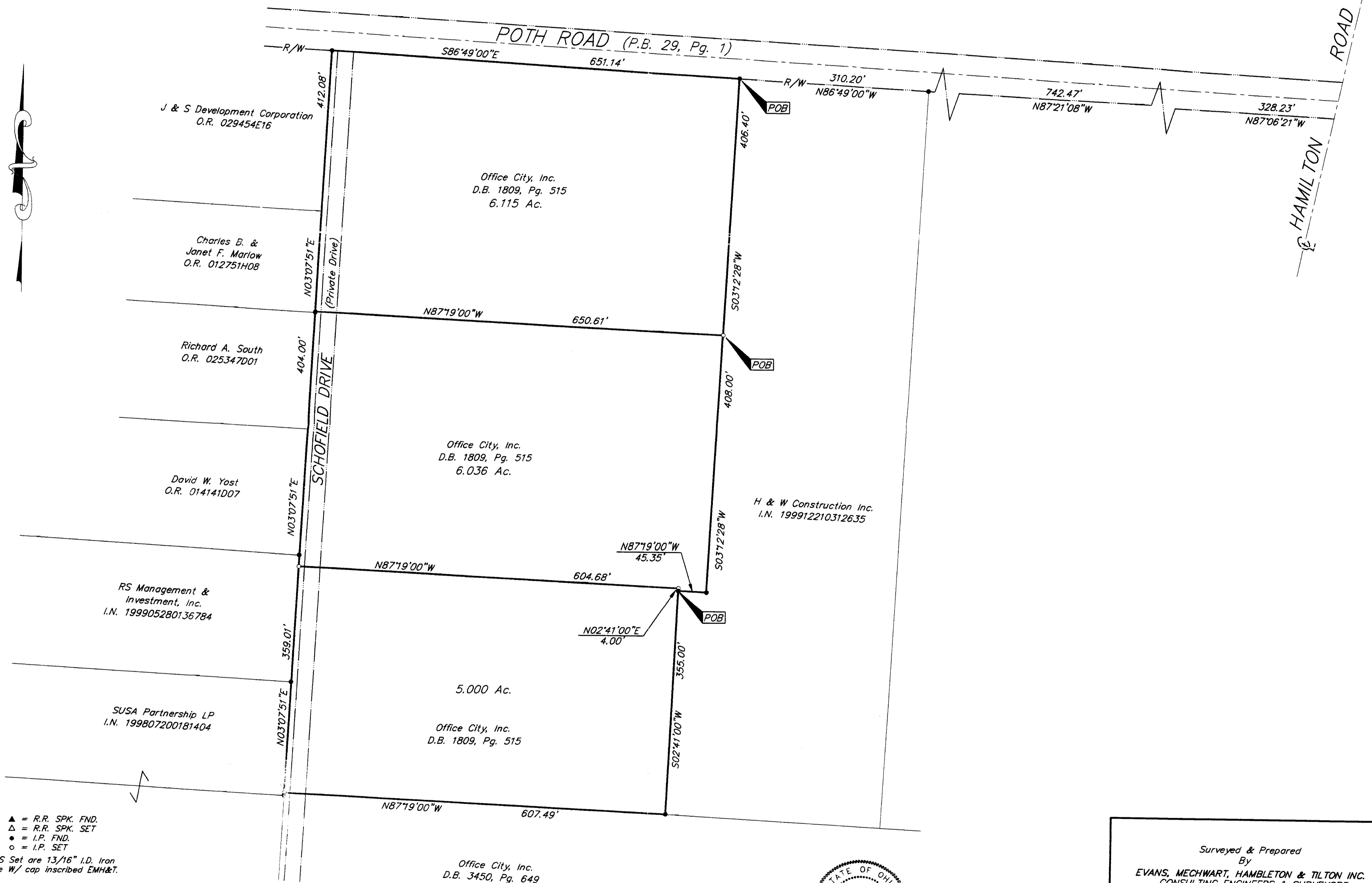
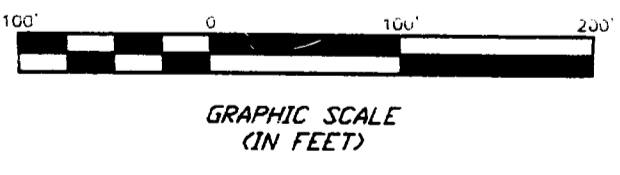


Split

SURVEY OF ACREAGE PARCEL
 HALF SEC 4, TWP 12, RNG 21,
 REFUGEE LANDS
 CITY OF WHITEHALL, FRANKLIN COUNTY, OHIO



▲ = R.R. SPK. FND.
 △ = R.R. SPK. SET
 ● = I.P. FND.
 ○ = I.P. SET
 I.P.S. Set are 1 3/16" I.D. Iron pipe w/ cap inscribed EMH&T.



Bearings are based on the same meridian as the bearings shown on the dedication plat entitled "Dedication of Poth Road" of Record in Plat Book 29, Page 1.



By Matthew A. Kirk
 Professional Surveyor No. 7865

Surveyed & Prepared By
EVANS, MECHWART, HAMBLETON & TILTON INC.
 CONSULTING ENGINEERS & SURVEYORS
 170 MILL STREET
 GAHANNA, OHIO 43230
 614/471-5150

SCALE: 1" = 100'
 REVISED

FEBRUARY 22, 2000
 MARCH 17, 2000

TRIP
 0-101-0
 870-9352