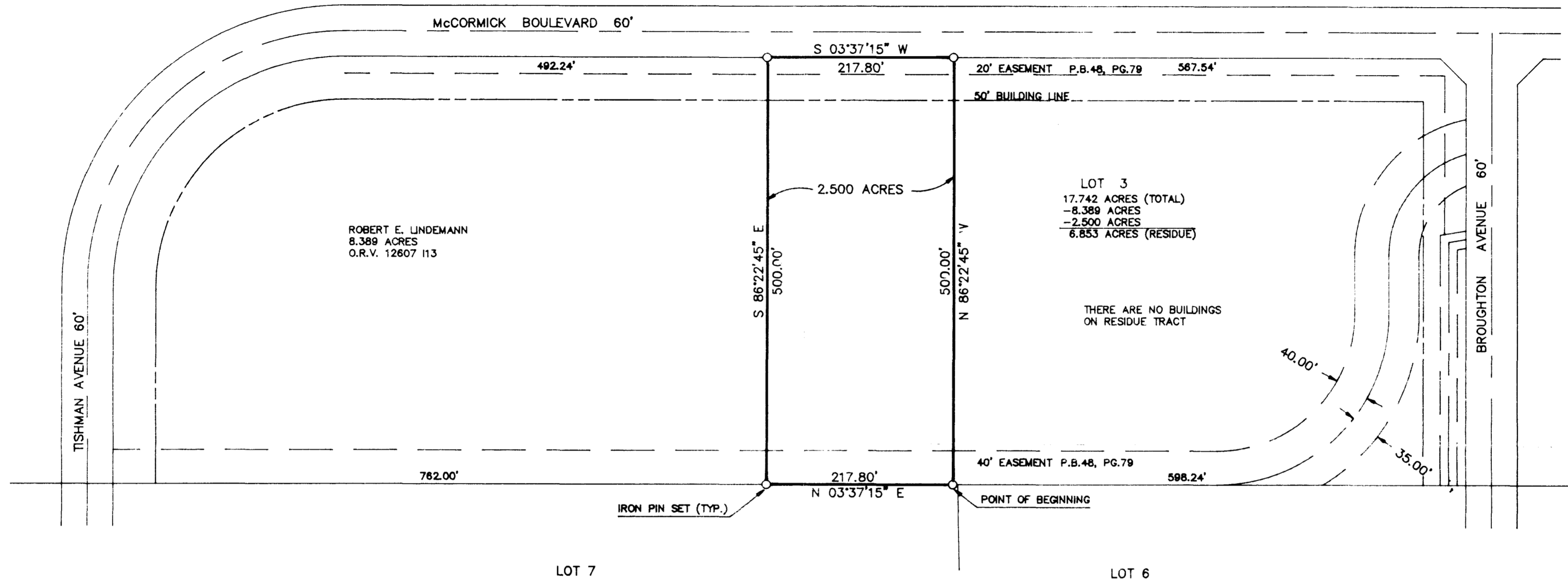


# PLAT OF 2.500 ACRE SURVEY

SITUATED IN THE STATE OF OHIO, COUNTY OF FRANKLIN, CITY OF COLUMBUS, SECTION 3, TOWNSHIP 1, RANGE 16, UNITED STATES MILITARY LANDS, BEING 2.500 ACRES OF LAND ALL OUT OF LOT 3, AS DESIGNATED AND DELINEATED ON THE PLAT "COLUMBUS INDUSTRIAL PARK", OF RECORD IN PLAT BOOK 48, PAGES 79 AND 80, RECORDER'S OFFICE, FRANKLIN COUNTY, OHIO.



ROBERT E. UNDEMANN  
8.389 ACRES  
O.R.V. 12607 113

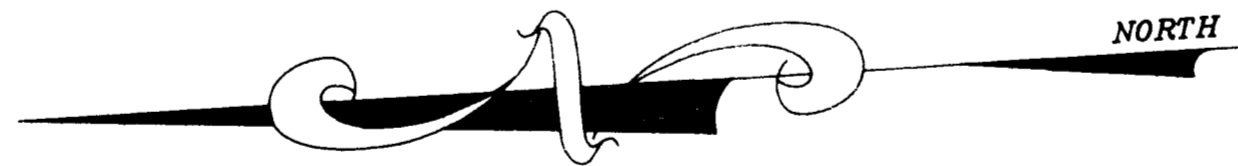
LOT 3  
17.742 ACRES (TOTAL)  
- 8.389 ACRES  
- 2.500 ACRES  
6.853 ACRES (RESIDUE)

THERE ARE NO BUILDINGS  
ON RESIDUE TRACT

LOT 7

LOT 6

OUTERBELT EAST COMMERCE PARK  
PLAT BOOK 45, PAGE 4



THE BEARING REFERENCE FOR THIS PLAT IS THE SAME AS DELINEATED ON THE PLAT "COLUMBUS INDUSTRIAL PARK" OF RECORD IN PLAT BOOK 48, PAGES 79 AND 80, RECORDER'S OFFICE, FRANKLIN COUNTY, OHIO.

WE HEREBY CERTIFY THAT THE FOREGOING PLAT HAS BEEN PREPARED FROM AN ACTUAL FIELD SURVEY OF THE PREMISES AND RECORDS IN THE RECORDER'S OFFICE, FRANKLIN COUNTY, OHIO.

HOCKADEN AND ASSOCIATES, INC.  
CONSULTING ENGINEERS  
883 N. CASSADY AVENUE  
COLUMBUS, OHIO 43219  
(614)-252-0993

GRAPHIC SCALE



( IN FEET )  
1 inch = 100 ft.

JOHN L. PRICE  
REGISTERED SURVEYOR NO. 7159

DATE