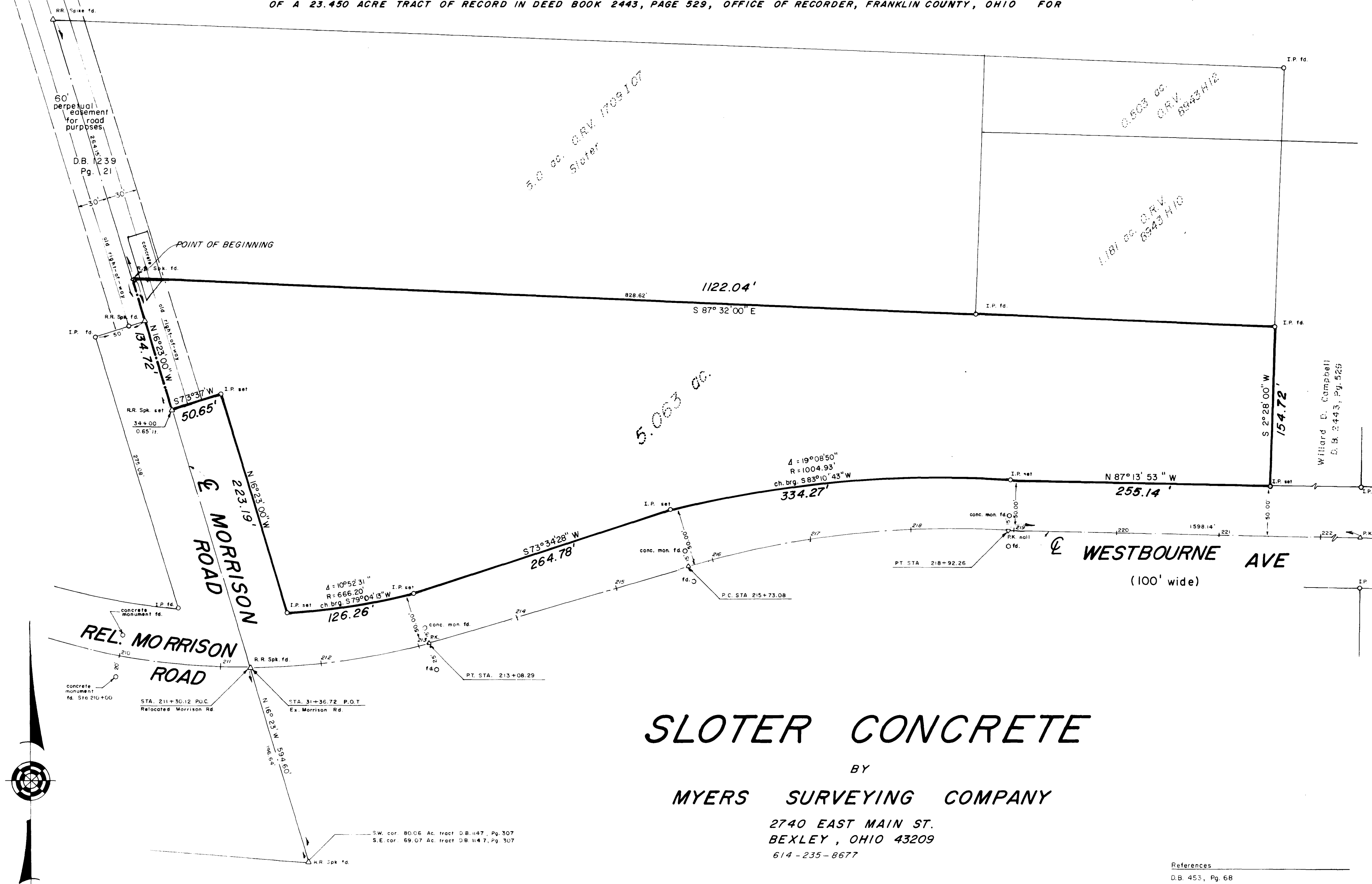


SURVEY OF 5.063 ACRES SITUATED IN THE STATE OF OHIO, COUNTY OF FRANKLIN, CITY OF COLUMBUS, QTR. TWP. 3, TOWNSHIP 1, RANGE 16, UNITED STATES MILITARY LANDS AND BEING PART OF A 23.450 ACRE TRACT OF RECORD IN DEED BOOK 2443, PAGE 529, OFFICE OF RECORDER, FRANKLIN COUNTY, OHIO FOR



SLOTTER CONCRETE

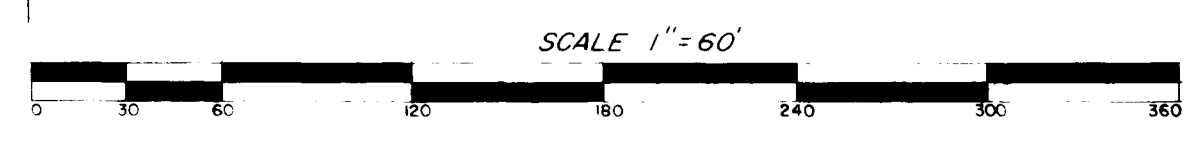
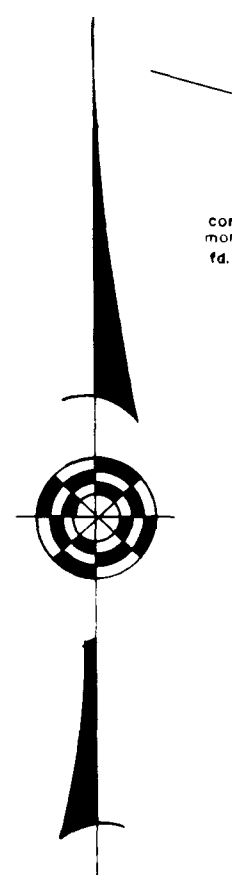
BY
MYERS SURVEYING COMPANY

2740 EAST MAIN ST.
 BEXLEY, OHIO 43209
 614-235-8677

We hereby certify that the foregoing plat is a true return of an actual survey of the premises during October, 1987 and is correct to the best of our knowledge and belief. Iron pins set are 30" x 1" with orange plastic caps inscribed "P.S. 6579". The basis of bearings for the foregoing plat is from O.R.V. 1709107 - the centerline of Morrison Rd. held as North 16 degrees 23 minutes West.

Albert Myers
 PROFESSIONAL SURVEYOR 6579

- References
- D.B. 453, Pg. 68
 - D.B. 1147, Pg. 307
 - D.B. 2443, Pg. 529
 - D.B. 3347, Pg. 371
 - D.B. 874, Pg. 73
 - O.R.V. 1709107
 - O.D.O.T. Highway plans FRA-270-30.32 N Franklin Co. Engineer's Plat of Morrison Road dated 5-26-37
 - D.B. 1239, Pg. 21
 - D.B. 3364, Pg. 277



OCTOBER 25, 1987