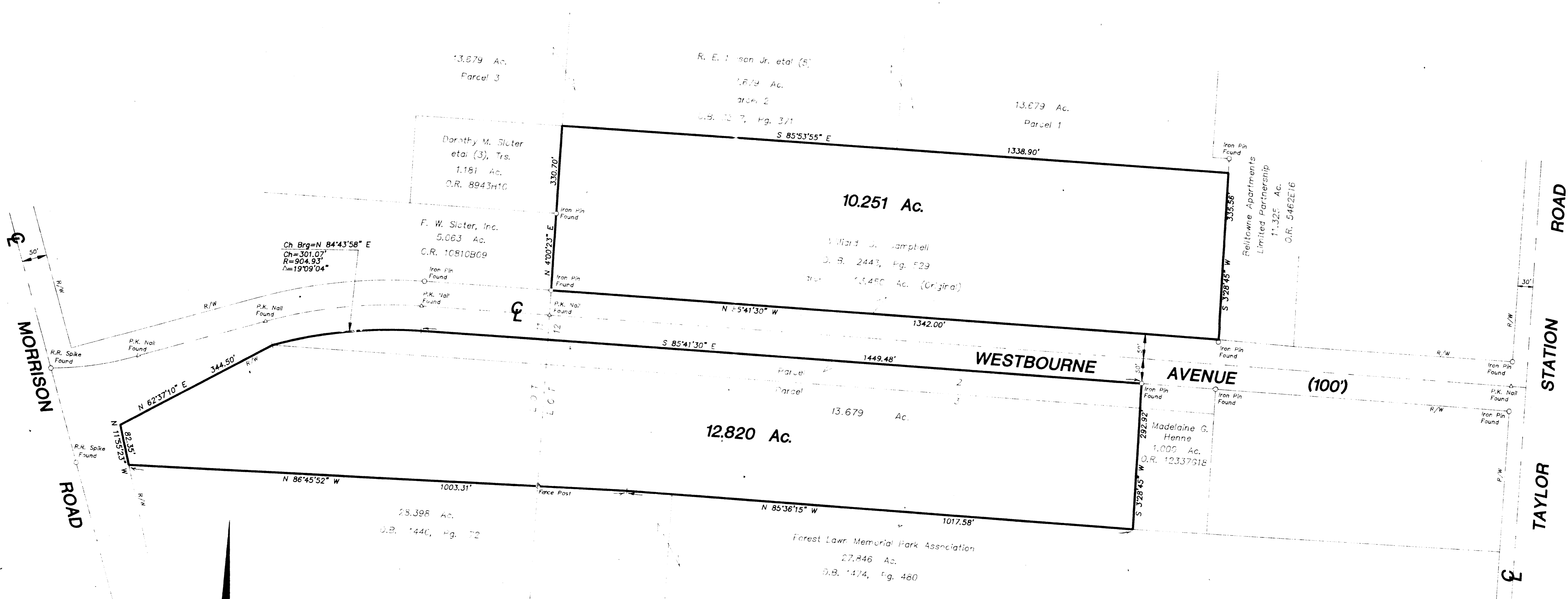


SURVEY OF ACREAGE PARCEL
 LOCATED IN LOTS 11 & 12, QUARTER TOWNSHIP 3, TOWNSHIP 1, RANGE 16
 UNITED STATES MILITARY LANDS
 CITY OF COLUMBUS, FRANKLIN COUNTY, OHIO



Ch Brg=N 84°43'58" E
 Ch=301.07'
 R=904.93'
 Δ=19°09'04"

Surveyed & Plotted
 By
EVANS, MECHWART, HAMBLETON, & TILTON INC.
 CONSULTING ENGINEERS AND SURVEYORS
 170 MILL STREET
 GAHANNA, OHIO 43230
 614/471-5150

NOTE:
 The bearings shown hereon are based on the same
 meridian as the Ohio Department of Transportation
 Plan No. FRA-270-30.32N.

By *Thomas D. Sibbald*
 Thomas D. Sibbald
 Registered Surveyor No. 5908
 SCALE 1" = 100' AUGUST 3, 1992
 100' 80' 60' 40' 20' 0'
 GRAPHIC SCALE 1" = 100'

