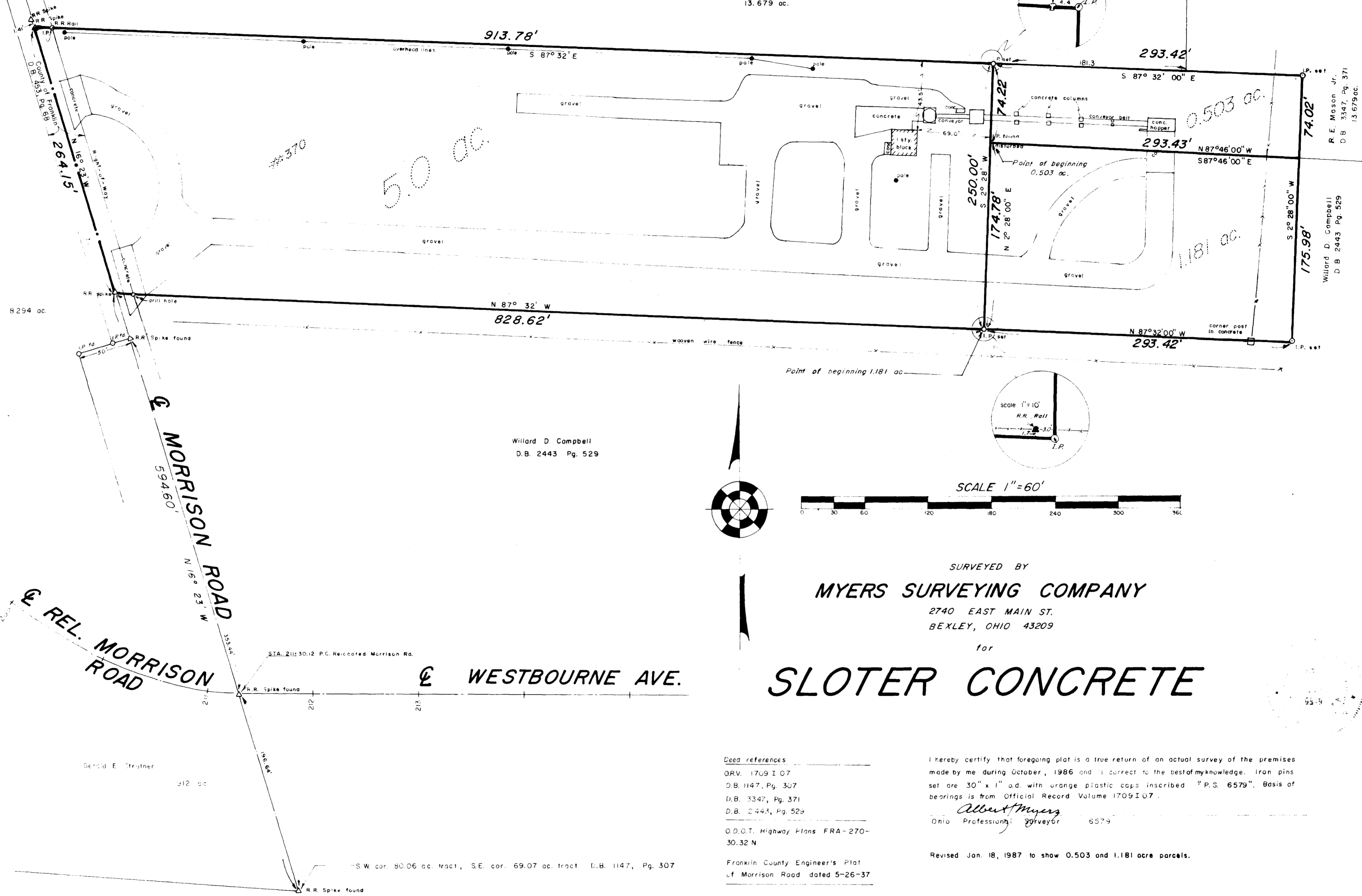
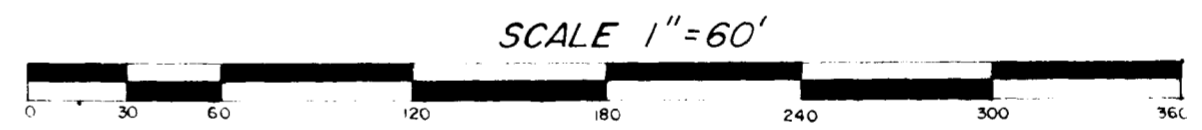


SURVEY OF 5.0 ACRE PARCEL SITUATED IN THE STATE OF OHIO, COUNTY OF FRANKLIN, CITY OF COLUMBUS, QTR. TWP. 3, TWP. 1, RANGE 16, UNITED STATES MILITARY LANDS AND BEING PART OF AN 80.06 ACRE TRACT OF RECORD IN DEED BOOK 1147, PAGE 307 AND 1.181 ACRES (D.B. 2443, PG. 529) AND 0.503 ACRE (D.B. 3347, PG. 371)

R.E. Mason, Jr. from Daniel E. Edwards
 D.B. 3347 Pg. 371
 13.679 ac.



Willard D Campbell
 D.B. 2443 Pg. 529



SURVEYED BY
MYERS SURVEYING COMPANY
 2740 EAST MAIN ST.
 BEXLEY, OHIO 43209

for
SLOTTER CONCRETE

Deed references
 ORV. 1709 I 07
 D.B. 1147, Pg. 307
 D.B. 3347, Pg. 371
 D.B. 2443, Pg. 529
 O.D.O.T. Highway Plans FRA-270-30.32 N

I hereby certify that foregoing plat is a true return of an actual survey of the premises made by me during October, 1986 and is correct to the best of my knowledge. Iron pins set are 30" x 1" od. with orange plastic caps inscribed "P.S. 6579". Basis of bearings is from Official Record Volume 1709 I 07.

Albert Myers
 Ohio Professional Surveyor 6579

Revised Jan. 18, 1987 to show 0.503 and 1.181 acre parcels.

Franklin County Engineer's Plat
 of Morrison Road dated 5-26-37

drawn by J.L.W.