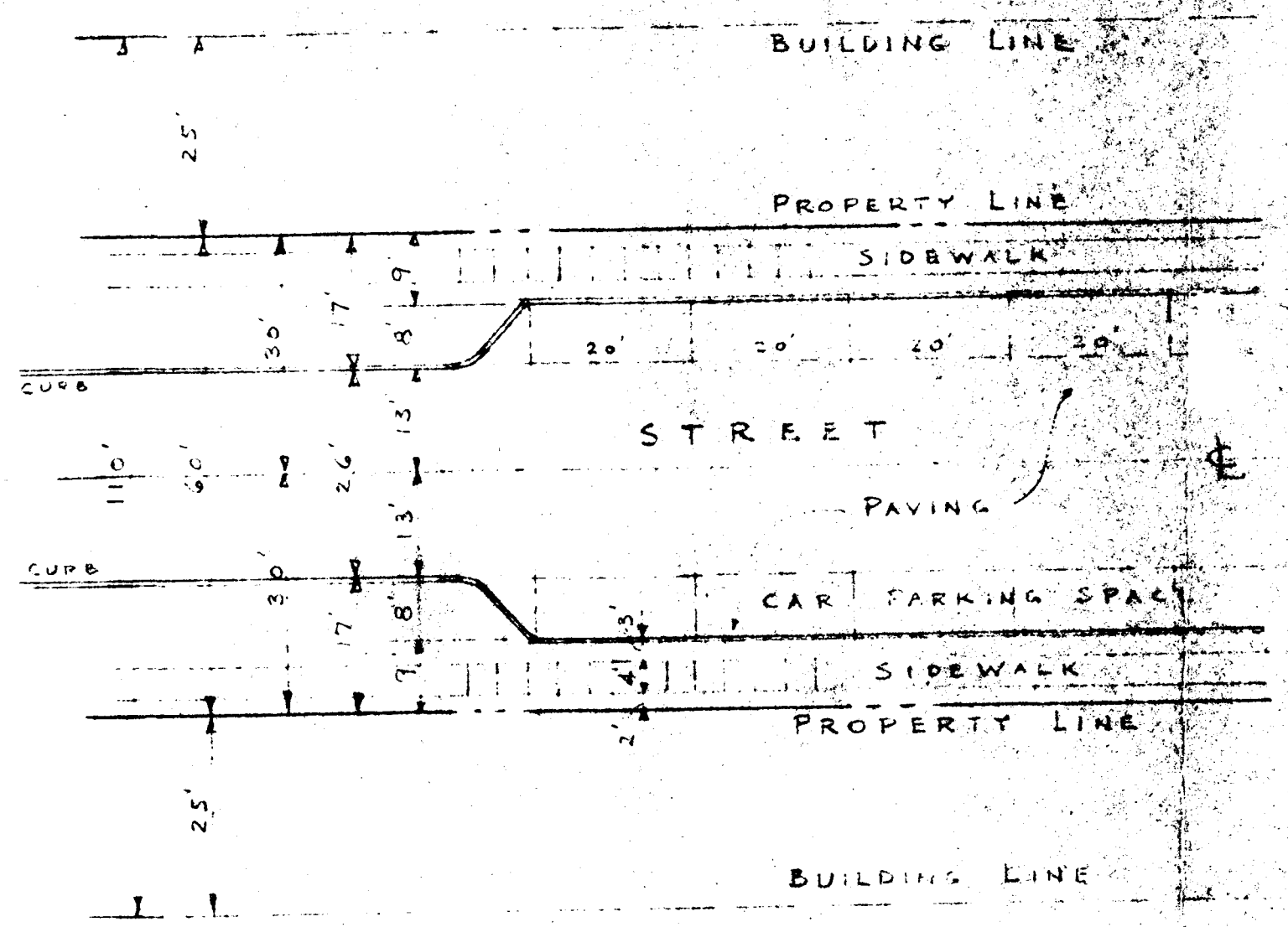
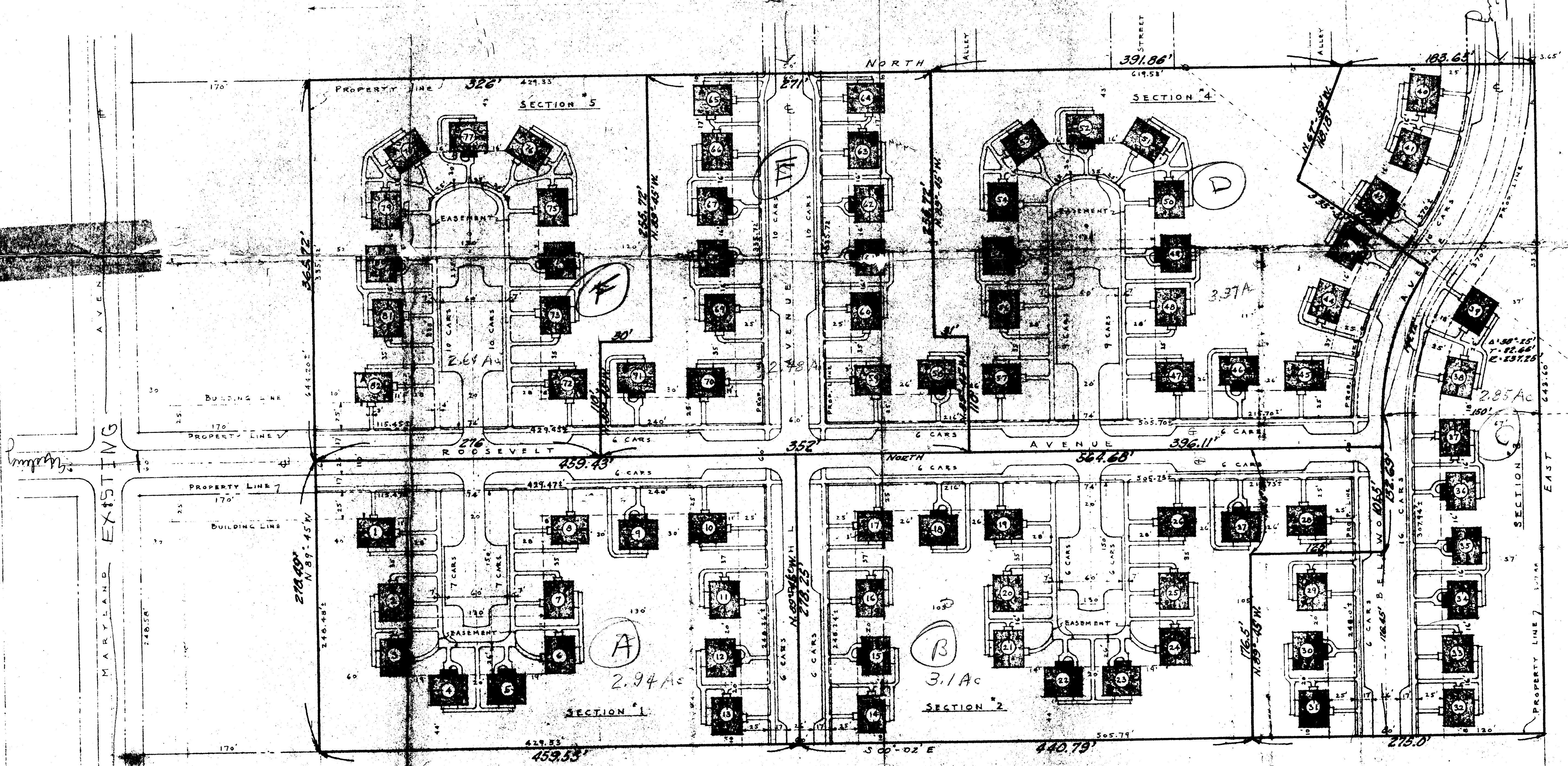


GROSS AREA OF HOUSING SITE 756,050 - 17.35 ACRES  
 AREA OF DEDICATED STREETS (60' R/W) 135,490 - 3.11 AC.  
 DEDUCT 135,490 - 3.11 ACRES  
 AREA OF LAND FOR HOUSING PROJECT (WITHIN NEW PROPERTY LINES - MORTGAGABLE PROP.) 620,560 - 14.24 ACRES  
 COVERAGE OF BUILDINGS 84,420 sq. ft. 13.6%  
 DENSITY - FAMILIES PER ACRE 11.51  
 NO. OF BUILDINGS (2 STORY) { HOUSE A - 54 (66%) } 82  
 { HOUSE B - 28 (34%) }  
 NO. OF DWELLING UNITS (2 PER BLDG.) 164  
 NO. OF ROOMS (5 PER DWELLING UNIT) 820  
 LAND AREA PER DWELLING UNIT 3,780'  
 NO. OF PARKING SPACES 164 - 100%



TYPICAL STREET PLAN  
SCALE 1" = 20'



REVISED

86-N

Nov. 16/44

House 28' x 36'  
 PLOT PLAN  
 GARDEN HOUSING PROJECT  
 FOR THE EAST BROAD-MARYLAND CORPORATION  
 COLUMBUS, OHIO  
 SCALE 1" = 80'

BLD	UNITS	ACRES
A = 13	= 26	= 2.94 Ac
B = 15	= 30	= 3.10 Ac
C = 14	= 28	= 2.85 Ac
D = 15	= 30	= 3.37 Ac
E = 14	= 28	= 2.48 Ac
F = 11	= 22	= 2.61 Ac
<b>42</b>	<b>164</b>	<b>17.35 Ac</b>

ARTHUR P. DAVIS ARCHITECT  
 1726 M STREET, N.W.  
 WASHINGTON, D.C.