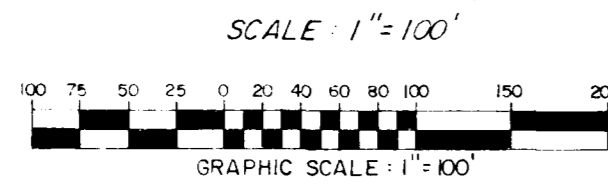


BY
EVANS, MECHWART, HAMBLETON & TILTON, INC.
CONSULTING ENGINEERS AND SURVEYORS
GAHANNA, OHIO

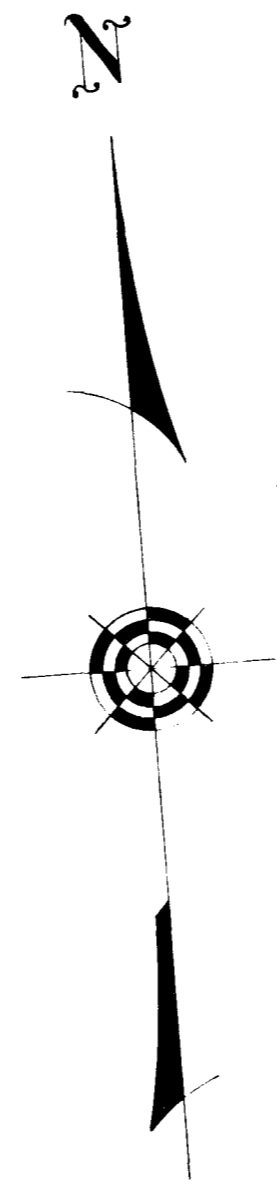
By *James R. Hill*
Professional Surveyor No. 6919



SCALE 1"=100'
IRON PIN
OCTOBER 19, 1990

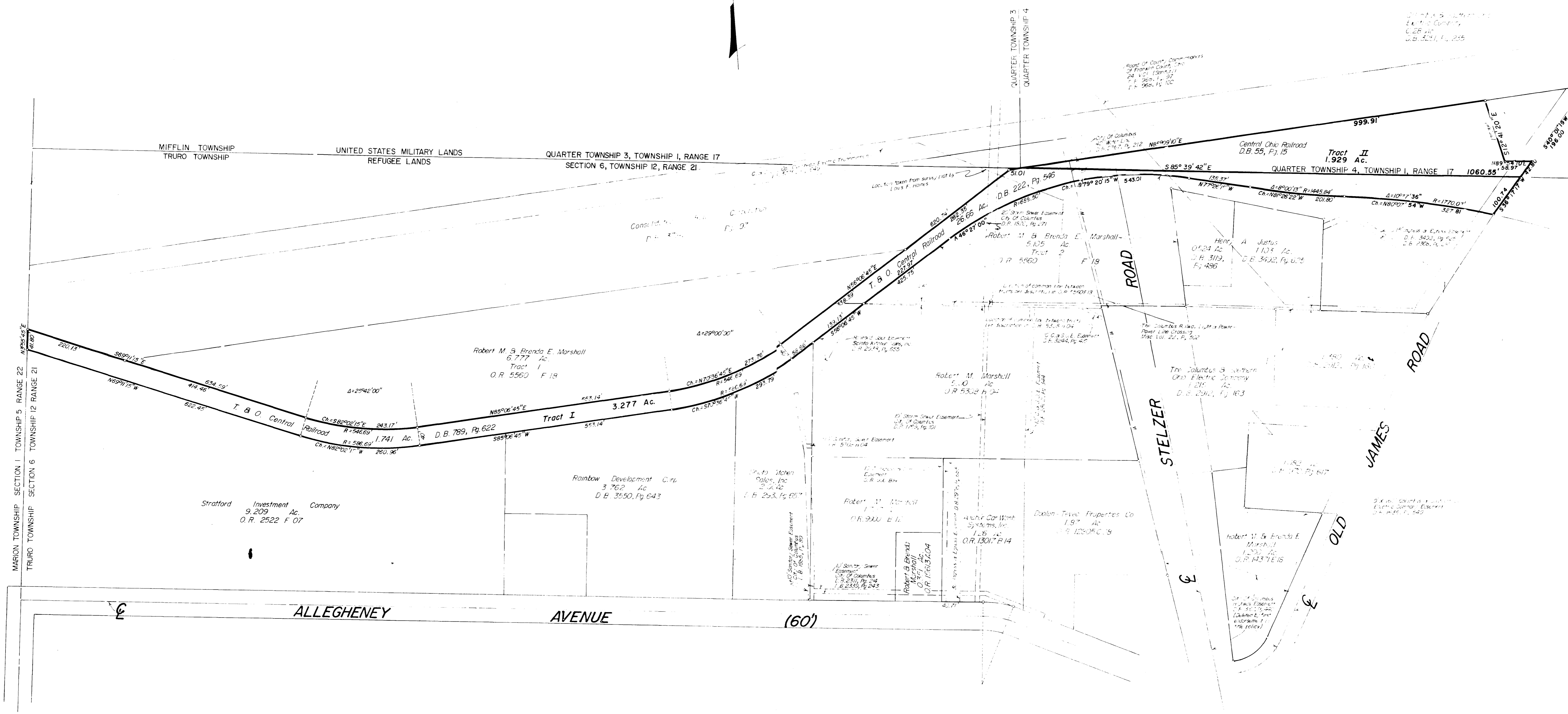
This plot was prepared from an actual survey of the premises and shows the location of the boundaries.

The bearings are based on the meridian in a bearing system in which the north line of the 6.777 acre tract has a bearing of North 89°29'10" East as per O.R. 5560 F18.



SURVEY OF ACREAGE PARCELS Located In Section 6, Township 12, Range 21 Refugee Lands & Quarter Township 4, Township 1, Range 17 United States Military Lands City Of Columbus, Franklin County, Ohio

The following easements do not apply to subject property:
City of Columbus I.B. 1670, Pg. 105
C.B. S.O.E. Co. I.B. 1773, Pg. 75
The Ohio Fuel Gas Co. I.B. 1773, Pg. 75
City of Columbus I.B. 1773, Pg. 75
City of Columbus D.B. 766, Pg. 255



City of Columbus
Franklin County
O.R. 5560
D.B. 5211, Pg. 255

City of Columbus
Franklin County
O.R. 5560
D.B. 5211, Pg. 255

City of Columbus
Franklin County
O.R. 5560
D.B. 5211, Pg. 255

City of Columbus
Franklin County
O.R. 5560
D.B. 5211, Pg. 255

City of Columbus
Franklin County
O.R. 5560
D.B. 5211, Pg. 255

City of Columbus
Franklin County
O.R. 5560
D.B. 5211, Pg. 255