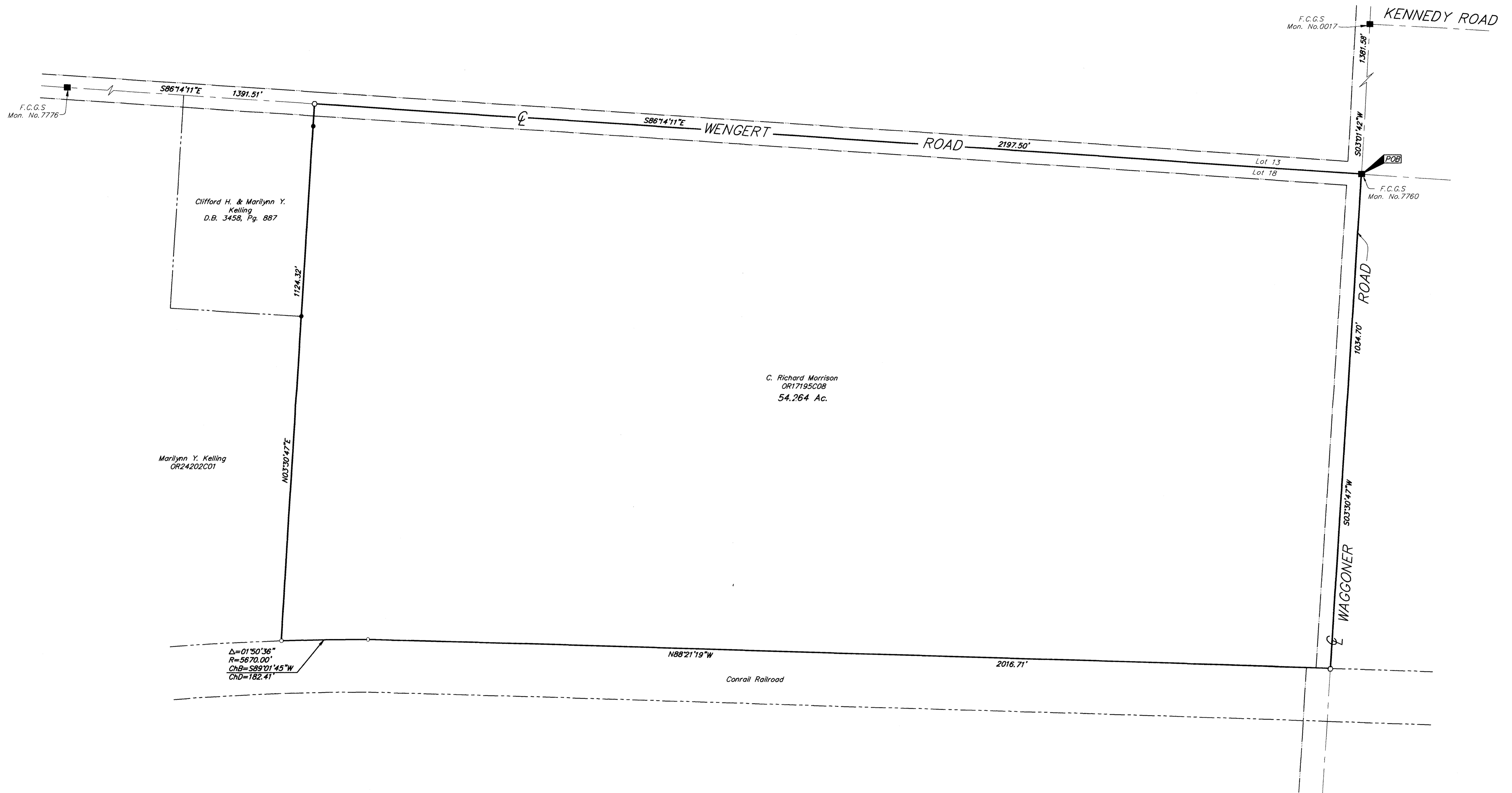


SURVEY OF ACREAGE PARCEL
 LOT 18, QTR. TWP. 4, TWP. 1, RNG. 16
 UNITED STATES MILITARY LANDS
 TOWNSHIP OF JEFFERSON, FRANKLIN COUNTY, OHIO



C. Richard Morrison
 OR17195C08
 54.264 Ac.

Clifford H. & Marilyn Y. Kelling
 D.B. 3458, Pg. 887

Marilynn Y. Kelling
 OR24202C01

$\Delta=01^{\circ}50'36''$
 $R=5670.00'$
 $ChB=S89^{\circ}01'45''W$
 $ChD=182.41'$

- = MON. FND.
- = I.P. FND.
- = I.P. SET
- = MAG. NAIL FND.
- = MAG. NAIL SET
- ▲ = R.R. SPK. FND.
- △ = R.R. SPK. SET
- = P.K. NAIL FND.

I.P.S. Set are 1 3/16" I.D. Iron pipe w/ cap inscribed EMH&T.



BASIS OF BEARINGS: Bearings are based on the Ohio State Plane Coordinate System as per NAD83. Control for bearings was from coordinates of monuments 7760 & 7776, having a bearing of South 86°14'11" East, between said Monuments, established by the Franklin County Engineering Department, using Global Positioning System procedures and equipment.

SURVEYED & PREPARED BY
EMT INC.
 CONSULTING ENGINEERS & SURVEYORS
 170 MILL STREET
 GAHANNA, OHIO 43230
 (614) 471-5150



By *Matthew A. Kirk* SWEED
 Professional Surveyor No. 7865

SCALE: 1" = 100'

JUNE 5, 2000