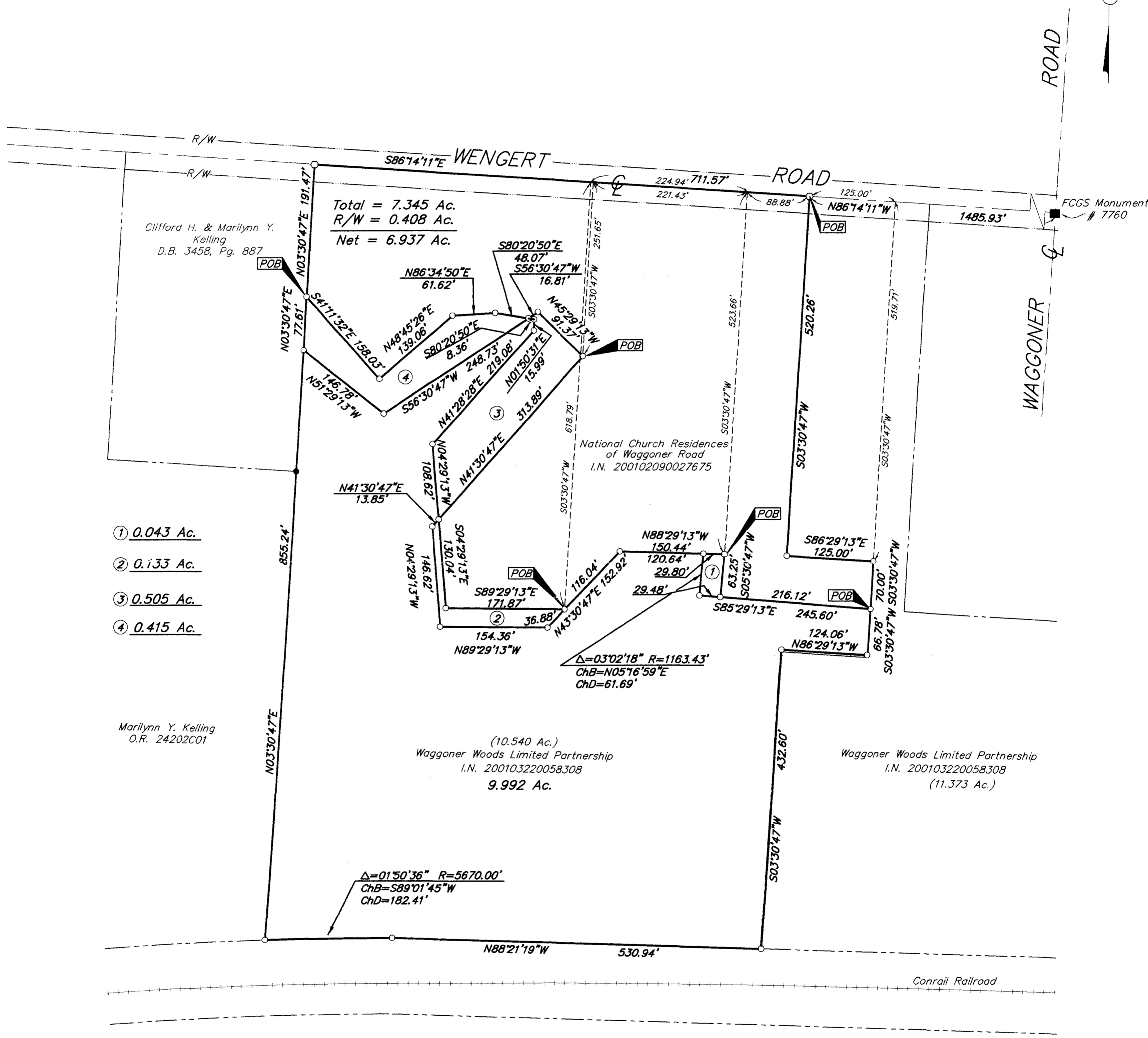


SURVEY OF ACREAGE PARCELS

LOT 18, QTR. TWP. 4, TWP. 1, RNG. 16

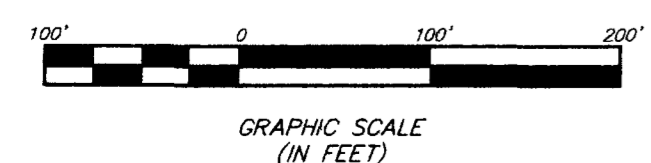
UNITED STATES MILITARY LANDS

CITY OF COLUMBUS, FRANKLIN COUNTY, OHIO



Q:\PROJECT\20011140.01\DWG\11140b/v1.DWG - 0 XREFS: - PLOTTED BY DGOODMAN - November 15, 2001 - 2:28 PM

- = MON. FND.
 - = I.P. FND.
 - = I.P. SET
 - = MAG. NAIL FND.
 - = MAG. NAIL SET
 - ▲ = R.R. SPK. FND.
 - △ = R.R. SPK. SET
 - = P.K. NAIL FND.
- I.P.S. Set are 13/16" I.D. Iron pipe W/ cap inscribed EMH&T.



BASIS OF BEARINGS: Bearings are based on the Ohio State Plane Coordinate System as per NAD83. Control for bearings was from coordinates of monument numbers 7760 & 7776, having a bearing of South 86°14'11" East, between said Monuments, established by the Franklin County Engineering Department.



By Matthew A. Kirk
Professional Surveyor No. 7865

Surveyed & Prepared
By
EVANS, MECHWART, HAMBLETON & TILTON INC.
CONSULTING ENGINEERS & SURVEYORS
170 MILL STREET
GAHANNA, OHIO 43230
614/471-5150

SCALE: 1" = 100'
REVISED:
NOVEMBER 15, 2001
NOVEMBER 21, 2001