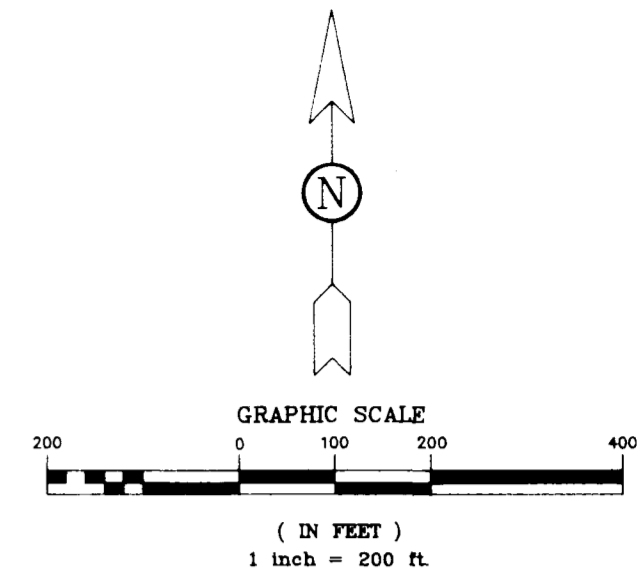
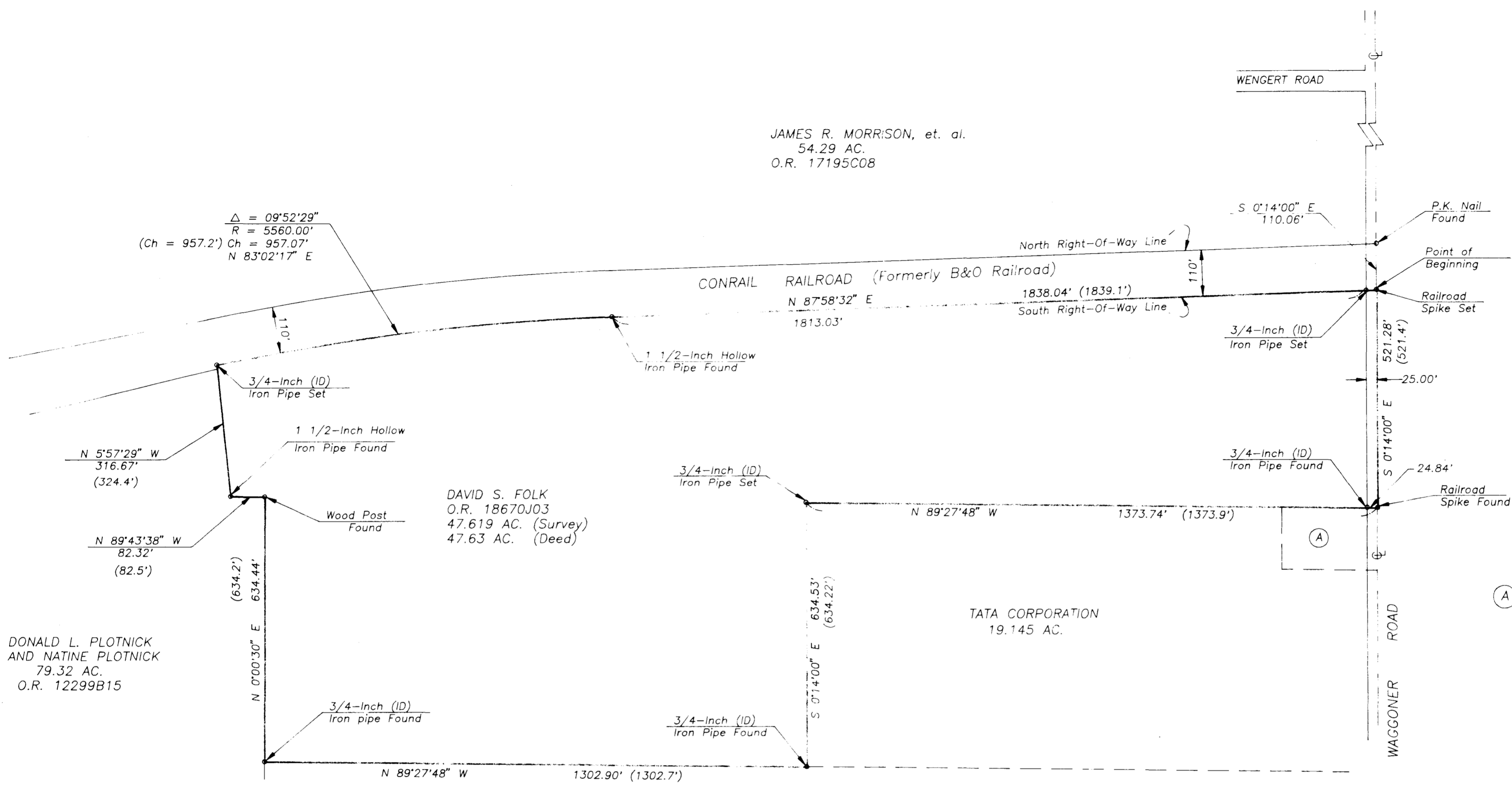


JAMES R. MORRISON, et. al.
54.29 AC.
O.R. 17195C08



$\Delta = 09^{\circ}52'29''$
 $R = 5560.00'$
(Ch = 957.2') Ch = 957.07'
N 83^{\circ}02'17'' E



DAVID S. FOLK
O.R. 18670J03
47.619 AC. (Survey)
47.63 AC. (Deed)

DONALD L. PLOTNICK
AND NATINE PLOTNICK
79.32 AC.
O.R. 12299B15

TATA CORPORATION
19.145 AC.

(A) ROBERT E. SHANNON
0.855 AC.
O.R. 29969F11

CRAWFORD FARMS
385.053 AC. (Original)
D.B. 3605, P. 440

LEGEND
() Deed Distance

Situated in the State of Ohio, County of Franklin, Township of Jefferson, being in Lots 18 and 19, of Quarter Township 4, Township 1, Range 16, United States Military Lands, and being all of that tract of land (47.619 acres of land, more or less, according to a survey conducted by Bauer, Davidson & Merchant, Inc.) described in the deed to David S. Folk of record in Official Record 18670J03, Recorder's Office, Franklin County, Ohio.

We hereby state that the foregoing map was prepared from information obtained from an actual field survey conducted by Bauer, Davidson & Merchant, Inc. in January of 1997.

All of the survey markers noted on this map were in place in January of 1997.

The bearings shown on this map are based on the bearing of S 0°14'00" E for the centerline of Waggoner Road, as shown in said deed to David S. Folk, of record in Official Record 18670J03, Recorder's Office, Franklin County, Ohio.

ORDER NO. 4090-96
JANUARY 14, 1997
SCALE 1"=200'

BAUER, DAVIDSON & MERCHANT, INC.
Consulting Engineers
By *Jimmie L. Davis*
Jimmie L. Davis
Professional Surveyor No. 6942

BAUER, DAVIDSON & MERCHANT, INC.
Consulting Engineers
255 Green Meadows Drive S.
P.O. Box 370
Powell, Ohio 43065
(614) 846-3393

BOUNDARY SURVEY MAP OF 47.619 ACRES OF LAND LOCATED WEST OF WAGGONER ROAD AND SOUTH OF WENGERT ROAD, IN THE TOWNSHIP OF JEFFERSON, COUNTY OF FRANKLIN, STATE OF OHIO