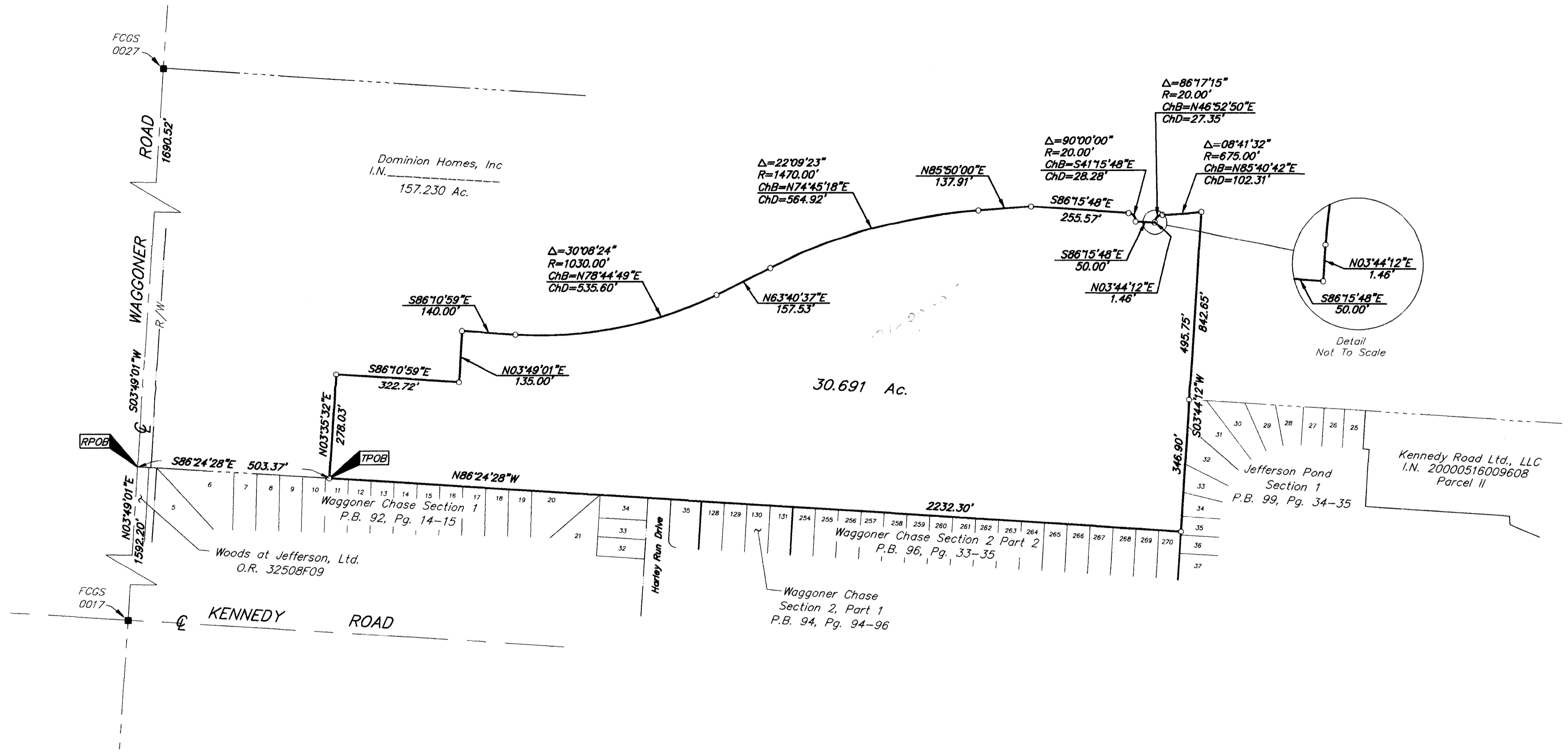


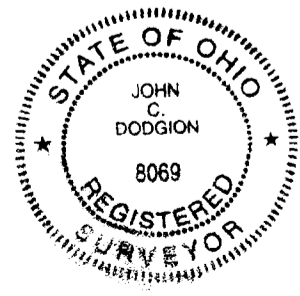
SURVEY OF ACREAGE PARCEL
QUARTER TOWNSHIP 4, TOWNSHIP 1, RANGE 16
UNITED STATES MILITARY LANDS
TOWNSHIP OF JEFFEERSON, FRANKLIN COUNTY, OHIO



- = MON. FND.
 - = I.P. FND.
 - = I.P. SET
 - = MAG. NAIL FND.
 - = MAG. NAIL SET
 - ▲ = R.R. SPK. FND.
 - △ = R.R. SPK. SET
 - = P.K. NAIL FND.
- I.P.S Set are 13/16" I.D. Iron pipe W/ cap inscribed EMHT INC.



BASIS OF BEARINGS: Bearings are based on the same bearing system as "Brooksedge Section 1" of record in Plat Book 15, Page 236 & 237, Recorder's Office, Licking County, Ohio.



By *John C. Dodgion*
 Professional Surveyor No. 8069

Surveyed & Prepared
 By
EVANS, MECHWART, HAMBLETON & TILTON INC.
 CONSULTING ENGINEERS & SURVEYORS
 170 MILL STREET
 GAHANNA, OHIO 43230
 614/471-5150

SCALE: 1" = 200' AUGUST 22, 2001

G:\PROJECT\20021272\DWG\212722bv.DWG - 0 XREFS - PLOTTED BY JBUSHBY - August 22, 2002 - 3:51 PM