

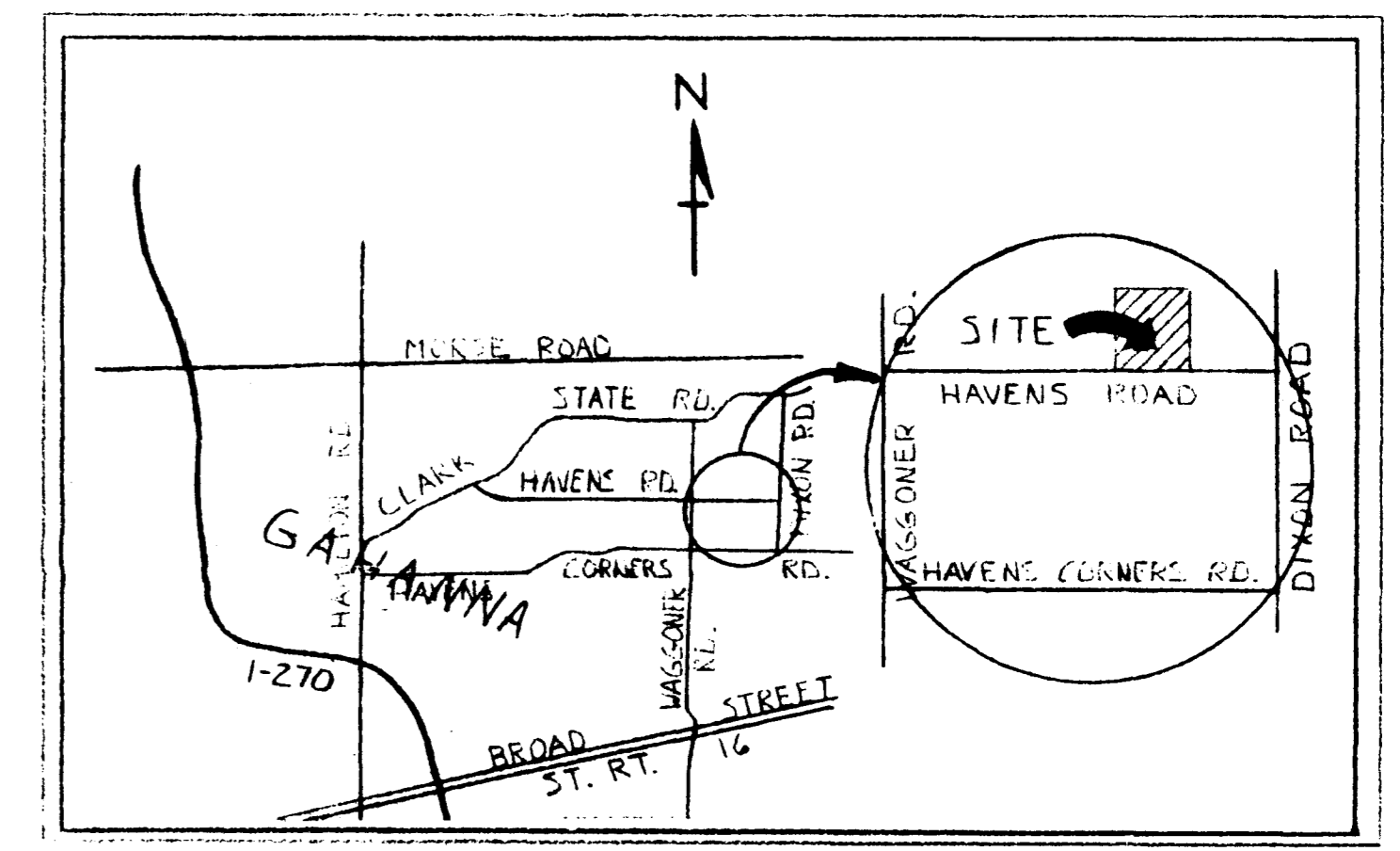
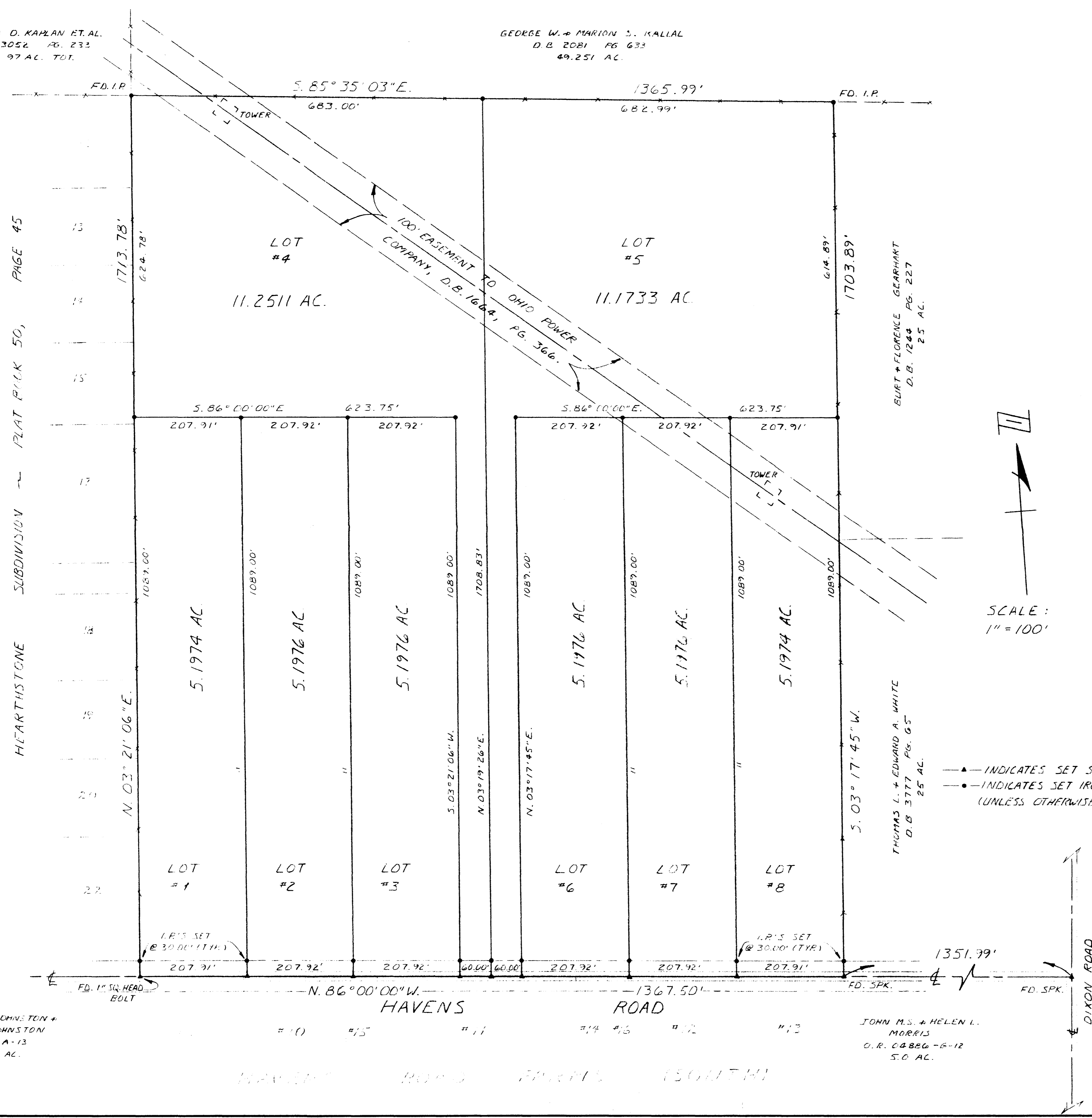
HAVENS ROAD FARMS (NORTH)

RHEA D. KAPLAN ET AL.
D.B. 3052 PG. 232
97 AC. TOT.

GEORGE W. & MARION S. KALLAL
D.B. 2081 PG. 633
49.251 AC.

A Survey of
53.6096 Acres
for
Countrytyme Realty, Inc.

HEARTHSTONE SUBDIVISION - PLAT P.L.K. 50, PAGE 45



VICINITY MAP
NO SCALE

BEING THE WEST HALF OF LOT 5, SECTION 1,
TOWNSHIP 1, RANGE 16, UNITED STATES MILITARY
LANDS, JEFFERSON TOWNSHIP, FRANKLIN COUNTY,
OHIO, CONTAINING 53.6096 ACRES AND BEING
THOSE SAME PREMISES DESCRIBED IN O.R. 03827-G-12.
PREMISES ALSO SUBJECT TO EASEMENT (ALONG HAVENS ROAD)
TO OHIO TELEPHONE & TELEGRAPH CO., D.B. 922, PG. 365.

THIS DRAWING WAS PREPARED FROM AN ACTUAL FIELD SURVEY
MADE BY PAUL K. MOORE & ASSOCIATES ON April 4, 1986
AND REPRESENTS THE PREMISES AS SHOWN HEREON TO THE BEST
OF OUR KNOWLEDGE.

SIGNED AT REYNOLDSBURG, OHIO THIS 8 DAY OF April 1986.

Paul K. Moore
PAUL K. MOORE, REGISTERED SURVEYOR NO. 5883

JANE C. JOHNSTON &
JOHN D. JOHNSTON
C.R. 9795-A-13
21.788 AC.

JOHN M.S. & HELEN L.
MORRIS
O.R. 04826-G-12
5.0 AC.

TOLERANCES (EXCEPT AS NOTED)	REVISIONS			DRAWN BY	SCALE	MATERIAL
	NO.	DATE	BY			
DECIMAL	1			VPL	1"=100'	REYNOLDSBURG OHIO 43068
FRACTIONAL	2					
	3					
ANGULAR	4					
	5			CHK'D	DATE	DRAWING NO.
	6			PKM	4-8-86	
				TRACED	APP'D	