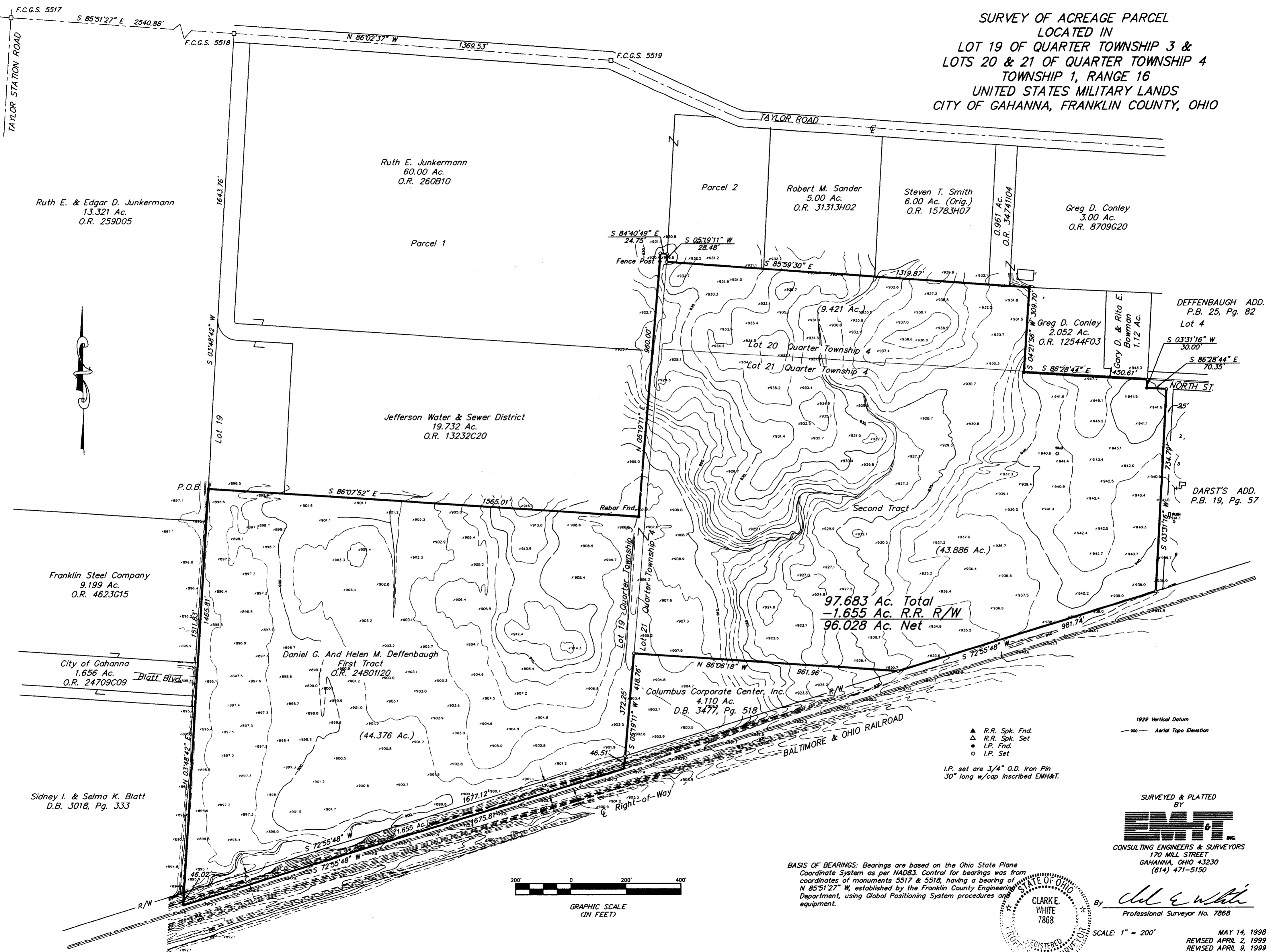


**SURVEY OF ACREAGE PARCEL
LOCATED IN
LOT 19 OF QUARTER TOWNSHIP 3 &
LOTS 20 & 21 OF QUARTER TOWNSHIP 4
TOWNSHIP 1, RANGE 16
UNITED STATES MILITARY LANDS
CITY OF GAHANNA, FRANKLIN COUNTY, OHIO**



Ruth E. & Edgar D. Junkermann
13.321 Ac.
O.R. 259D05

Ruth E. Junkermann
60.00 Ac.
O.R. 260B10

Parcel 2
Robert M. Sander
5.00 Ac.
O.R. 31313H02

Steven T. Smith
6.00 Ac. (Orig.)
O.R. 15783H07

Greg D. Conley
3.00 Ac.
O.R. 8709G20

Jefferson Water & Sewer District
19.732 Ac.
O.R. 13232C20

Lot 20 Quarter Township 4
Greg D. Conley
2.052 Ac.
O.R. 12544F03

Gary D. & Rita E.
Bowman
1.12 Ac.

DEFFENBAUGH ADD.
P.B. 25, Pg. 82
Lot 4

DARST'S ADD.
P.B. 19, Pg. 57

Franklin Steel Company
9.199 Ac.
O.R. 4623G15

City of Gahanna
1.656 Ac.
O.R. 24709C09

Daniel G. and Helen M. Deffenbaugh
First Tract
O.R. 24801H20

(44.376 Ac.)

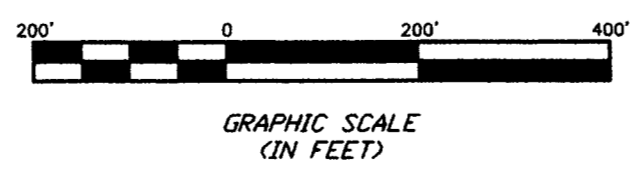
Columbus Corporate Center, Inc.
4.110 Ac.
D.B. 3479, Pg. 518

97.683 Ac. Total
-1.655 Ac. R.R. R/W
96.028 Ac. Net

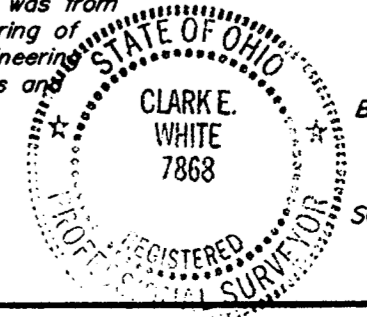
Sidney I. & Selma K. Blatt
D.B. 3018, Pg. 333

1929 Vertical Datum
▲ R.R. Spk. Fnd.
△ R.R. Spk. Set
● I.P. Fnd.
○ I.P. Set
I.P. set are 3/4" O.D. Iron Pin
30" long w/cap inscribed EMH&T.

SURVEYED & PLATTED
BY
EMT
CONSULTING ENGINEERS & SURVEYORS
170 MILL STREET
GAHANNA, OHIO 43230
(614) 471-5150



BASIS OF BEARINGS: Bearings are based on the Ohio State Plane Coordinate System as per NAD83. Control for bearings was from coordinates of monuments 5517 & 5518, having a bearing of N 85°51'27" W, established by the Franklin County Engineering Department, using Global Positioning System procedures and equipment.



By *Clark E. White*
Professional Surveyor No. 7868

SCALE: 1" = 200'
MAY 14, 1998
REVISED APRIL 2, 1999
REVISED APRIL 9, 1999