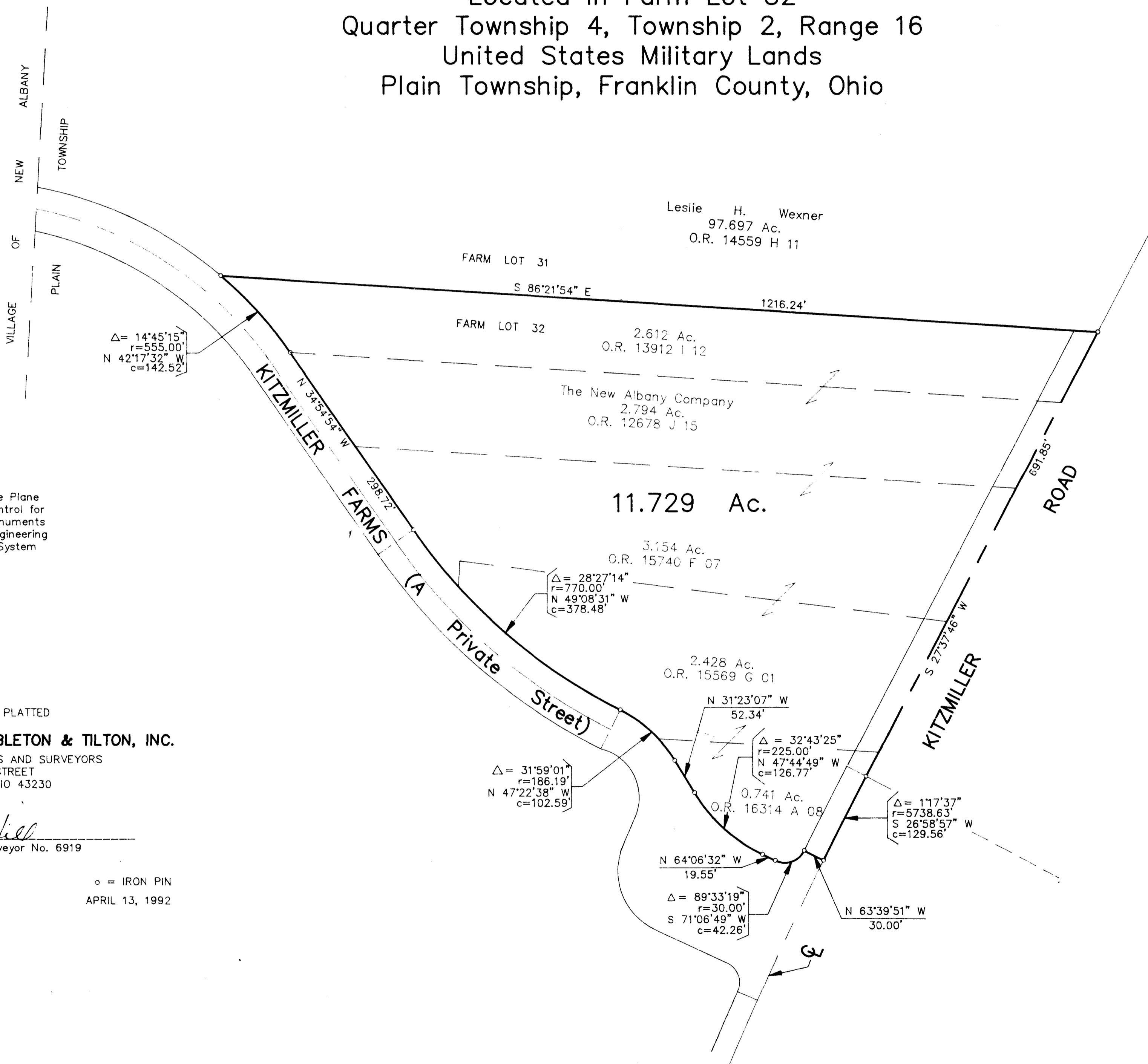


SURVEY OF 11.729 ACRE TRACT Located In Farm Lot 32 Quarter Township 4, Township 2, Range 16 United States Military Lands Plain Township, Franklin County, Ohio



Leslie H. Wexner
97.697 Ac.
O.R. 14559 H 11

FARM LOT 31
S 86°21'54" E 1216.24'

FARM LOT 32
2.612 Ac.
O.R. 13912 I 12

The New Albany Company
2.794 Ac.
O.R. 12678 J 15

11.729 Ac.

3.154 Ac.
O.R. 15740 F 07

2.428 Ac.
O.R. 15569 G 01

0.741 Ac.
O.R. 16314 A 08

BASIS OF BEARINGS :
Bearings are based on The Ohio State Plane Coordinate System as per NAD83. Control for bearings was from coordinates of monuments established by the Franklin County Engineering Department, using Global Positioning System procedures and equipment.

SURVEYED & PLATTED
BY
EVANS, MECHWART, HAMBLETON & TILTON, INC.
CONSULTING ENGINEERS AND SURVEYORS
170 MILL STREET
GAHANNA, OHIO 43230

By James R. Hill
Professional Surveyor No. 6919

SCALE : 1" = 100'

o = IRON PIN
APRIL 13, 1992

