

NEW ALBANY 45, INC.
O.R.V. 9463, PG. F-13
45.428 ACRES

129 ASSOCIATES, INC.
O.R.V. 9045, PG. F-18
129.315 ACRES

NEW ALBANY 100, INC.
O.R.V. 9463, PG. G-05
LOT 29 (LESS EXCEPTIONS)

PATRICK W. & SANDRA S.
MINAUGH
D.B. 3647, PG. 478
1.024 ACRES

THE GOLF CLUB CO.
O.R.V. 7089, PG. F-13
TRACT I

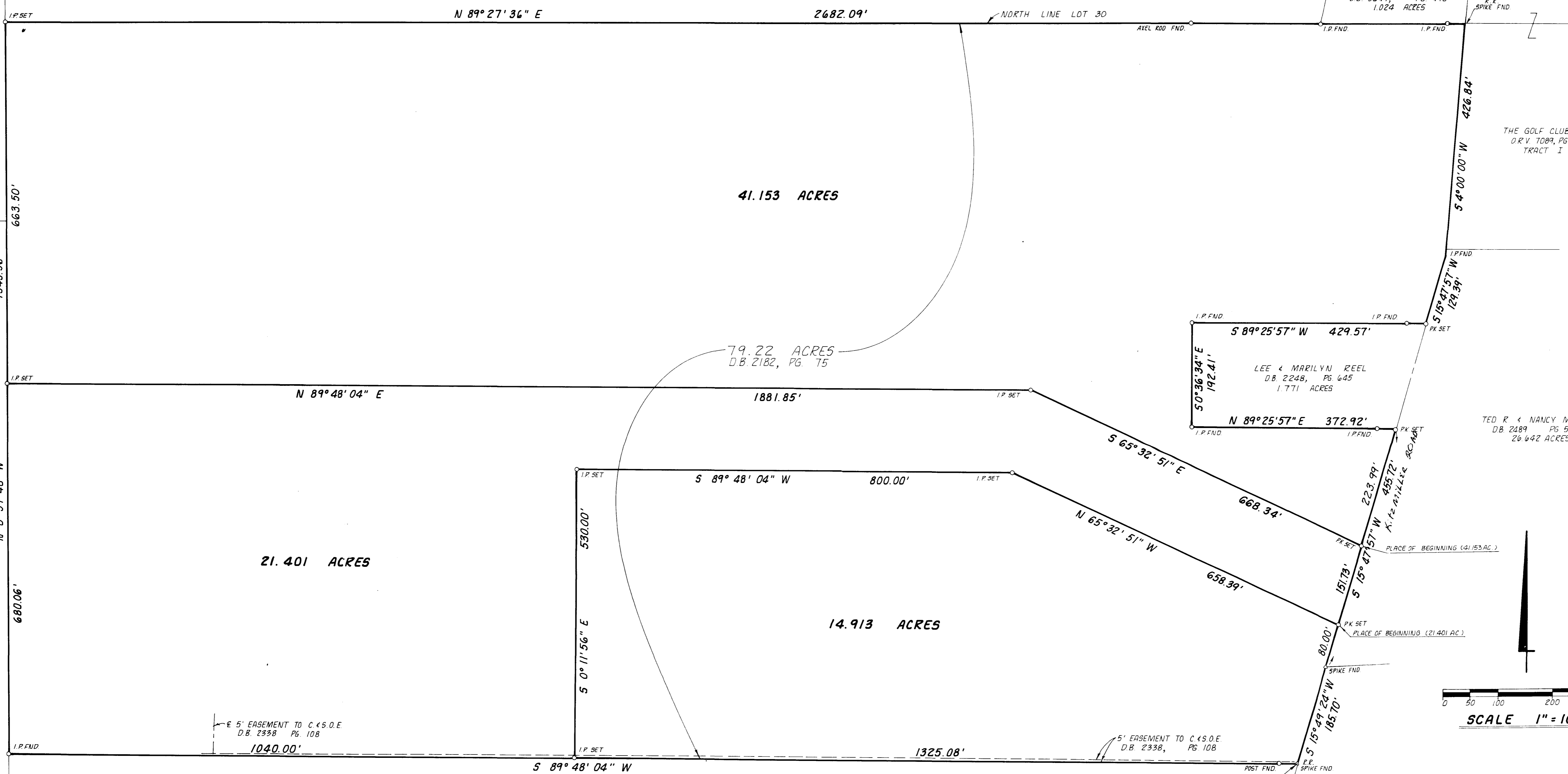
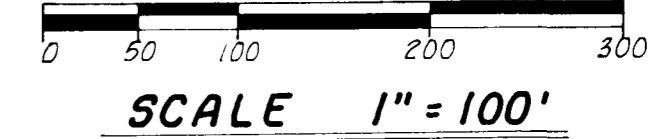
TED R. & NANCY METEER
D.B. 2489, PG. 521
26.642 ACRES

HUNTINGTON NATIONAL BANK OF COLUMBUS
O.R.V. 10091, PG. A-14
SECOND PARCEL

EASEMENT TO THE NORTHWESTERN OHIO NATURAL GAS CO.
D.B. 323, PG. 142, "IN, OVER AND THROUGH THE LANDS"

EASEMENT TO THE COLUMBUS RAILWAY, POWER AND LIGHT
CO., D.B. 1064, PG. 239, "OVER, ACROSS, THROUGH AND
UPON THE HIGHWAY, ALONG THE PROPERTY."

EASEMENT TO THE OHIO FUEL SUPPLY CO. IN MISCELLANEOUS
VOLUME 4, PG. 161, DOES NOT APPLY.



REVISIONS		DATE	BY	DESCRIPTION
BOUNDARY SURVEY		M-E BUILDING CONSULTANTS, INC.		
		CIVIL ENGINEERING DIVISION 1015 EAST BROAD STREET COLUMBUS, OHIO 43205		
HUBER PROPERTY		REGISTERED SURVEYOR	NO.	DATE
DESIGNED	DRAWN	DMT		
SCALE	HORIZ. 1" = 100' VERT.			
JOB	870152C			
DATE	SEPT., 1987			
SHEET NO.				
M-E BUILDING CONSULTANTS INC. COLUMBUS OHIO				
SEP 3 1987				
PRINTED				