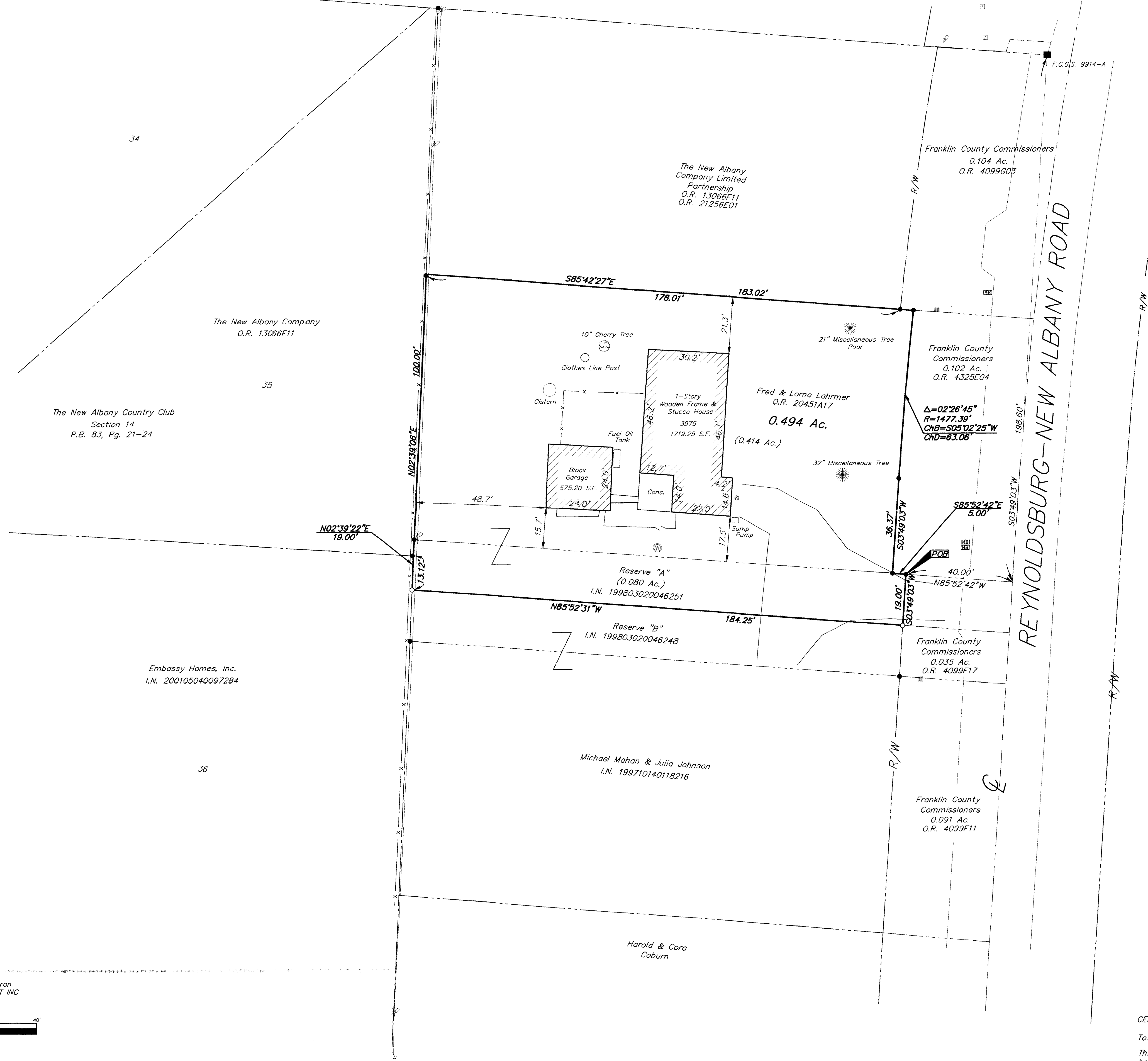


SURVEY OF ACREAGE PARCEL
LOT 35, QUARTER TOWNSHIP 4, TOWNSHIP 2, RANGE 16
UNITED STATES MILITARY LANDS
VILLAGE OF NEW ALBANY, FRANKLIN COUNTY, OHIO



LEGEND			
■	Water Meter	⊠	Traffic Lighting Pull Box
⊠	Flag Pole	⊙	Telephone Marker Post
⊙	Utility Pole	⊙	Gas Maker Post
⊙	Power Pole	⊙	Electric Meter
⊙	Telephone Pole	⊙	Gas Meter
⊠	Electric Tower	⊙	Gas Service
⊠	Guy Wire	⊙	Electric Outlet
⊙	Light pole	⊙	Guy Pole
⊙	Water Valve	⊙	Fence
⊙	Gas Valve	⊙	Flowarrow
⊙	Gas Valve	⊙	Sign
⊙	Electric Transformer	⊙	Mail Box
⊙	Telephone Pedestal	⊙	Air Condition Unit
⊙	Sprinkler	⊙	Storm Sewer Surface Inlet
⊙	Fire Hydrant	⊙	Storm Manhole
⊙	Cable Pedestal	⊙	Sanitary Manhole
⊙	Catch Basin	—	Water Line
⊙	Barbara	—	Gas Line
⊙	Yard Light	—	Storm Line
⊙	Electric Pull Box	—	Sanitary Line
⊙	Electric Outlet	—	Underground Electric
⊙	Telephone Booth/or Drive-Up	—	Overhead Electric
⊙	Electric Pedestal	—	Underground Telephone
⊙	Storm Sewer Surface Inlet	—	Overhead Telephone
⊙	Metal Traffic Signal Pole	—	Cable TV
		—	Centerline
		—	Right of Way Line

UTILITY STATEMENT:
 The utilities shown hereon have been located from field survey information and existing drawings. The surveyor makes no guarantee that the utilities shown comprise all such utilities in the area, either in service or abandoned. The surveyor further does not warrant that the utilities shown are in the exact location indicated although he does certify that they are located as accurately as possible from information available.

According to the Federal Emergency Management Agency's Flood Insurance Rate Map (dated August 2, 1995), the subject parcel shown hereon lies within Zone X (areas determined to be outside 500-year flood plain), Community Panel No. 39049C0180G & 39049C0183G.

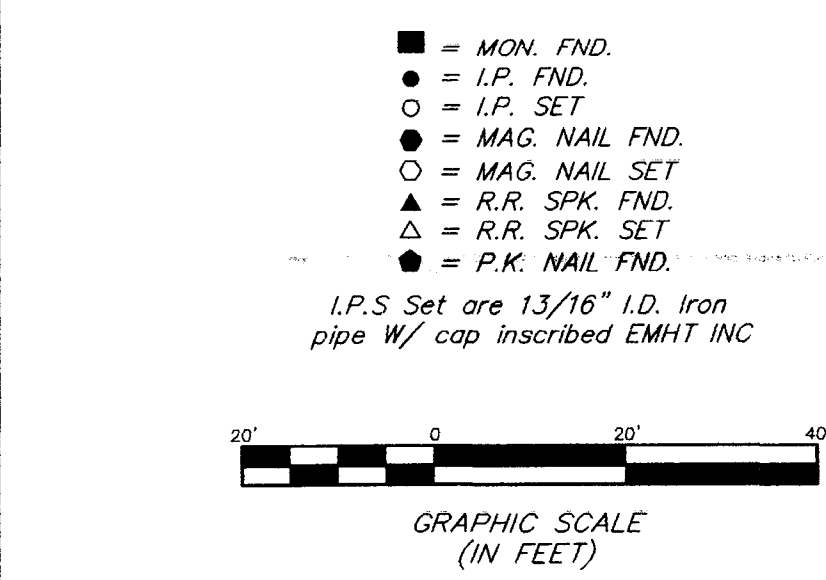
Note:
 Zoned R-1 (Residential Estate District)

CERTIFICATION: (Commitment No. 120022333)

To: The New Albany Company and Stewart Title Guaranty Company
 This is to certify, to the best of my knowledge, information and belief, that this map and the survey on which it is based were made in accordance with "Minimum Standard Detail Requirements for ALTA /ACSM and NSPS in 1999", and includes items 1, 3, 4 & 13 of Table A "Optional Survey Responsibilities & Specification thereof, and pursuant to the Accuracy Standards as adopted by ALTA, ACSM & NSPS in effect on the date of this certification.

SURVEYED & PREPARED BY
EMT INC.
 CONSULTING ENGINEERS & SURVEYORS
 170 MILL STREET
 CANTON, OHIO 43230
 (614) 471-5150

Professional Surveyor No. 7211
 JULY 19, 2002
 SCALE: 1" = 40'



BASIS OF BEARINGS: Bearings are based on the Ohio State Plane Coordinate System as per NAD83. Control for bearings was from coordinates of monuments FRANK 69 & FRANK 169, established by the Franklin County Engineering Department, using Global Positioning System procedures and equipment.