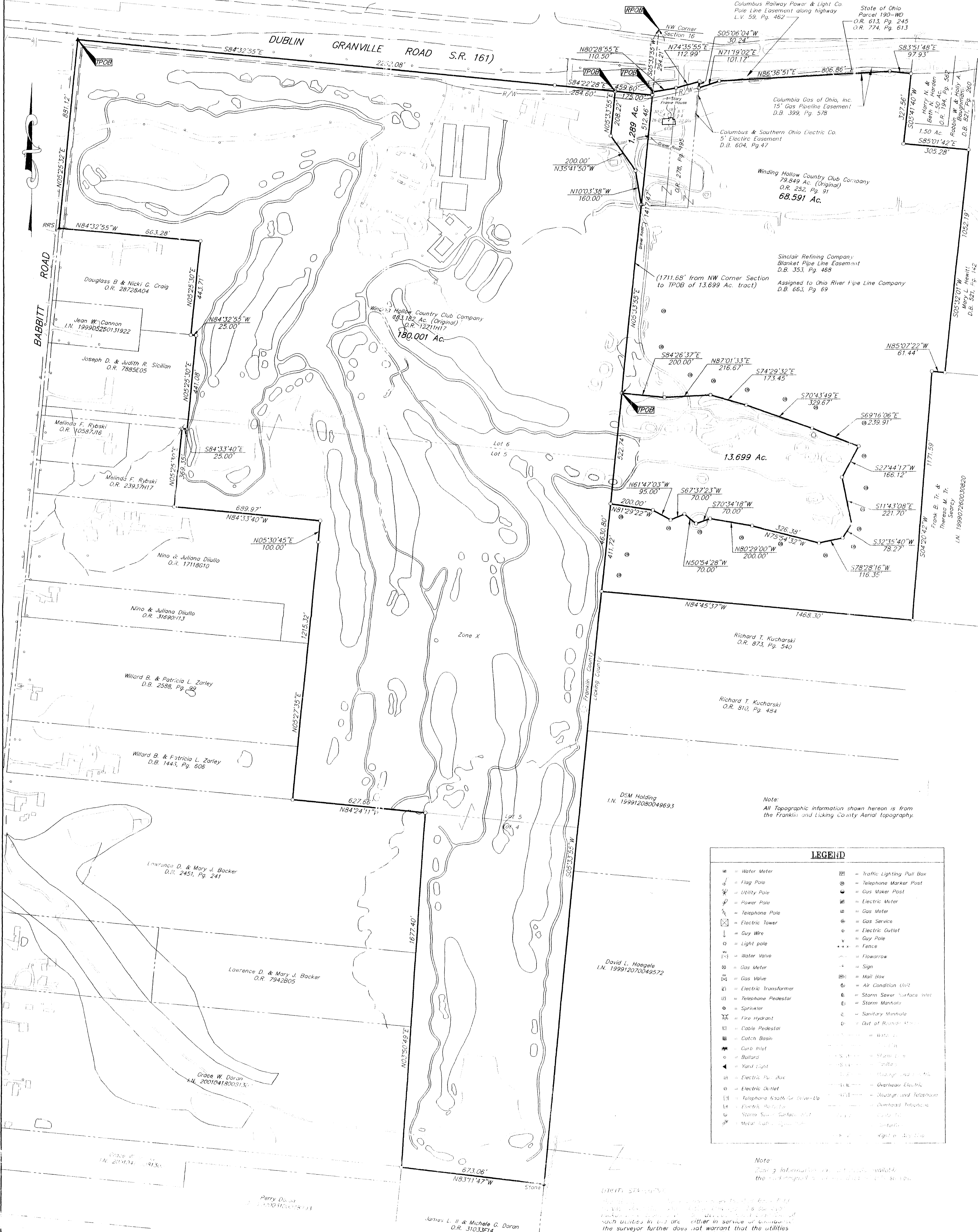


SURVEY OF ACREAGE PARCELS
LOTS 4, 5, AND 6, QUARTER TOWNSHIP 4,
TOWNSHIP 2, RANGE 16
AND
SECTION 16, TOWNSHIP 2, RANGE 15
UNITED STATES MILITARY LANDS
PLAIN & JERSEY TOWNSHIP, FRANKLIN & LICKING COUNTY, OHIO



LEGEND

⊕ = Water Meter	⊠ = Traffic Lighting Pull Box
⊙ = Flag Pole	⊙ = Telephone Marker Post
⊙ = Utility Pole	⊙ = Gas Meter Post
⊙ = Power Pole	⊙ = Electric Meter
⊙ = Telephone Pole	⊙ = Gas Meter
⊙ = Electric Tower	⊙ = Gas Service
⊙ = Guy Wire	⊙ = Electric Outlet
⊙ = Light pole	⊙ = Guy Pole
⊙ = Water Valve	⊙ = Fence
⊙ = Gas Meter	⊙ = Flowarrow
⊙ = Gas Valve	⊙ = Sign
⊙ = Electric Transformer	⊙ = Mail Box
⊙ = Telephone Pedestal	⊙ = Air Condition Unit
⊙ = Sprinkler	⊙ = Storm Sewer Surface Inlet
⊙ = Fire Hydrant	⊙ = Storm Manhole
⊙ = Cable Pedestal	⊙ = Sanitary Manhole
⊙ = Catch Basin	⊙ = Out of Boundary
⊙ = Curb Inlet	⊙ = Water
⊙ = Ballard	⊙ = Sewer
⊙ = Yard Light	⊙ = Storm Sewer
⊙ = Electric Pole Box	⊙ = Storm Sewer
⊙ = Electric Outlet	⊙ = Overhead Electric
⊙ = Telephone Booth for Service	⊙ = Overhead and Telephone
⊙ = Electric Pole Box	⊙ = Overhead Telephone
⊙ = Storm Sewer Surface Inlet	⊙ = Storm Sewer
⊙ = Metal Manhole	⊙ = Light Pole

Note:
 Zone X information is not available
 the information is not available in the
 (ENR) ST-1000

Bearings are based on the Franklin/Licking County Line having a bearing of South 05° 33' 35" West, of record in Official Record 252, Page 91, Recorder's Office, Licking County, Ohio and O.R. 12711H17, Recorder's Office, Franklin County, Ohio.

According to the Federal Emergency Management Agency's Flood Insurance Rate Map (dated December 1, 1983), the subject parcel shown hereon lies within Zone C (areas minimal flooding, Community Panel No. 3903280100 B).

According to the Federal Emergency Management Agency's Flood Insurance Rate Map (dated August 2, 1995), the subject parcel shown hereon lies within Zone X (areas determined to be outside 500-year flood plain). Community Panel No. 39049C0184 C.

CERTIFICATION: (Commitment No. 120012741)
 To: MBJ Holding, LLC and Stewart Title Guaranty Company

This is to certify, to the best of my knowledge, information and belief, that this map and the survey on which it is based were made in accordance with "Minimum Standard Detail Requirements for ALTA/ACSM and NSPS in 1999", and includes items 1, 3, 4 & 13 of Table A "Optional Survey Responsibilities & Specifications" thereof, and pursuant to the Accuracy Standards as adopted by ALTA, ACSM & NSPS in effect on the date of this certification.

STATE OF OHIO
 CLARK E. WHITE
 7868
 REGISTERED PROFESSIONAL SURVEYOR

SURVEYED & PREPARED BY
EMT
 CONSULTING ENGINEERS & SURVEYORS
 170 MILL STREET
 GAHANNA, OHIO 43230
 (614) 471-5150

Professional Surveyor No. 7868
 SCALE: 1" = 200'
 OCTOBER 16, 2002

MON. FND.
 I.P. FND.
 I.P. SET
 MAG. NAIL FND.
 MAG. NAIL SET
 R.R. SPK. FND.
 R.R. SPK. SET
 P.K. NAIL FND.

I.P.S. Set are 1 1/2" I.D. Iron pipe W/ cap inscribed EMHT INC

GRAPHIC SCALE
 0 200 400
 FEET