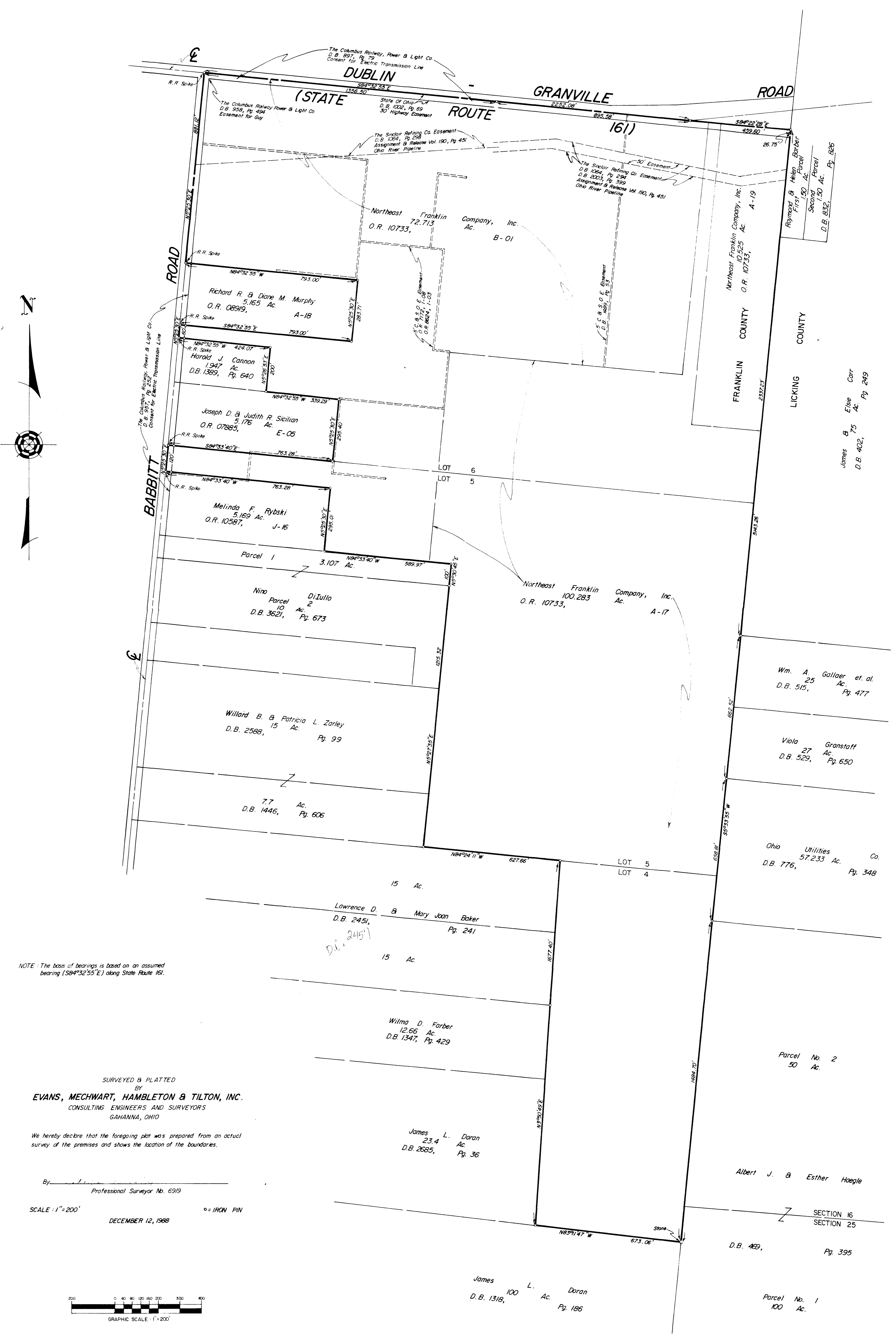


SURVEY OF 183.182 ACRE TRACT
 Located In Lots 4, 5 and 6, Quarter Township 4, Township 2, Range 16
 United States Military Lands
 Plain Township, Franklin County, Ohio



NOTE: The basis of bearings is based on an assumed bearing (S84°32'55"E) along State Route 161.

SURVEYED & PLATTED
 BY
EVANS, MECHWART, HAMBLETON & TILTON, INC.
 CONSULTING ENGINEERS AND SURVEYORS
 GAHANNA, OHIO

We hereby declare that the foregoing plat was prepared from an actual survey of the premises and shows the location of the boundaries.

By _____
 Professional Surveyor No. 6919

SCALE: 1"=200'
 DECEMBER 12, 1968

