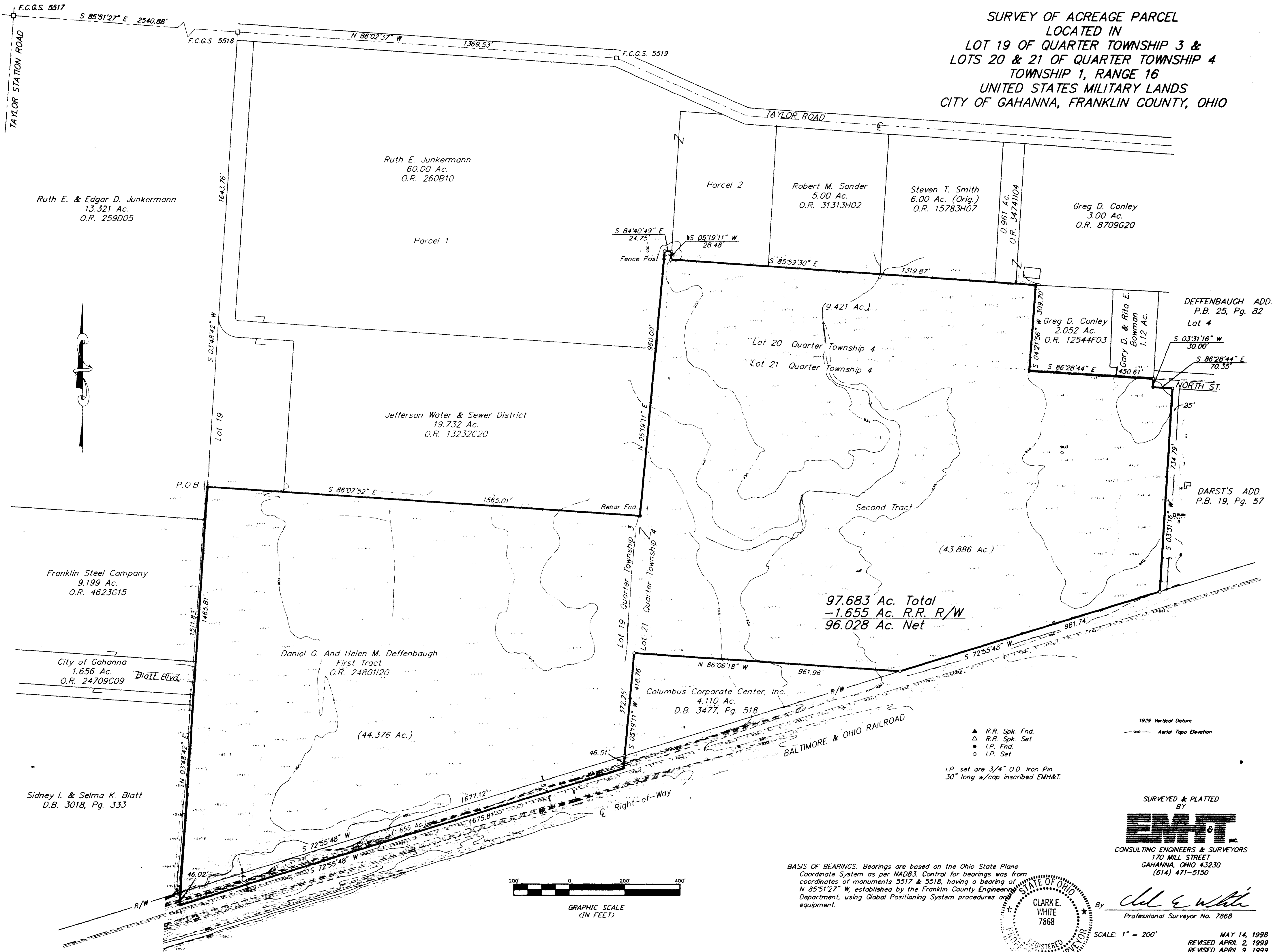


**SURVEY OF ACREAGE PARCEL
LOCATED IN
LOT 19 OF QUARTER TOWNSHIP 3 &
LOTS 20 & 21 OF QUARTER TOWNSHIP 4
TOWNSHIP 1, RANGE 16
UNITED STATES MILITARY LANDS
CITY OF GAHANNA, FRANKLIN COUNTY, OHIO**



Ruth E. & Edgar D. Junkermann
13.321 Ac.
O.R. 259D05

Ruth E. Junkermann
60.00 Ac.
O.R. 260B10

Parcel 2
Robert M. Sander
5.00 Ac.
O.R. 31313H02

Steven T. Smith
6.00 Ac. (Orig.)
O.R. 15783H07

Greg D. Conley
3.00 Ac.
O.R. 8709G20

Jefferson Water & Sewer District
19.732 Ac.
O.R. 13232C20

Lot 20 Quarter Township 4
Lot 21 Quarter Township 4
(9.421 Ac.)

Greg D. Conley
2.052 Ac.
O.R. 12544F03

Gary D. & Rita E. Bowman
1.12 Ac.

DEFFENBAUGH ADD.
P.B. 25, Pg. 82
Lot 4

DARST'S ADD.
P.B. 19, Pg. 57

Franklin Steel Company
9.199 Ac.
O.R. 4623G15

City of Gahanna
1.656 Ac.
O.R. 24709C09

Daniel G. And Helen M. Deffenbaugh
First Tract
O.R. 24801I20

Columbus Corporate Center, Inc.
4.110 Ac.
D.B. 3477, Pg. 518

Sidney I. & Selma K. Blatt
D.B. 3018, Pg. 333

97.683 Ac. Total
-1.655 Ac. R.R. R/W
96.028 Ac. Net

- ▲ R.R. Spk. Fnd.
 - △ R.R. Spk. Set
 - I.P. Fnd.
 - I.P. Set
- I.P. set are 3/4" O.D. Iron Pin
30" long w/cap inscribed EMH&T.

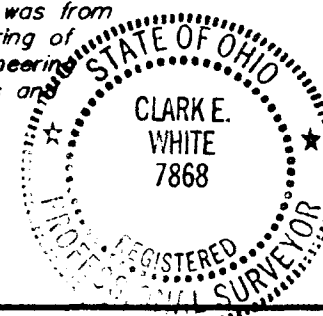
1929 Vertical Datum
--- Aerial Topo Elevation

SURVEYED & PLATTED
BY

EMH&T
CONSULTING ENGINEERS & SURVEYORS
170 MILL STREET
GAHANNA, OHIO 43230
(614) 471-5150

By *Clark E. White*
Professional Surveyor No. 7868

BASIS OF BEARINGS: Bearings are based on the Ohio State Plane
Coordinate System as per NAD83. Control for bearings was from
coordinates of monuments 5517 & 5518, having a bearing of
N 85°51'27" W, established by the Franklin County Engineering
Department, using Global Positioning System procedures and
equipment.



SCALE: 1" = 200'
MAY 14, 1998
REVISED APRIL 2, 1999
REVISED APRIL 9, 1999



GRAPHIC SCALE
(IN FEET)