

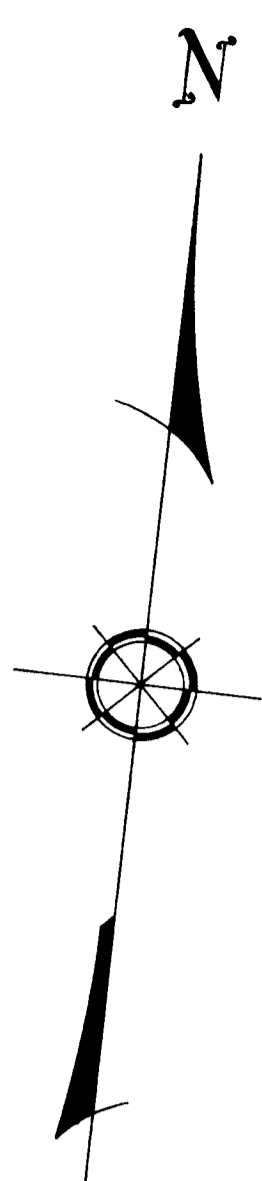
C-39-F

SURVEY OF ACREAGE PARCELS

Located in Lot 20, Quarter Township 3, Township 1, Range 16

United States Military Lands

Jefferson Township, Franklin County, Ohio



C-39-F

Surveyed & Platted

By

EVANS, MECHWART, HAMBLETON & TILTON, INC.

Consulting Engineers & Surveyors

Gahanna, Ohio

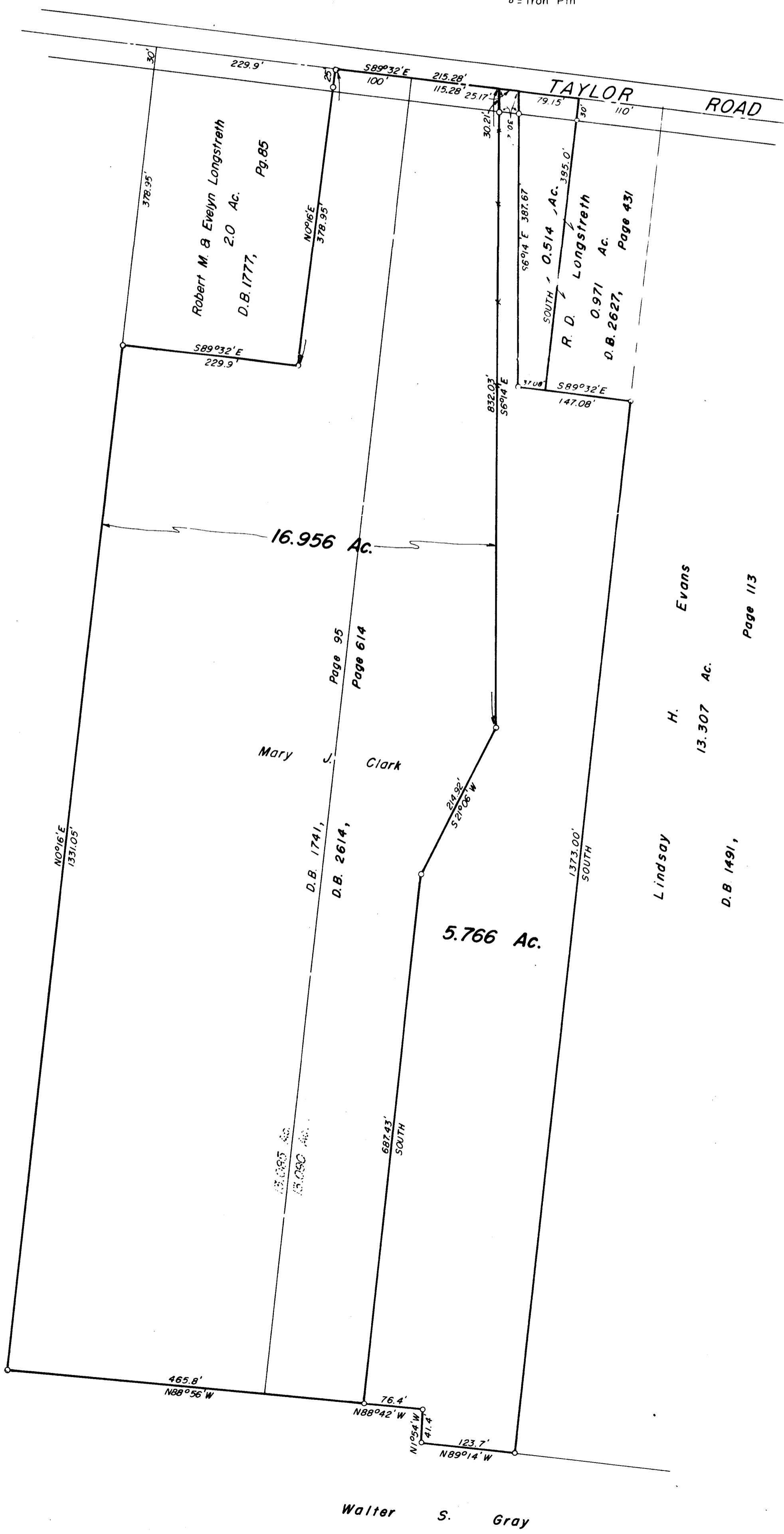
By ME Evans
Registered Surveyor No. 483

Scale: 1" = 100'

July 21, 1967

Revised May 14, 1971

o = Iron Pin



4460 120 056 S TAYLOR ROAD 1967 0396 003

C-39-F