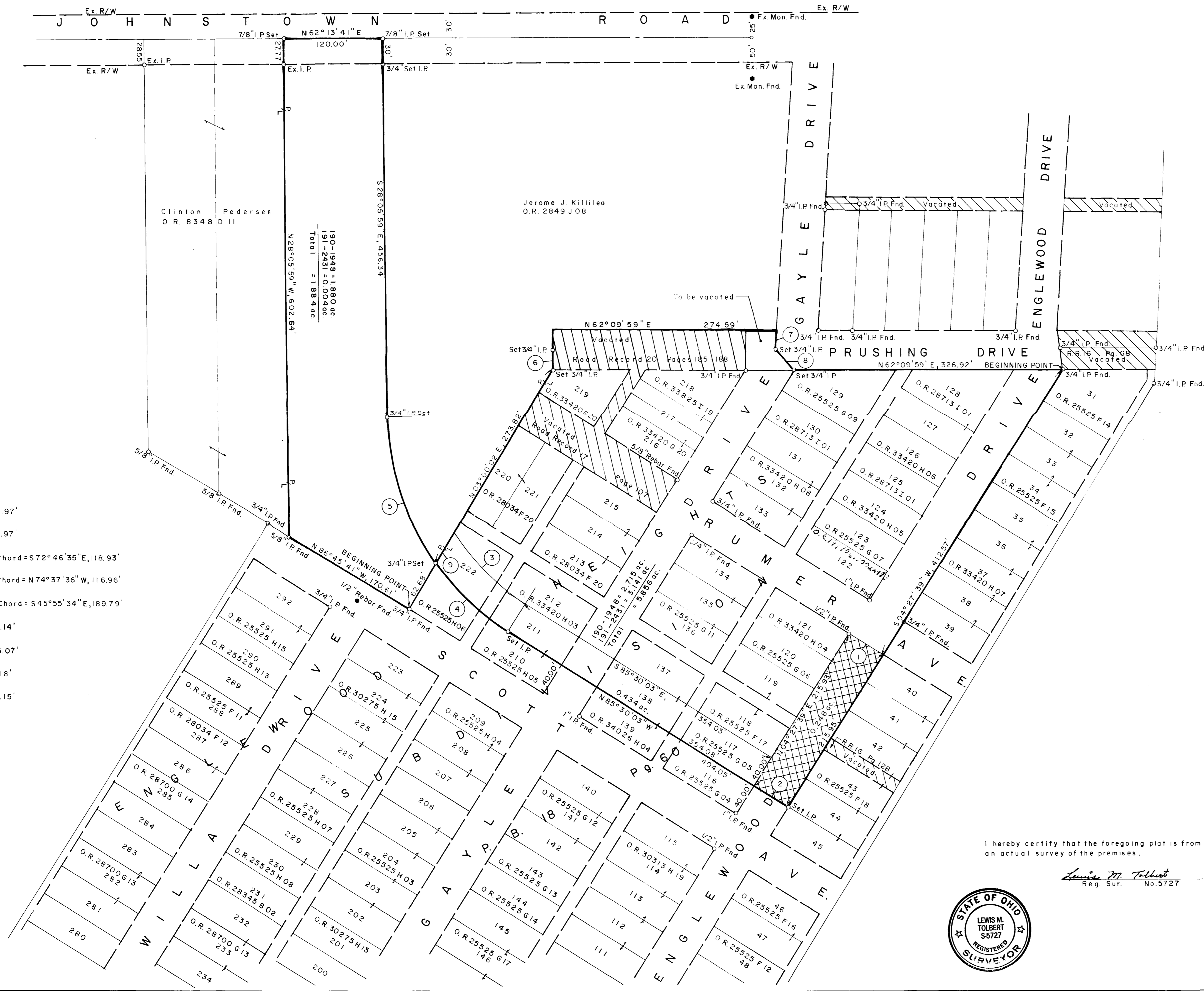


Situated in the Township of Mifflin, County of Franklin, State of Ohio and being a part of Quarter Township 4, Township 1, Range 17, U. S. M. L. and also being a part of the "Englewood Heights Subdivision" as shown of record in Plat Book 18, Page 60.



- ① S 85° 31' 22" E, 49.97'
- ② N 85° 30' 03" W, 49.97'
- ③ Radius = 269.98', Chord = S 72° 46' 35" E, 118.93'
- ④ Radius = 309.98', Chord = N 74° 37' 36" W, 116.96'
- ⑤ Radius = 309.98', Chord = S 45° 55' 34" E, 189.79'
- ⑥ N 24° 04' 19" W, 50.14'
- ⑦ S 24° 48' 19" E, 25.07'
- ⑧ S 64° 31' 19" E, 31.18'
- ⑨ N 03° 00' 02" E, 44.15'

Surveyed by  
Compton-Tolbert Inc.  
2844 Johnstown Road  
Columbus, Ohio 43219

I hereby certify that the foregoing plat is from an actual survey of the premises.

*Lewis M. Tolbert*  
Reg. Sur. No. 5727



Basis of bearings is Ex. Concrete Monuments "C" & "D" of the Port Columbus Boundary Survey, N 13° 04' 53" E.

1997