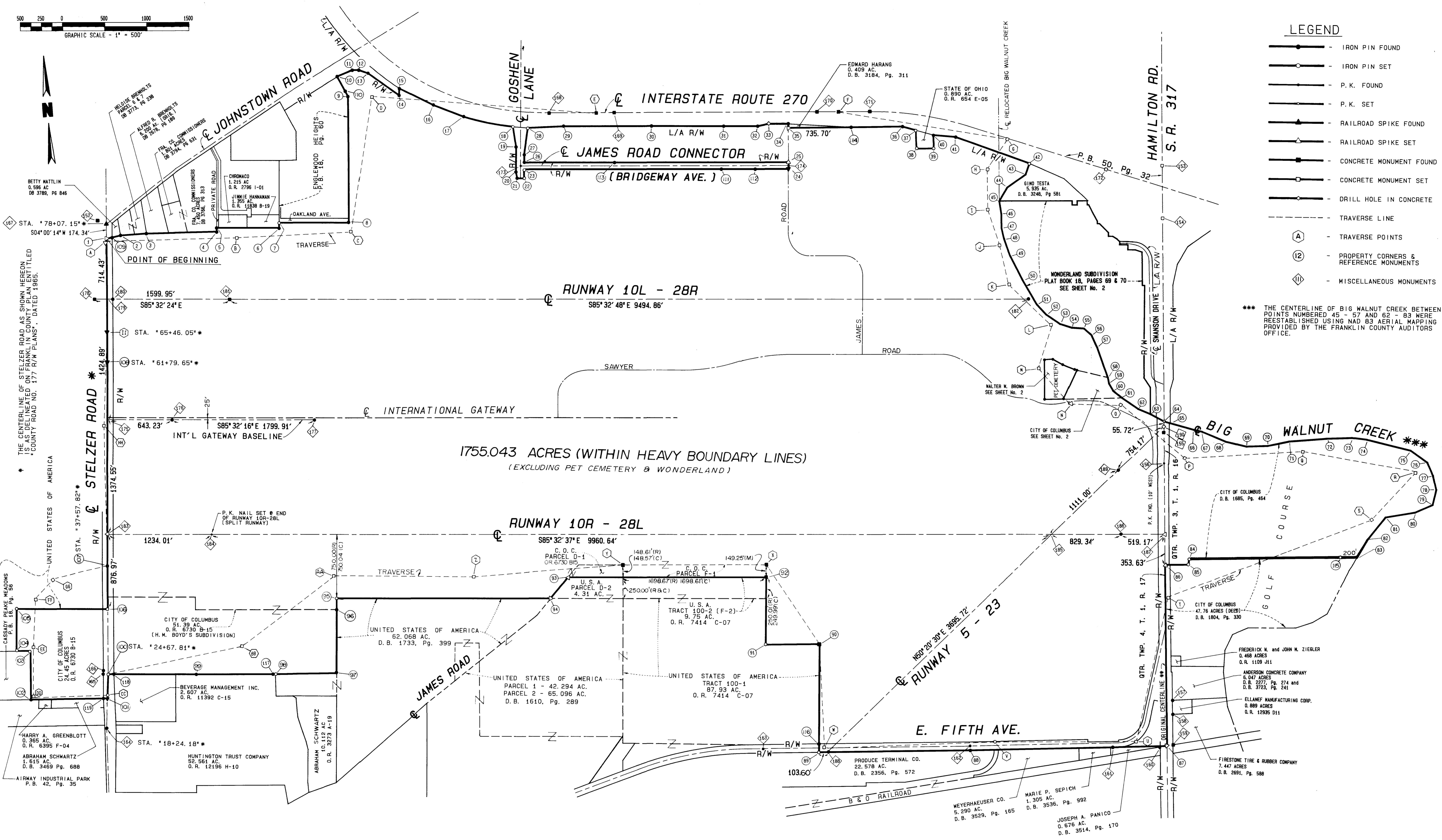


**LEGEND**

- IRON PIN FOUND
- IRON PIN SET
- P.K. FOUND
- P.K. SET
- RAILROAD SPIKE FOUND
- RAILROAD SPIKE SET
- CONCRETE MONUMENT FOUND
- CONCRETE MONUMENT SET
- DRILL HOLE IN CONCRETE
- TRAVERSE LINE
- TRAVERSE POINTS
- PROPERTY CORNERS & REFERENCE MONUMENTS
- MISCELLANEOUS MONUMENTS

\*\*\* THE CENTERLINE OF BIG WALNUT CREEK BETWEEN POINTS NUMBERED 45 - 57 AND 62 - 83 WERE REESTABLISHED USING NAD 83 AERIAL MAPPING PROVIDED BY THE FRANKLIN COUNTY AUDITORS OFFICE.

NOTE: ADDITIONAL PROPERTIES TO THE AREA WEST OF STELZER ROAD ARE OR WILL BE OWNED BY THE COLUMBUS METROPOLITAN AIRPORT AUTHORITY. A MAP THEREOF IS ON FILE WITH PORT COLUMBUS INTERNATIONAL AIRPORT.



PREPARED BY:  
 S. D. POMEROY AND ASSOCIATES  
 Consulting Engineers and Surveyors  
 6877 North High Street  
 Worthington, Ohio 43085  
 (614) 885-2498

# PLAT OF SURVEY

## PORT COLUMBUS INTERNATIONAL AIRPORT

SHEET 1 OF 3

\*\* THE ORIGINAL CENTERLINE OF HAMILTON ROAD AS SHOWN HEREON IS THE OLD TOWNSHIP LINE BETWEEN MIFFLIN TOWNSHIP AND JEFFERSON TOWNSHIP. THE CENTERLINE OF HAMILTON ROAD SHOWN ON PLANS ENTITLED S.H. 655 A-B (1930 +/-) IS 10' FEET WESTERLY FROM THE ORIGINAL CENTERLINE; THE CENTERLINE SHOWN ON PLANS ENTITLED S.H. 655 A-B (1941) IS 8.5' FEET WESTERLY FROM THE ORIGINAL CENTERLINE. THE P.K. NAIL FOUND AT THE CENTERLINE OF SAWYER ROAD AND THE CENTERLINE MONUMENT FOUND AT STATION 44+00 ON HAMILTON ROAD ARE ON THE LINE 10' FEET WESTERLY OF THE ORIGINAL CENTERLINE.

P E T C E M E T E R Y

W O N D E R L A N D

PT #	MONUMENTATION TYPE	NORTHING (M)	EASTING (M)
145	IRON PIN FOUND	N 86°50'28" W 222.96'	E = 568185.3693
146	IRON PIN FOUND	N 4°35'32" E 469.20'	E = 568117.5149
147	IRON PIN FOUND	S 89°24'28" E 97.50'	E = 568128.9653
148	IRON PIN FOUND	S 56°31'28" E 140.99'	E = 568158.6804
149	IRON PIN FOUND	S 63°06'28" E 145.99'	E = 568194.5267
150	IRON PIN FOUND	S 72°37'28" E 28.90'	E = 568234.2136
151	IRON PIN FOUND	S 29°54'32" W 376.71'	E = 568242.6212

PT #	MONUMENTATION TYPE	NORTHING (M)	EASTING (M)
45		N = 222603.1262	E = 568010.2279
121	IRON PIN SET	S 85°48'09" E 864.85'	E = 568273.1274
122	IRON PIN SET	S 3°50'37" W 48.82'	E = 568272.1300
123	IRON PIN FOUND	S 85°48'09" E 60.00'	E = 568290.3684
124	IRON PIN FOUND	N 3°50'37" E 48.82'	E = 568291.3659
125	IRON PIN SET	S 85°48'09" E 119.96'	E = 568327.8302
126		S 3°50'37" W 48.82'	E = 568326.8327
127		S 85°48'09" E 18.68'	E = 568332.5121
128		S 23°38'40" E 219.41'	E = 568359.3328
129		S 3°51'46" W 30.00'	E = 568358.7168
130		S 85°07'24" E 25.00'	E = 568366.3084
131		S 40°38'23" E 149.80'	E = 568396.0455
132		S 3°50'56" W 45.00'	E = 568395.1248
133		S 85°08'04" E 50.00'	E = 568410.3093
134		S 54°26'15" E 58.77'	E = 568424.8805
135	IRON PIN FOUND	S 40°26'09" E 43.48'	E = 568433.4760
136		S 4°51'24" W 40.00'	E = 568432.4438
137		S 85°08'36" E 99.60'	E = 568462.6921
138		S 6°33'00" W 57.60'	E = 568460.6893
139		S 84°50'03" E 89.99'	E = 568488.0081
140		S 68°13'10" E 83.93'	E = 568511.7637
141		S 4°09'38" W 397.25'	E = 568502.9788
142		S 85°07'35" E 27.01'	E = 568511.1816
143		S 4°52'26" W 1095.01'	E = 568482.8239
144		S 29°56'16" E 135.34'	E = 568503.4117
63		S 4°09'27" W 315.00'	E = 568496.4512

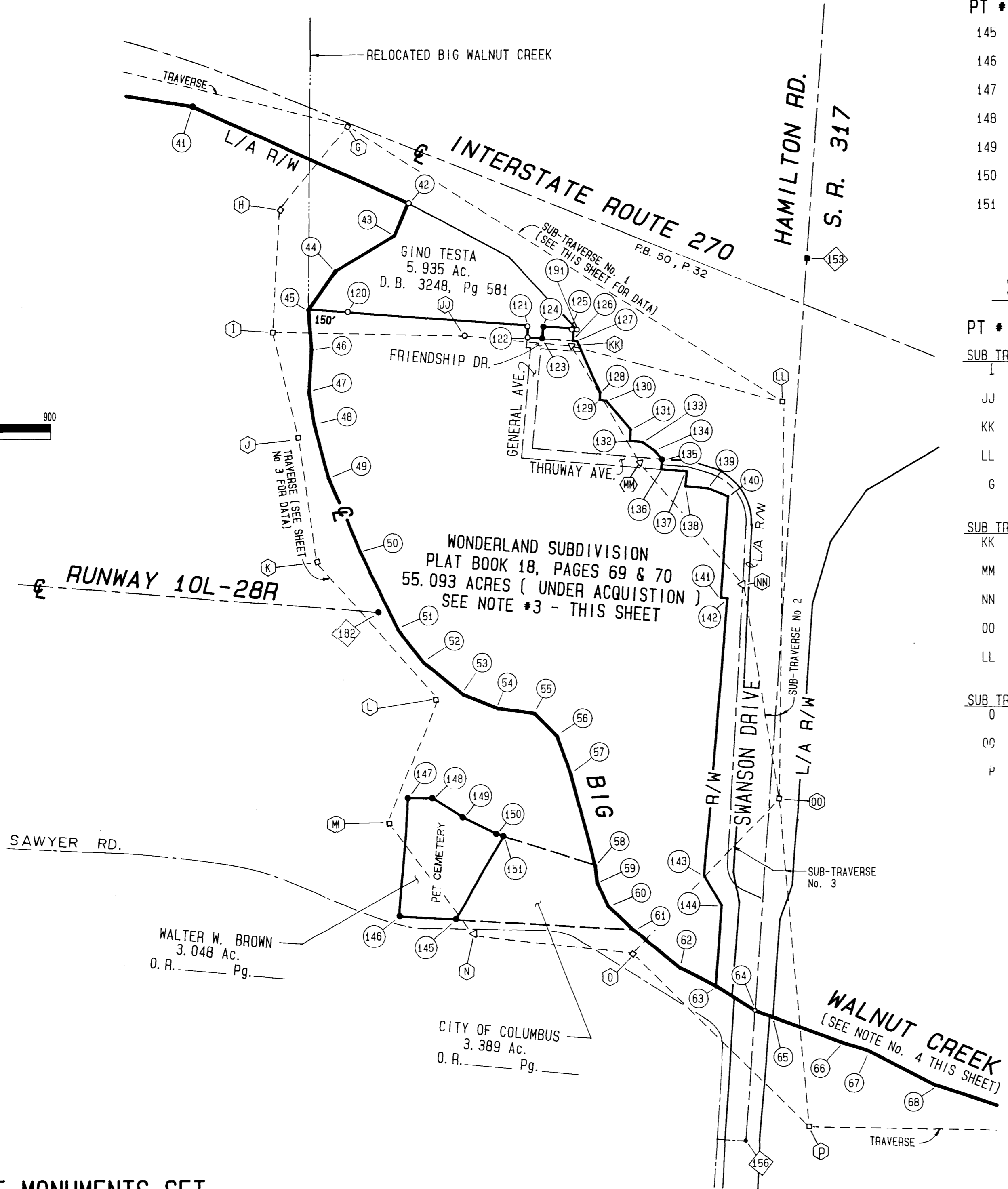
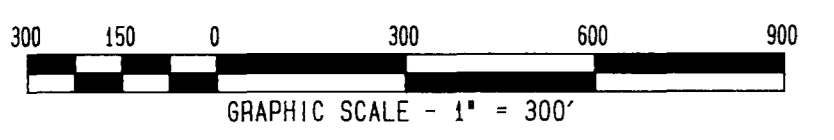
S U B T R A V E R S E S

PT #	MONUMENTATION TYPE	NORTHING (M)	EASTING (M)
<b>SUB TRAVERSE No. 1</b>			
I	CONCRETE MONUMENT SET	N = 222576.2585	E = 567966.6191
JJ	IRON PIN SET	S 88°46'10" E 752.94'	E = 568196.0620
KK	RAILROAD SPIKE SET	S 84°32'01" E 426.49'	E = 568325.4651
LL	CONCRETE MONUMENT SET	S 75°03'32" E 861.64'	E = 568579.2131
G	CONCRETE MONUMENT SET	N 57°33'19" W 2027.78'	E = 568057.6189
SUB TRAVERSE NO. 1 CLOSURE (BEFORE ADJUSTMENT) WAS 1:108,425			
<b>SUB TRAVERSE No. 2</b>			
KK	RAILROAD SPIKE SET	N = 222558.9461	E = 568325.4651
MM	RAILROAD SPIKE SET	S 30°16'34" E 538.78'	E = 568408.2590
NN	RAILROAD SPIKE SET	S 40°19'28" E 622.04'	E = 568530.9510
OO	CONCRETE MONUMENT SET	N = 222272.5765	E = 568572.5375
LL	CONCRETE MONUMENT SET	S 9°14'45" E 849.17'	E = 568572.5375
LL	CONCRETE MONUMENT SET	N 00°48'24" E 1555.67'	E = 568579.2131
SUB TRAVERSE NO. 2 CLOSURE (BEFORE ADJUSTMENT) WAS 1:124,367			
<b>SUB TRAVERSE No. 3</b>			
O	CONCRETE MONUMENT SET	N = 221832.7828	E = 568397.5413
OQ	CONCRETE MONUMENT SET	N 43°30'45" E 833.88'	E = 568572.5375
P	CONCRETE MONUMENT SET	S 5°07'06" E 1290.96'	E = 568607.6419
SUB TRAVERSE NO. 3 CLOSURE (BEFORE ADJUSTMENT) WAS 1:63249			

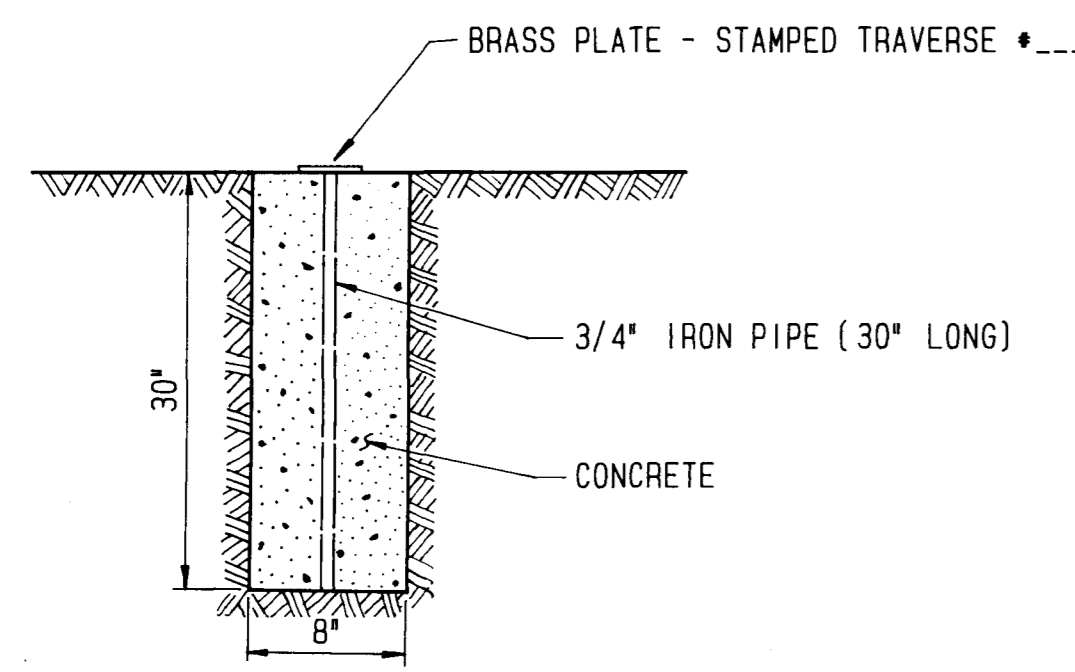
**REFERENCE MONUMENTS**

120	IRON PIN SET (ON LINE 45 - 121)	N = 222599.7797	E = 568055.8253
191	IRON PIN FOUND	N = 222579.6538	E = 568330.2858

- NOTES:**
- BASIS OF BEARINGS - OHIO STATE PLANE COORDINATES, NAD 83 SYSTEM, SOUTH ZONE. BASED ON NAD 83 MONUMENTS NOTED ON SHEET No. 3.
  - COORDINATES LISTED ABOVE ARE IN METERS. DISTANCES LISTED HEREIN ARE GRID DISTANCES AND ARE SHOWN IN FEET. TO CONVERT TO GROUND DISTANCES, THE GRID DISTANCES SHOWN MUST BE MULTIPLIED BY 1.00004035. TO CONVERT TO COORDINATES TO FEET, THE COORDINATES SHOWN MUST BE MULTIPLIED BY 3.28083333.
  - WONDERLAND SUBDIVISION ACREAGE WAS CALCULATED BY USING: THE CENTERLINE OF BIG WALNUT CREEK (OBTAINED FROM NAD 83 AERIAL MAPPING PROVIDED BY THE FRANKLIN COUNTY AUDITORS OFFICE); THE WESTERLY RIGHT-OF-WAY LINE OF HAMILTON AVE., THE WESTERLY RIGHT-OF-WAY LINE OF RELOCATED SWANSON AVE., THE SOUTHERLY LIMITED ACCESS RIGHT-OF-WAY LINE OF INTERSTATE ROUTE 270 (ALL THREE OF WHICH WERE OBTAINED FROM THE I-270 PLANS ENTITLED "FRA-270-28.30N / FRA-317-16.67 R/W PLANS", DATED 1970, SEE SHEETS 13, 22, AND 23); THE EXISTING MONUMENTATION FOUND ALONG THE SOUTH LINE OF THE 5.935 ACRE TRACT OF LAND (DESCRIBED IN A DEED TO GINO TESTA OF RECORD IN D.B. 3248, Pg. 581 AND THE NORTH LINE OF WONDERLAND SUBDIVISION OF RECORD IN PB. 18 Pgs 69&70). THE 55.093 ACRES SHOWN AS (UNDER ACQUISITION) REFLECTS ALL OF THE PROPERTY INSIDE OF THE ABOVE DESCRIBED BOUNDARY, WHICH INCLUDES THE ACREAGE OF PROPERTIES STILL OWNED BY PRIVATE INDIVIDUALS IN WONDERLAND AT THIS TIME AND ALL ACREAGE THAT LIES WITHIN DEDICATED RIGHT-OF-WAY WITHIN THE WONDERLAND BOUNDARY. NO MONUMENTS HAVE BEEN SET BETWEEN POINTS NUMBERED 126 - 144.
  - THE CENTERLINE OF BIG WALNUT CREEK BETWEEN POINTS NUMBERED 45 - 57 AND 62 - 68 WERE REESTABLISHED USING NAD 83 AERIAL MAPPING PROVIDED BY THE FRANKLIN COUNTY AUDITORS OFFICE.



DETAIL OF CONCRETE MONUMENTS SET



PLAT OF SURVEY  
PORT COLUMBUS INTERNATIONAL AIRPORT  
SHEET 2 OF 3

PREPARED BY:  
S. D. POMEROY AND ASSOCIATES  
Consulting Engineers and Surveyors  
6877 North High Street  
Worthington, Ohio 43085  
(614) 885-2498

PORT COLUMBUS AIRPORT BOUNDARY

PT #	MONUMENTATION TYPE	NORTHING (M)	EASTING (M)	PT #	MONUMENTATION TYPE	NORTHING (M)	EASTING (M)
1	RAILROAD SPIKE SET	N = 222717.6251	E = 564782.2488	56		N = 222093.4297	E = 568306.7020
2	IRON PIN FOUND	N 80°32'03" E 168.30'	E = 564832.8493	57	S 20°05'00" E 161.50'	N = 222047.1976	E = 568323.6053
3	IRON PIN FOUND	N 89°54'05" E 311.83'	E = 564927.8950	58	S 14°38'01" E 370.90'	N = 221937.8155	E = 568352.1656
4	IRON PIN FOUND	S 87°06'48" E 834.32'	E = 565181.8735	59	S 7°04'29" E 71.55'	N = 221916.1731	E = 568354.8517
5	IRON PIN FOUND	N 4°12'28" E 43.36'	E = 565182.8433	60	S 25°00'31" E 99.31'	N = 221888.7413	E = 568367.6483
6	IRON PIN FOUND	S 85°35'09" E 741.58'	E = 565408.2071	61	S 47°14'12" E 134.81'	N = 221860.8422	E = 568397.8153
7	IRON PIN SET	N 04°26'51" E 64.66'	E = 565409.7355	62	S 50°55'00" E 235.00'	N = 221815.6843	E = 568453.4152
8	IRON PIN FOUND	S 85°31'21" E 835.14'	E = 565563.5110	63	S 62°59'27" E 158.48'	N = 221793.7475	E = 568496.4512
9	IRON PIN FOUND	N 4°00'19" E 1492.56'	E = 565595.2877	64	S 57°46'34" E 181.78'	N = 221764.2025	E = 568543.3243
10	IRON PIN FOUND	N 24°42'16" W 270.50'	E = 565660.8291	65	S 69°54'53" E 72.37'	N = 221756.6269	E = 568564.0421
11	IRON PIN FOUND	N 71°14'45" E 196.89'	E = 565717.6547	66	S 69°54'27" E 289.71'	N = 221726.2911	E = 568646.9724
12	IRON PIN FOUND	S 85°48'06" E 74.82'	E = 565740.3999	67	S 72°35'14" E 107.15'	N = 221716.5171	E = 568678.1366
13	IRON PIN FOUND	S 66°40'10" E 116.22'	E = 565772.9282	68	S 62°40'00" E 295.00'	N = 221675.2307	E = 568758.0136
14	IRON PIN FOUND	S 50°12'44" E 454.15'	E = 565879.2979	69	S 72°00'00" E 257.00'	N = 221651.0242	E = 568832.5135
15	IRON PIN FOUND	N 4°06'47" E 83.30'	E = 565881.1191	70	S 87°20'00" E 255.00'	N = 221647.4081	E = 568890.1534
16	IRON PIN FOUND	S 59°25'12" E 456.56'	E = 566000.9254	71	N 82°50'00" E 255.00'	N = 221657.1046	E = 568987.2704
17	IRON PIN FOUND	S 64°48'23" E 384.67'	E = 566107.0202	72	N 90°00'00" E 448.00'	N = 221657.1046	E = 569123.8210
18	IRON PIN SET	Δ = 11°10'39" R = 3049.79' CHD BEARING = S74°00'56"E E = 594.02'	E = 566281.0771	73	S 87°20'00" E 300.00'	N = 221652.8503	E = 569215.1622
19	IRON PIN FOUND	S 4°11'18" E 239.89'	E = 566286.4171	74	S 78°20'00" E 178.00'	N = 221641.8791	E = 569268.2959
20	IRON PIN FOUND	S 4°39'33" W 300.00'	E = 566278.9896	75	S 71°30'00" E 533.00'	N = 221590.3302	E = 569422.3593
21	IRON PIN FOUND	S 6°39'03" E 76.49'	E = 566281.6898	76	S 49°35'00" E 245.00'	N = 221541.9146	E = 569479.2140
22	IRON PIN SET	S 85°20'27" E 80.00'	E = 566305.9930	77	S 17°50'00" E 175.00'	N = 221491.1374	E = 569495.5493
23	IRON PIN SET	N 4°39'33" E 107.68'	E = 566308.6589	78	S 8°10'00" E 177.00'	N = 221437.7348	E = 569503.2131
24	RAILROAD SPIKE FOUND	S 85°37'14" E 3136.36'	E = 567261.8308	79	S 18°00'00" W 188.00'	N = 221383.2368	E = 569485.5056
25	RAILROAD SPIKE SET	N 4°11'47" E 80.00'	E = 567263.6151	80	S 71°00'00" W 225.00'	N = 221360.9093	E = 569420.6618
26	IRON PIN FOUND	N 85°37'14" W 3135.71'	E = 566310.6395	81	S 85°00'00" W 355.00'	N = 221351.4787	E = 569312.8693
27	IRON PIN FOUND	N 4°39'33" E 87.33'	E = 566312.8017	82	S 43°20'00" W 345.00'	N = 221274.9909	E = 569240.7068
28	IRON PIN SET	N 12°44'56" E 326.53'	E = 566334.7652	83	S 35°50'00" W 221.03'	N = 221220.3727	E = 569201.2666
29	IRON PIN FOUND	S 88°06'36" E 421.81'	E = 566463.2636	84	N 86°22'44" W 1996.32'	N = 221258.8032	E = 568594.0023
30	IRON PIN FOUND	S 85°46'24" E 1040.61'	E = 566779.5794	85	S 3°57'16" W 65.00'	N = 221239.0383	E = 568592.6360
31	IRON PIN FOUND	S 85°26'31" E 855.94'	E = 567039.6467	86	RAILROAD SPIKE SET N 86°02'44" W 282.42'	N = 221244.9746	E = 568506.7596
32	IRON PIN FOUND	S 85°37'27" E 403.46'	E = 567162.2835	87	RAILROAD SPIKE SET S 3°57'16" W 2149.57'	N = 220591.3441	E = 568461.5767
33	DRILL HOLE IN CONC. FENCE POST BASE	N 83°12'12" E 127.45'	E = 567200.8378	88	RAIL FOUND N 86°45'22" W 2345.81'	N = 220631.8031	E = 567747.7184
34	IRON PIN FOUND	S 85°39'30" E 239.12'	E = 567273.5127	89	IRON PIN SET N 86°13'15" W 1782.20'	N = 220667.6080	E = 567205.6825
35	RAILROAD SPIKE SET	S 4°06'16" W 48.48'	E = 567272.4551	90	CONCRETE MONUMENT FOUND N 4°57'57" E 1280.12'	N = 221056.3239	E = 567239.4567
36	IRON PIN FOUND	S 86°16'07" E 1348.19'	E = 567682.5142	91	IRON PIN SET N 86°14'46" W 640.15'	N = 221069.0981	E = 567044.7586
37	IRON PIN SET	S 70°01'06" E 164.27'	E = 567729.5701	92	UGSS CONCRETE MONUMENT FOUND N 4°56'47" E 800.65'	N = 221312.2273	E = 567065.8004
38	IRON PIN SET	S 2°43'22" W 218.02'	E = 567726.4132	93	RAILROAD SPIKE SET N 85°32'04" W 2346.20'	N = 221367.9068	E = 566352.8467
39	IRON PIN SET	S 86°16'11" E 206.42'	E = 567789.1968	94	RAILROAD SPIKE SET S 44°15'56" W 325.10'	N = 221296.9474	E = 566283.6837
40	IRON PIN FOUND	N 2°43'22" E 157.53'	E = 567791.4778	95	IRON PIN SET N 85°32'13" W 2534.77'	N = 221357.0673	E = 565513.4284
41	IRON PIN FOUND	S 80°44'28" E 264.22'	E = 567870.9615	96	IRON PIN FOUND S 4°32'08" W 133.69'	N = 221316.4461	E = 565510.2062
42	IRON PIN SET	S 65°53'21" E 930.90'	E = 568129.9458	97	IRON PIN FOUND S 4°41'08" W 755.58'	N = 221086.9144	E = 565491.3938
43	IRON PIN SET	S 23°49'50" W 140.90'	E = 568112.5339	98	IRON PIN FOUND N 86°22'34" W 733.43'	N = 221101.0442	E = 565268.2918
44	IRON PIN SET	S 59°11'49" W 267.56'	E = 568042.5406	99	IRON PIN FOUND N 85°47'57" W 943.55'	N = 221122.1121	E = 564981.4693
45	IRON PIN SET	S 35°01'41" W 184.70'	E = 568010.2279	100	IRON PIN SET OVER R.R.S. FOUND N 85°26'59" W 1038.67'	N = 221147.2286	E = 564665.8804
46	IRON PIN SET	S 4°53'07" E 156.46'	E = 568014.2892	101	RAILROAD SPIKE FOUND S 6°14'05" W 287.02'	N = 221060.2616	E = 564656.3794
47	IRON PIN SET	S 3°30'00" W 168.00'	E = 568011.1631	102	IRON PIN FOUND N 86°27'54" W 905.87'	N = 221077.2865	E = 564380.7964
48	IRON PIN SET	S 8°50'00" E 128.00'	E = 568017.1542	103	IRON PIN SET N 3°51'35" E 579.20'	N = 221253.4255	E = 564392.6802
49	IRON PIN SET	S 14°45'00" E 218.00'	E = 568034.0716	104	IRON PIN SET N 86°21'44" W 167.13'	N = 221256.6577	E = 564341.8405
50	IRON PIN SET	S 23°00'00" E 316.00'	E = 568071.7056	105	IRON PIN SET N 4°33'36" E 502.13'	N = 221409.2227	E = 564354.0084
51	IRON PIN SET	S 25°50'00" E 337.00'	E = 568116.4654	106	IRON PIN SET S 85°26'24" E 1082.12'	N = 221383.0002	E = 564682.7945
52	IRON PIN SET	S 38°30'00" E 164.00'	E = 568147.5833	107	IRON PIN FOUND N 4°06'12" E 514.82'	N = 221539.5162	E = 564694.0229
53	IRON PIN SET	S 51°00'00" E 200.00'	E = 568194.9582	108	RAILROAD SPIKE FOUND N 4°27'01" E 2422.14'	N = 222275.5597	E = 564751.3066
54	IRON PIN SET	S 68°20'00" E 145.00'	E = 568236.0317	1	RAILROAD SPIKE SET N 4°00'14" E 1453.89'	N = 222717.6251	E = 564782.2488
55	IRON PIN SET	S 81°40'00" E 145.00'	E = 568279.7611				

(END BOUNDARY COURSES)

1758.091 ACRES (INCLUDING PET CEMETERY - 3.048 AC.)

PT #	MONUMENTATION TYPE	NORTHING (M)	EASTING (M)
AIRPORT BOUNDARY REFERENCE MONUMENTS			
109	IRON PIN FOUND (ON LINE 1 - 2)	N = 222720.9756	E = 564802.3444
110	IP FND @ CL PRUSHING AVE	N = 223174.6519	E = 565689.8044
111	IRON PIN FOUND (ON LINE 23 - 24)	N = 222809.0618	E = 566856.1137
112	IRON PIN FOUND (ON LINE 23 - 24)	N = 222795.5660	E = 567032.3370
113	IRON PIN FOUND (ON LINE 25 - 26)	N = 222850.6254	E = 566632.7225
114	IRON PIN FOUND (ON LINE 35 - 36)	N = 222910.9109	E = 567496.4228
115	IRON PIN SET (ON LINE 83 - 84)	N = 221224.2229	E = 569140.4282
116	CONCRETE MONUMENT FOUND(ON LINE 89-90)	N = 220699.1251	E = 567208.4210
117	IRON PIN FOUND (ON LINE 98 - 99)	N = 221101.2220	E = 565265.8706
118	IRON PIN FOUND (BENT S 0.23' / W 0.09')N	N = 221145.5921	E = 564685.5912
119	IRON PIN FOUND (ON LINE 101 - 102)	N = 221061.2017	E = 564641.1618
TRAVERSE			
PT #	MONUMENTATION TYPE	NORTHING (M)	EASTING (M)
A	RAILROAD SPIKE SET	N = 222709.1310	E = 564778.2505
B	CONCRETE MONUMENT SET	S 87°04'47" E 1541.38'	N = 222685.1957
C	CONCRETE MONUMENT SET	S 88°23'56" E 1384.08'	N = 222673.4082
D	CONCRETE MONUMENT SET	S 13°04'53" E 1626.95'	N = 223156.4360
E	FRA. CO. NAD 83 CONC. MONUMENT FND. (FRANK 65)	S 81°08'13" E 2658.62'	N = 223031.5831
F	FRA. CO. NAD 83 CONC. MONUMENT FND. (FRANK 165)	S 85°52'48" E 2879.70'	N = 222968.5220
G	CONCRETE MONUMENT SET	S 76°21'09" E 2025.97'	N = 222822.8189
H	CONCRETE MONUMENT SET	S 39°13'59" W 425.85'	N = 222722.2781
I	CONCRETE MONUMENT SET	S 3°29'23" W 479.96'	N = 222576.2585
J	CONCRETE MONUMENT SET	S 14°15'08" E 441.78'	N = 222445.7490
K	CONCRETE MONUMENT SET	S 8°09'00" E 483.66'	N = 222299.8187
L	CONCRETE MONUMENT SET	S 41°42'10" E 710.64'	N = 222138.1006
M	CONCRETE MONUMENT SET	S 22°09'33" W 527.53'	N = 221989.1845
N	RAILROAD SPIKE SET	S 37°21'01" E 561.36'	N = 221853.1672
O	CONCRETE MONUMENT SET	S 83°51'50" E 625.68'	N = 221832.7828
P	CONCRETE MONUMENT SET	S 45°20'40" E 969.02'	N = 221625.1929
Q	CONCRETE MONUMENT SET	S 88°58'16" E 1404.42'	N = 221617.5064
R	CONCRETE MONUMENT SET	S 74°59'48" E 1367.16'	N = 221509.6311
S	CONCRETE MONUMENT SET	S 47°10'28" W 792.94'	N = 221345.3380
T	CONCRETE MONUMENT SET	S 73°53'39" W 2569.05'	N = 221128.1093
U	CONCRETE MONUMENT SET	S 16°58'02" W 1754.48'	N = 220616.6208
V	CONCRETE MONUMENT SET	N 85°45'29" W 1675.41'	N = 220654.3938
W	CONCRETE MONUMENT SET	N 87°37'54" W 2021.74'	N = 220679.8585
X	CONCRETE MONUMENT FOUND	N 1°48'45" E 1235.74'	N = 221056.3239
Y	CONCRETE MONUMENT FOUND	N 29°24'01" W 1134.36'	N = 221357.5494
Z	CONCRETE MONUMENT SET	N 85°33'25" W 1699.45'	N = 221397.6774
AA	CONCRETE MONUMENT SET	S 89°45'31" W 1760.88'	N = 221395.4162
BB	CONCRETE MONUMENT SET	N 84°59'12" W 1650.67'	N = 221439.3830
CC	CONCRETE MONUMENT SET	S 7°26'33" W 1401.02'	N = 221209.5773
DD	IRON PIN SET OVER R.R.S. FOUND	S 82°44'32" W 1619.17'	N = 221147.2286
EE	CONCRETE MONUMENT SET	S 3°54'06" W 250.54'	N = 221071.0410
FF	CONCRETE MONUMENT SET	N 87°28'52" W 888.42'	N = 221082.9413
GG	CONCRETE MONUMENT SET	N 4°25'16" E 594.58'	N = 221263.6301
HH	CONCRETE MONUMENT SET	N 7°06'45" E 585.15'	N = 221440.6111
II	RAILROAD SPIKE FOUND	N 47°09'05" E 316.67'	N = 221506.2508
JJ	RAILROAD SPIKE SET	N 80°25'04" E 655.64'	N = 221539.5162
KK	RAILROAD SPIKE SET	N 3°03'31" E 1654.98'	N = 222043.2380
LL	RAILROAD SPIKE FOUND	N 6°20'10" E 1134.54'	N = 222386.9339
MM	RAILROAD SPIKE SET	N 3°24'04" E 1058.94'	N = 222709.1310

NOTE: TRAVERSE CLOSURE, BEFORE ADJUSTMENT, WAS 1 : 264,820

MISC. MONUMENTS

PT #	MONUMENTATION TYPE	NORTHING (M)	EASTING (M)
NAD 83 MONUMENTS			
152	CONCRETE MONUMENT FND. (C.O.C. 40-82)	N = 222763.6346	E = 564765.0103
E	CONCRETE MONUMENT FND. (FRANK 65)	N = 223031.5831	E = 566582.0769
F	CONCRETE MONUMENT FND. (FRANK 165)	N = 222968.5219	E = 567457.5300
HAMILTON ROAD MONUMENTS			
153	CENTERLINE MONUMENT FOUND STA. 44+00	N = 222664.1937	E = 568605.5638
154	CENTERLINE MONUMENT FOUND STA. 38+00	N = 222481.8199	E = 568592.3112
155	CENTERLINE MONUMENT FOUND STA. 13+00	N = 221722.0060	E = 568537.0796
156	P.K. NAIL FOUND STA. 9+32.57	N = 221810.3351	E = 568528.9602
157	I.P		