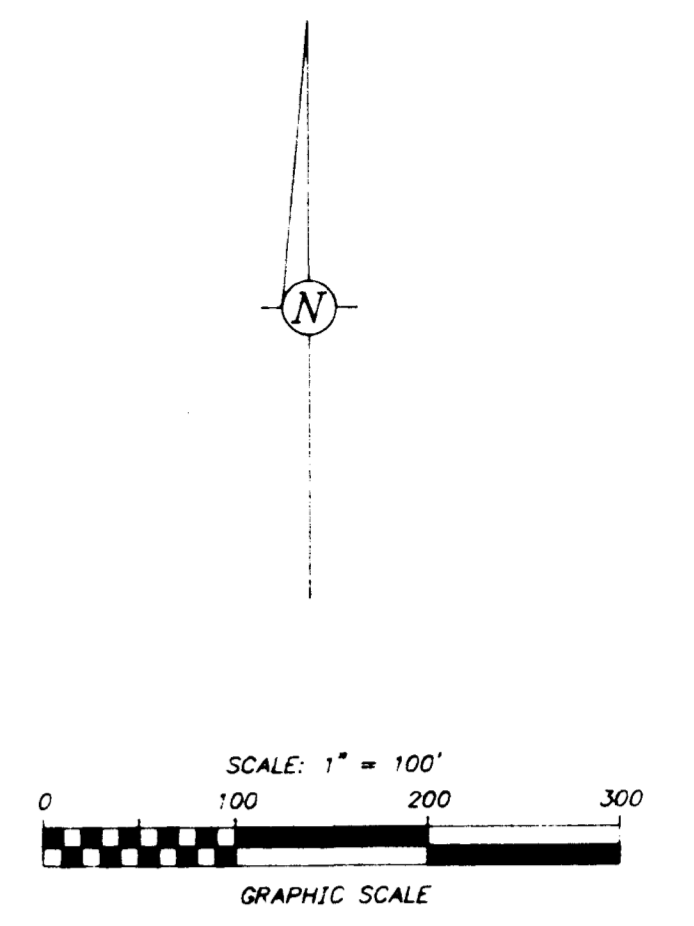


SCALE: 1" = 20'



BASIS OF BEARINGS:
A bearing of S 2° 07' 04" W was used on the centerline of Cassidy Avenue as called for in the deed for the 36.019 acre tract and all other bearings calculated from this meridian.

QUEENSWOOD SUBDIVISION
P.B. 42, Pg. 124

EAGLE GRADING & EXCAVATING, INC.
2.47 Ac.
D.B. 3533, Pg. 211

JEFFREY A. & KAREN M. KOBUNSKI
13.267 Ac.
O.R. 7874, Pg. C 10

BERNARD T. BRADFIELD
1.761 Ac.
D.B. 3111, Pg. 563

IRMA L. ACKLEY
0.89 Ac.
D.B. 2640, Pg. 669

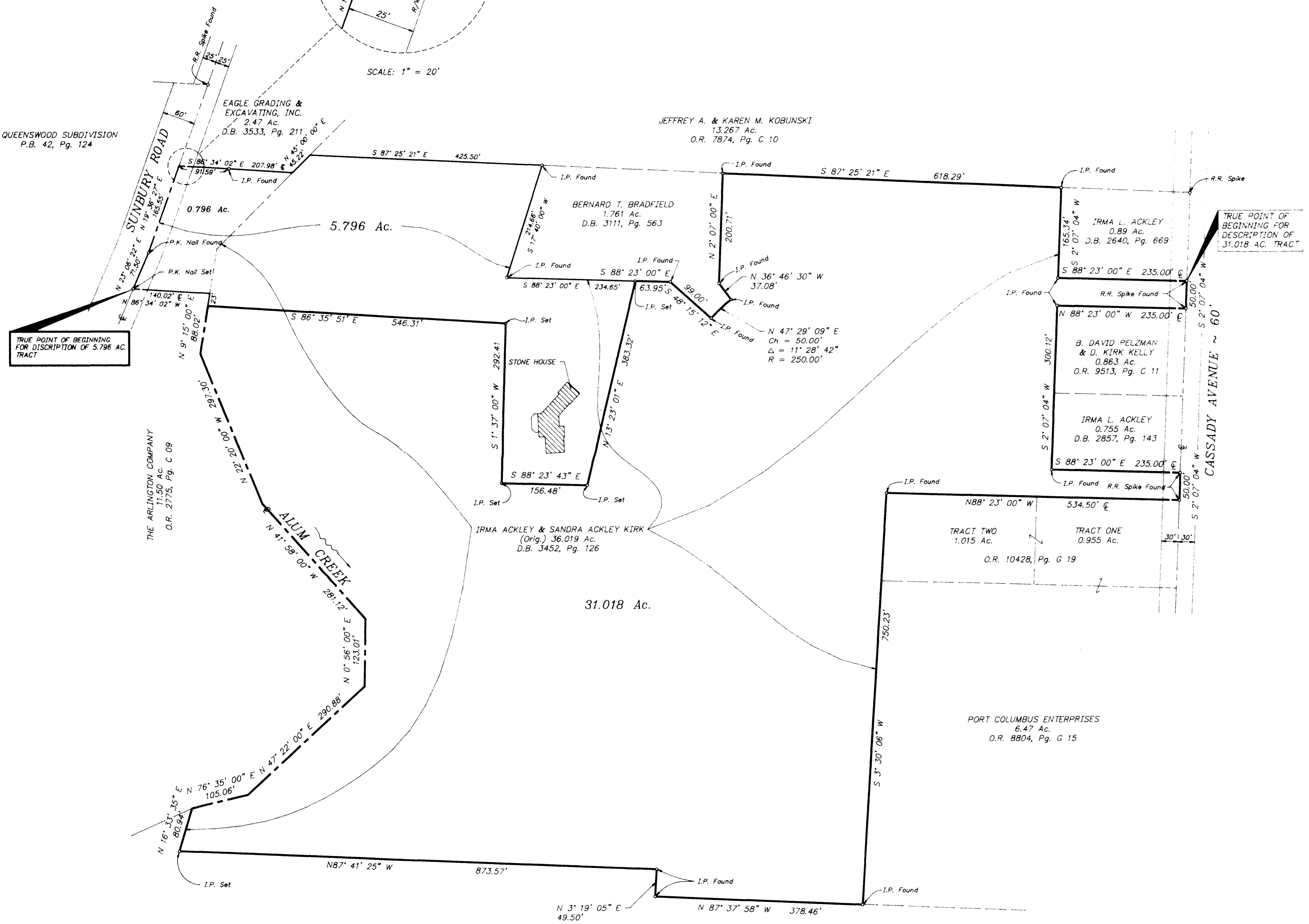
B. DAVID PELZMAN & D. KIRK KELLY
0.863 Ac.
O.R. 9513, Pg. C 11

IRMA L. ACKLEY
0.755 Ac.
D.B. 2857, Pg. 143

IRMA ACKLEY & SANDRA ACKLEY KIRK
(Orig.) 36.019 Ac.
D.B. 3452, Pg. 126

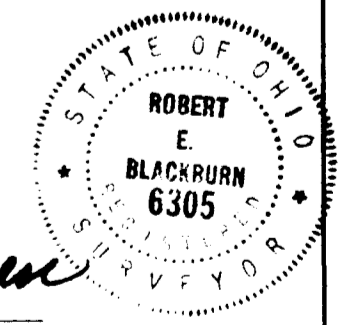
PORT COLUMBUS ENTERPRISES
6.47 Ac.
O.R. 8804, Pg. G 15

PORT COLUMBUS ENTERPRISES
Original 40.159 Ac.
O.R. 8336, Pg. A 13



TRUE POINT OF BEGINNING FOR DESCRIPTION OF 5.796 AC. TRACT

TRUE POINT OF BEGINNING FOR DESCRIPTION OF 31.018 AC. TRACT



Robert E. Blackburn
Robert E. Blackburn - Ohio Surveyor No. 6305

C.F. BIRD & R.J. BULL, INC. ENGINEERS / SURVEYORS		2875 W. DUBLIN - GRANVILLE RD. NORTHWESTON, OHIO
IRMA ACKLEY & SANDRA ACKLEY KIRK (D.B. 3452, Pg. 126)		
PROPERTY MAP 2125 ACKLEY PLACE FRANKLIN COUNTY, OHIO		
36.814 Ac. in Qtr. Twp. 3, R. 17 N., U.S.M.L.		
SCALE: 1" = 100'	DWN:HEB	CKD:REB
12-26-89	89-502	1

REVISED: 1-26-91
REVISED: 1-26-91
REVISED: 2-26-90
REVISED: 12-28-89

KIRKBN