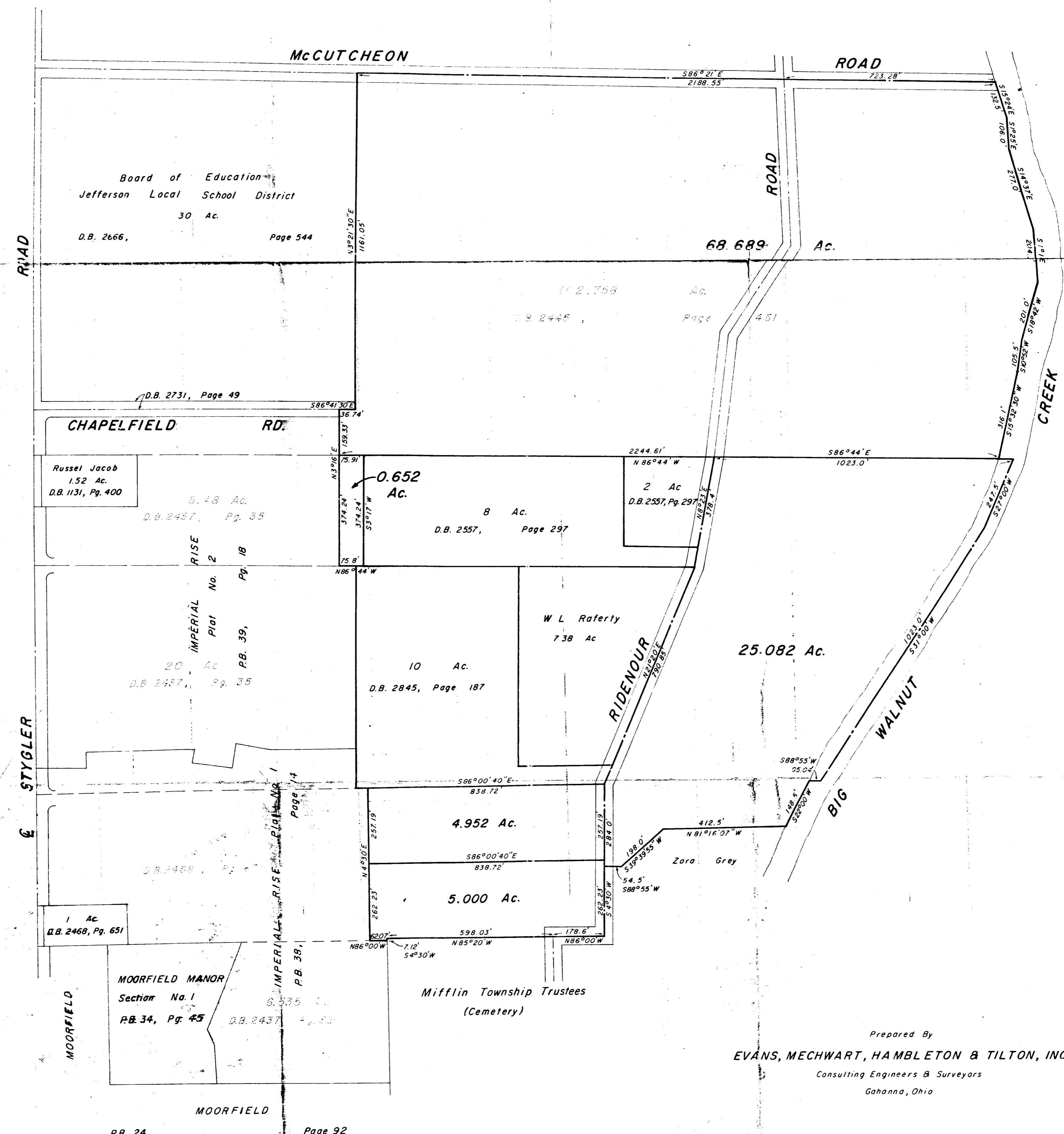


PLAT OF ACREAGE PARCELS

Located in Section 1, Township 1, Range 17

United States Military Lands

Village of Gahanna, Franklin County, Ohio



Prepared By
EVANS, MECHWART, HAMBLETON & TILTON, INC.
 Consulting Engineers & Surveyors
 Gahanna, Ohio

Scale: 1" = 200'
 April 14, 1970
 Revised July 22, 1970
 Revised Dec. 14, 1970

375d 120 056 031 W 264 ER RD 1970 0578 030