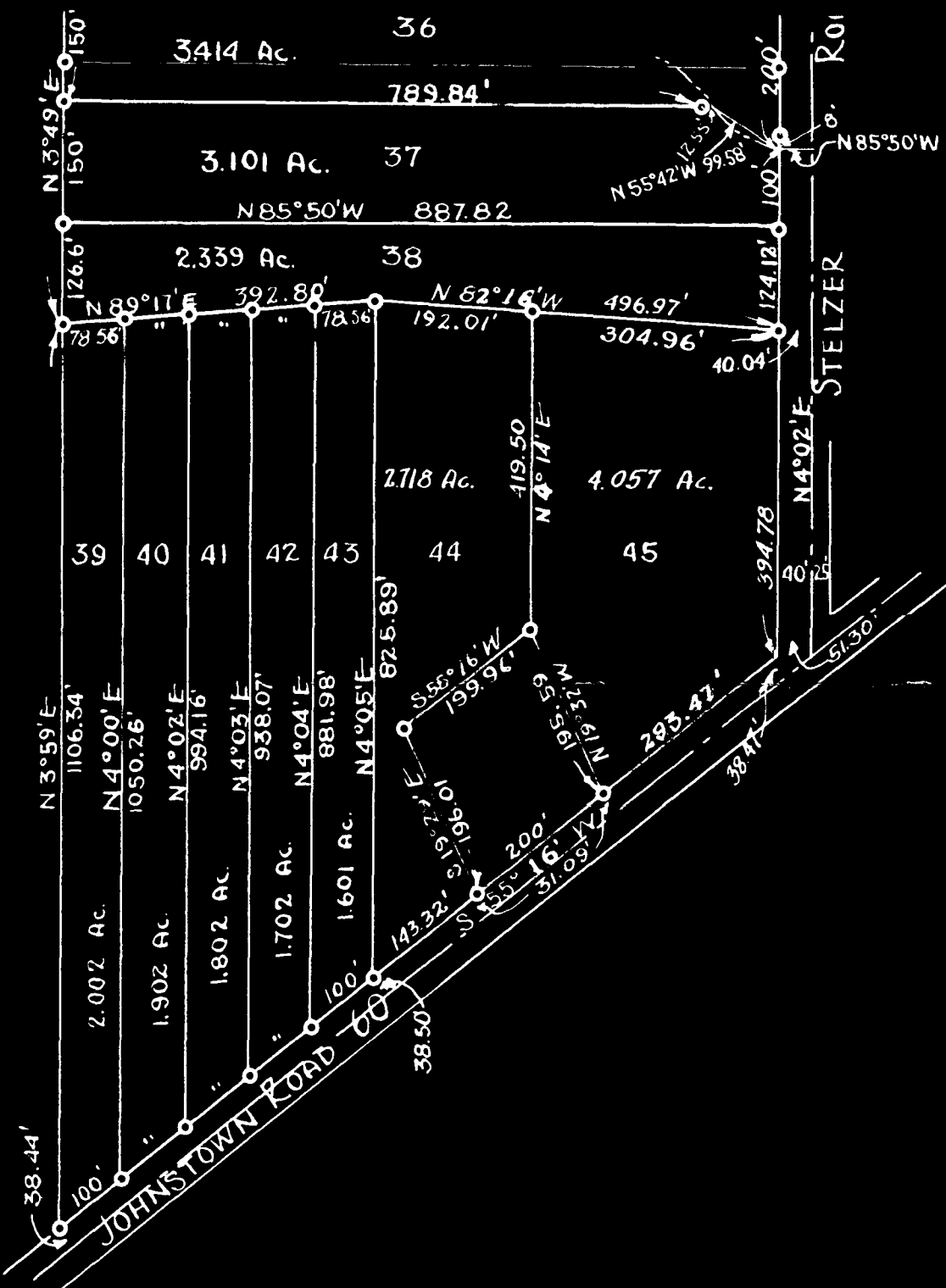


2512 120 004 086 N 36 1 W 5 2 0 1 A B

1948 0584 003



Revised: January 24, 1948. KAISER'S PARCELS - (SECOND SURVEY)  
 MIFFLIN TOWNSHIP, FRANKLIN COUNTY, OHIO  
 Scale 1" = 200' October, 1946.  
 Order No. 7589

THE THOMAS ENGINEERING & SURVEYING COMPANY,  
 3203 West Broad Street, Columbus 4, Ohio  
 Registered Engineer & Surveyor.