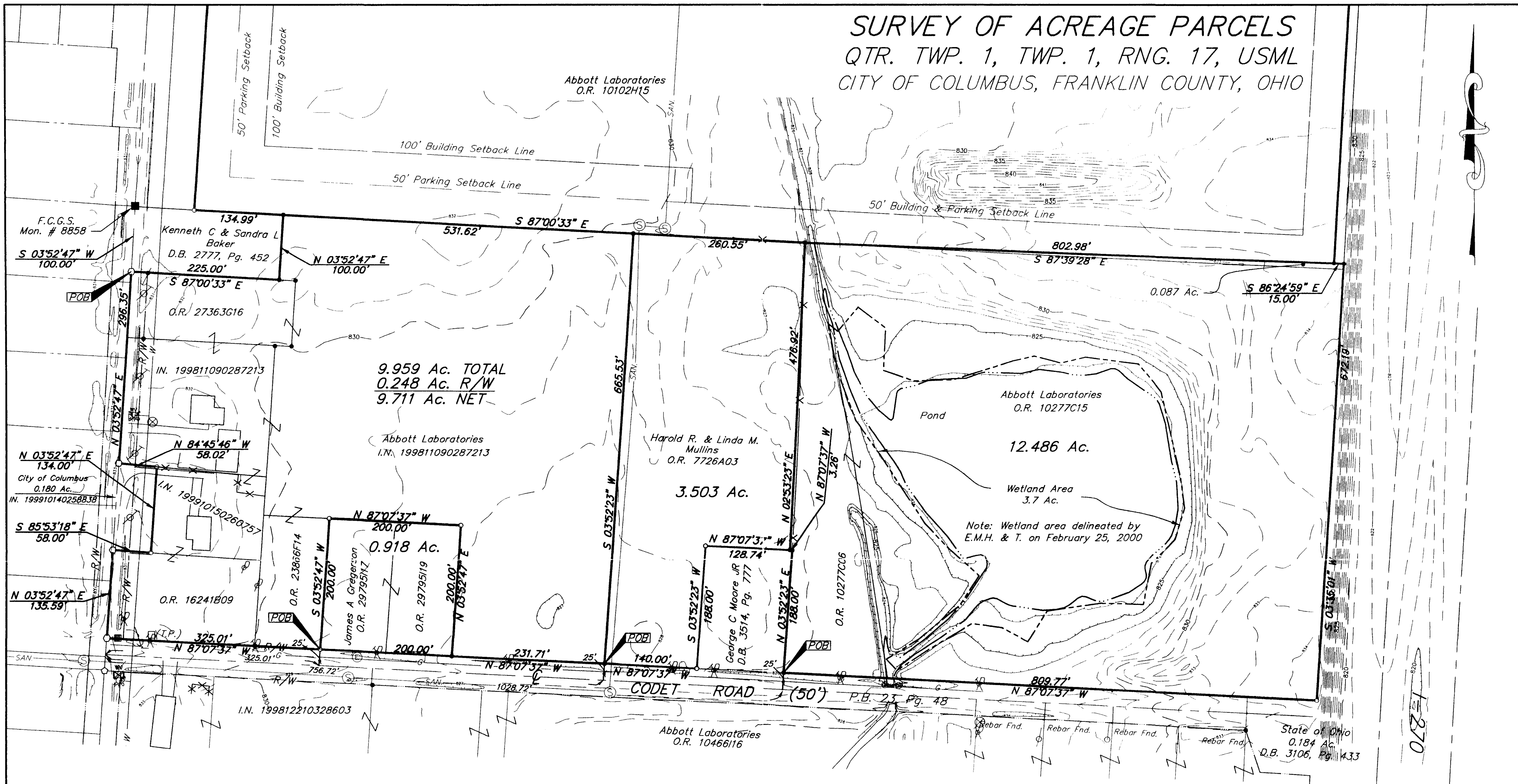


# SURVEY OF ACREAGE PARCELS

## QTR. TWP. 1, TWP. 1, RNG. 17, USML

### CITY OF COLUMBUS, FRANKLIN COUNTY, OHIO



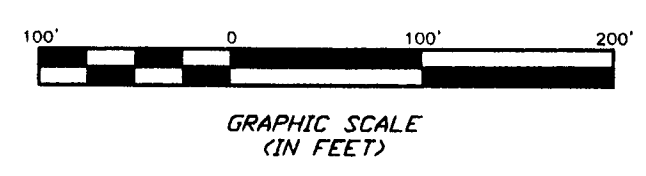
9.959 Ac. TOTAL  
0.248 Ac. R/W  
9.711 Ac. NET

12.486 Ac.

Wetland Area  
3.7 Ac.

Note: Wetland area delineated by  
E.M.H. & T. on February 25, 2000

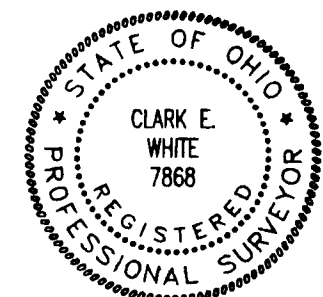
According to the Federal Emergency Management Agency's Flood Insurance Rate Map (dated August 2, 1995), the subject parcel shown hereon lies within Zone X (areas determined to be outside 500-year flood plain), Community Panel No. 39049C0170G



- = I.P. FND.
  - = I.P. SET
  - = MAG. NAIL FND.
  - = MAG. NAIL SET
  - ▲ = R.R. SPK. FND.
  - △ = R.R. SPK. SET
  - = P.K. NAIL FND.
- I.P.S Set are 13/16" I.D. Iron pipe w/ cap inscribed EMH&T.

LEGEND			
↓	= Guy Wire	— W —	= Water Line
⊗	= Utility Pole	— G —	= Gas Line
⊕	= Power Pole	— STM —	= Storm Line
⊙	= Telephone Pole	⊙	= Storm Manhole
⊗	= Gas Marker	⊙	= Sanitary Manhole
⊗	= Gas Meter	— SAN —	= Sanitary Line
(E.T.) □	= Electric Transformer	— UGE —	= Underground Electric
(T.P.) □	= Telephone Pedestal	— OHE —	= Overhead Electric
w	= Water Well	— UGT —	= Underground Telephone
⊙	= Fire Hydrant	— T —	= Overhead Telephone
WV	= Water Valve	— CATV —	= Cable TV.
⊕	= Catch Basin	—	= Centerline
—+—+—	= Fence	— R/W —	= Right of Way Line

**BASIS OF BEARINGS:** Bearings are based on the Ohio State Plane Coordinate System as per NAD83. Control for bearings was from coordinates of monuments 7778 & 8858, having a bearing of South 03°57'06" West, established by the Franklin County Engineering Department, using Global Positioning System procedures and equipment.



SURVEYED & PREPARED BY  
**EMT INC.**  
CONSULTING ENGINEERS & SURVEYORS  
170 MILL STREET  
GAHANNA, OHIO 43230  
(614) 471-5150

By *Clark E. White*  
Professional Surveyor No. 7868

SCALE: 1" = 100"      AUGUST 7, 2000