

SURVEY OF ACREAGE PARCEL

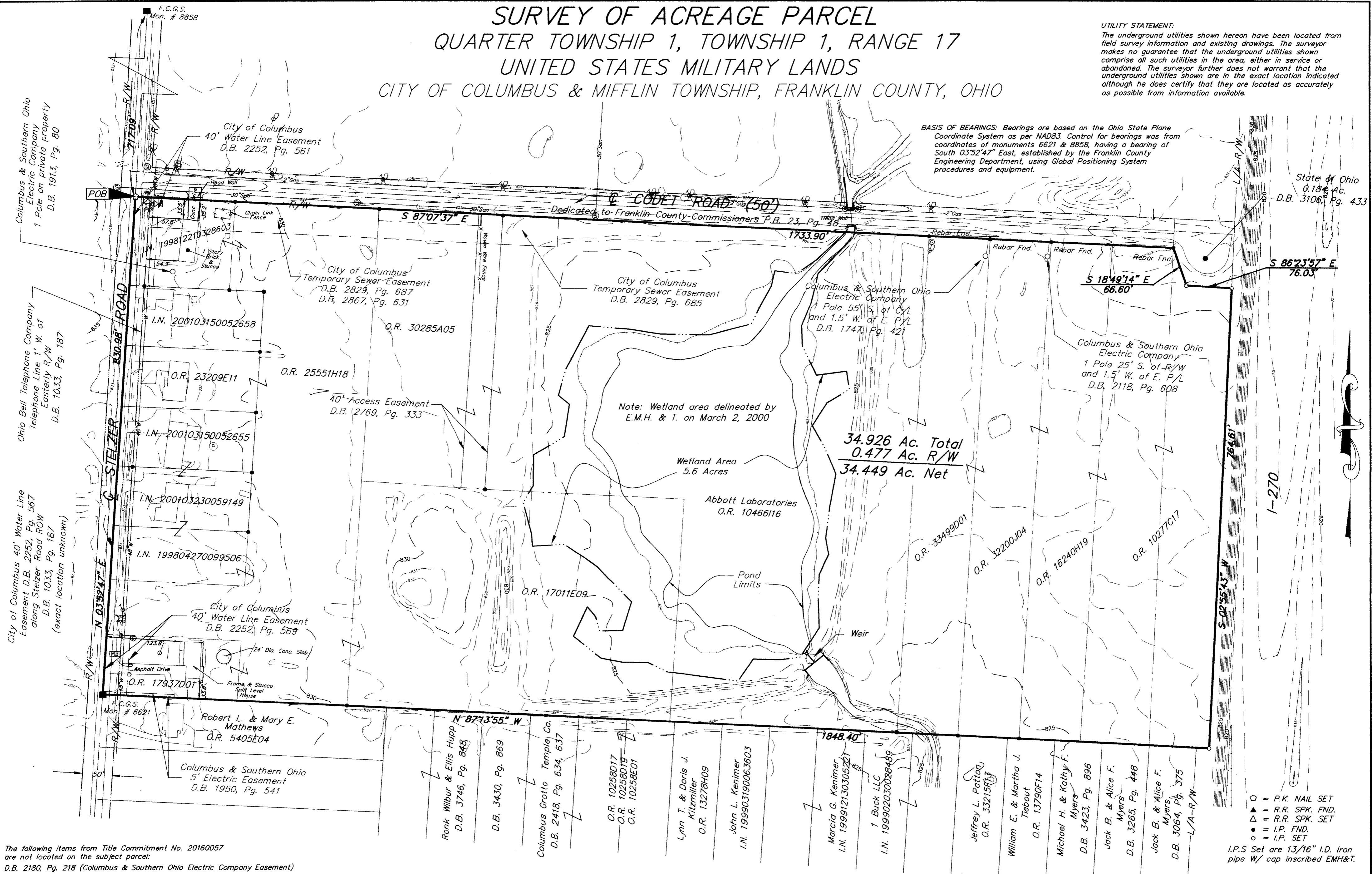
QUARTER TOWNSHIP 1, TOWNSHIP 1, RANGE 17

UNITED STATES MILITARY LANDS

CITY OF COLUMBUS & MIFFLIN TOWNSHIP, FRANKLIN COUNTY, OHIO

UTILITY STATEMENT:
 The underground utilities shown hereon have been located from field survey information and existing drawings. The surveyor makes no guarantee that the underground utilities shown comprise all such utilities in the area, either in service or abandoned. The surveyor further does not warrant that the underground utilities shown are in the exact location indicated although he does certify that they are located as accurately as possible from information available.

BASIS OF BEARINGS: Bearings are based on the Ohio State Plane Coordinate System as per NAD83. Control for bearings was from coordinates of monuments 6621 & 8858, having a bearing of South 03°52'47" East, established by the Franklin County Engineering Department, using Global Positioning System procedures and equipment.



34.926 Ac. Total
0.477 Ac. R/W
34.449 Ac. Net

Note: Wetland area delineated by E.M.H. & T. on March 2, 2000

Wetland Area
5.6 Acres

Abbott Laboratories
O.R. 10466116

Pond Limits

Weir

The following items from Title Commitment No. 20160057 are not located on the subject parcel:
 D.B. 2180, Pg. 218 (Columbus & Southern Ohio Electric Company Easement)

The following items from Title Commitment No. 70160057 apply to the subject parcel:
 D.B. 1735, Pg. 282 (Restrictions of record)

D.B. 1890, Pg. 419 (Ohio Fuel Gas Company Pipe line Easement along Stelzer Road)
 D.B. 2548, Pg. 90 (Assigned to Columbus Gas of Ohio)



LEGEND		
⊕ = Guy Wire & Anchor	⊙ = Gas Marker	⊗ = Water Valve
⊙ = Yard Light	⊕ = Utility Pole	⊙ = Flag Pole
⊙ = Gas Meter	⊙ = Storm Manhole	⊙ = Mail Box
⊗ = Gas Valve	⊙ = Telephone Pole	⊙ = Guy Wire
⊙ = Power Pole	⊙ = Telephone Pedestal	
⊙ = Sanitary Manhole	⊙ = Fire Hydrant	

CERTIFICATION: (Commitment No. 20160057)
 To: Chicago Title Insurance Company and Abbott Laboratories
 This is to certify, to the best of my knowledge and belief, that this map and the survey on which it is based were made in accordance with "Minimum Standard Detail Requirements for ALTA, ACSM and NSPS in 1999; and includes items 1, 3 & 4 of Table A thereof, and pursuant to the Accuracy Standards (as adopted by ALTA and ACSM and in effect on the date of this certification) of an Urban Survey.



Clark E. White
 Professional Surveyor No. 7868

Surveyed & Prepared
 By
EVANS, MECHWART, HAMBLETON & TILTON INC.
 CONSULTING ENGINEERS & SURVEYORS
 170 MILL STREET
 GAHANNA, OHIO 43230
 614/471-5150

SCALE: 1" = 100' APRIL 25, 2001