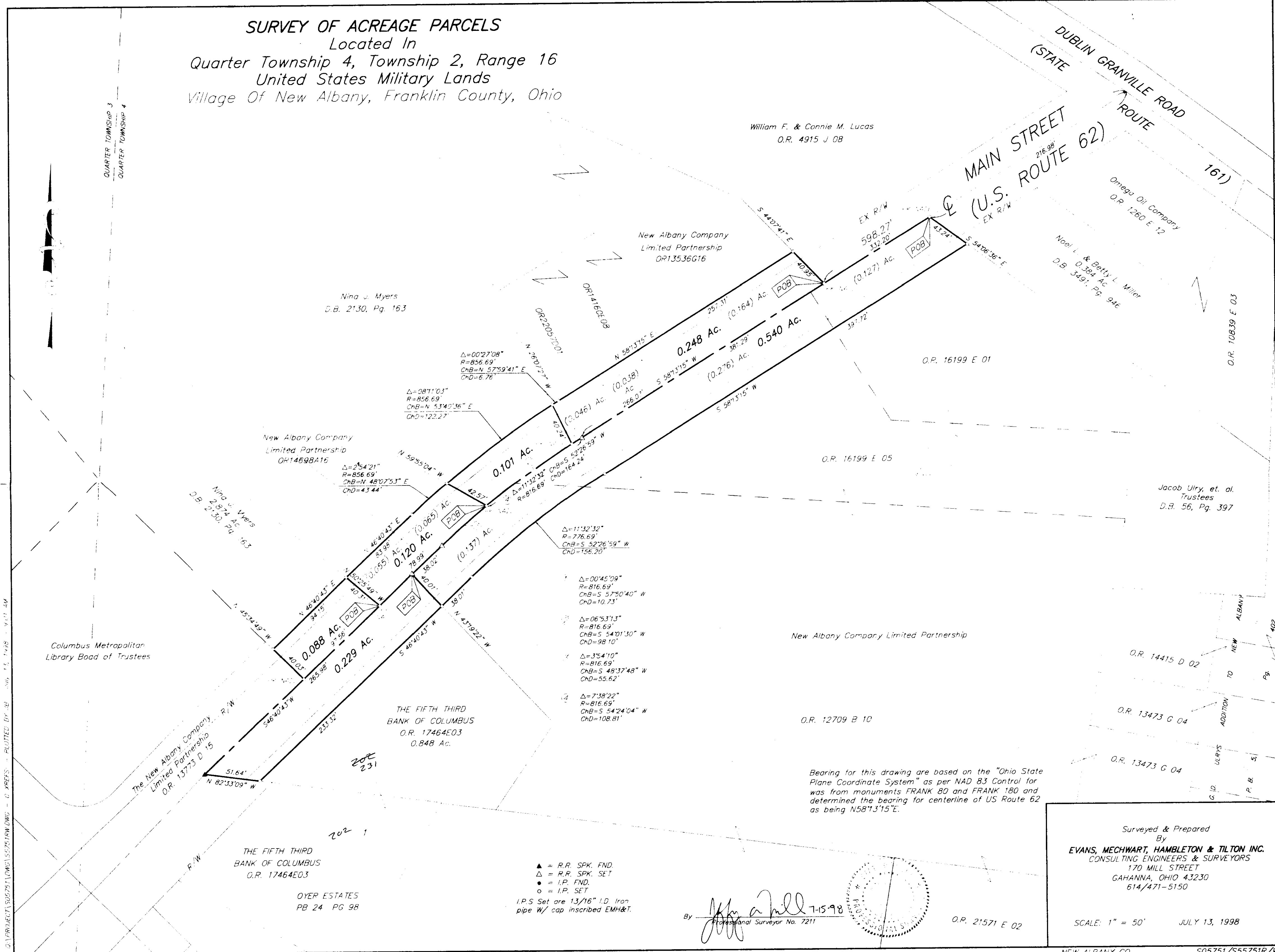


SURVEY OF ACREAGE PARCELS
 Located In
 Quarter Township 4, Township 2, Range 16
 United States Military Lands
 Village Of New Albany, Franklin County, Ohio

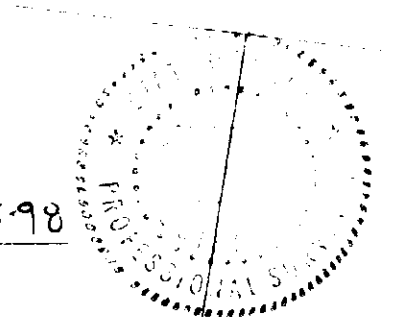


G:\PROJECTS\200751\200751\DWG - C\REFS - ROUTED BY: B... 1.5.1.28... 1.01.4V
 QUARTER TOWNSHIP 3
 QUARTER TOWNSHIP 4

▲ = R.R. SPK. FND.
 △ = R.R. SPK. SET
 ● = I.P. FND.
 ○ = I.P. SET
 I.P.S. Set are 13/16" I.D. Iron pipe W/ cap inscribed EMH&T.

Bearing for this drawing are based on the "Ohio State Plane Coordinate System" as per NAD 83 Control for was from monuments FRANK 80 and FRANK 180 and determined the bearing for centerline of US Route 62 as being N58°13'15"E.

By *John A. Mill* 7-15-98
 Professional Surveyor No. 7211



Surveyed & Prepared By
EVANS, MECHWART, HAMBLETON & TILTON INC.
 CONSULTING ENGINEERS & SURVEYORS
 170 MILL STREET
 GAHANNA, OHIO 43230
 614/471-5150

SCALE: 1" = 50' JULY 13, 1998