

**SURVEY OF 0.822 ACRE TRACT**  
 LOCATED IN THE FOURTH QUARTER OF TOWNSHIP 2, RANGE 16  
 UNITED STATES MILITARY LANDS  
 VILLAGE OF NEW ALBANY, FRANKLIN COUNTY, OHIO

Robert F. & Mary E. Murphy  
 0.288 Ac.  
 D.B. 2583, Pg. 682

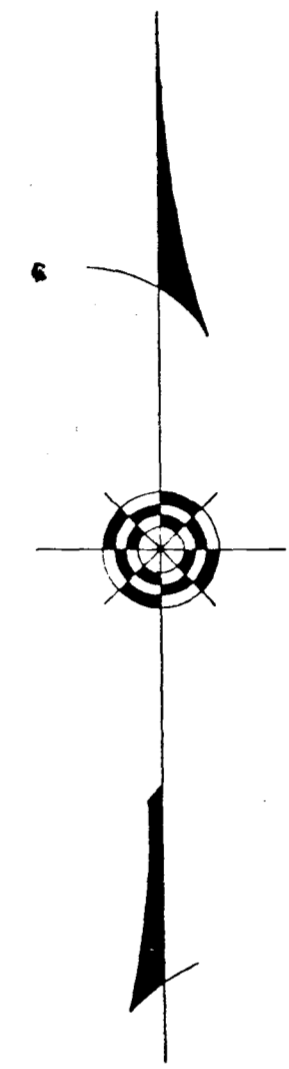
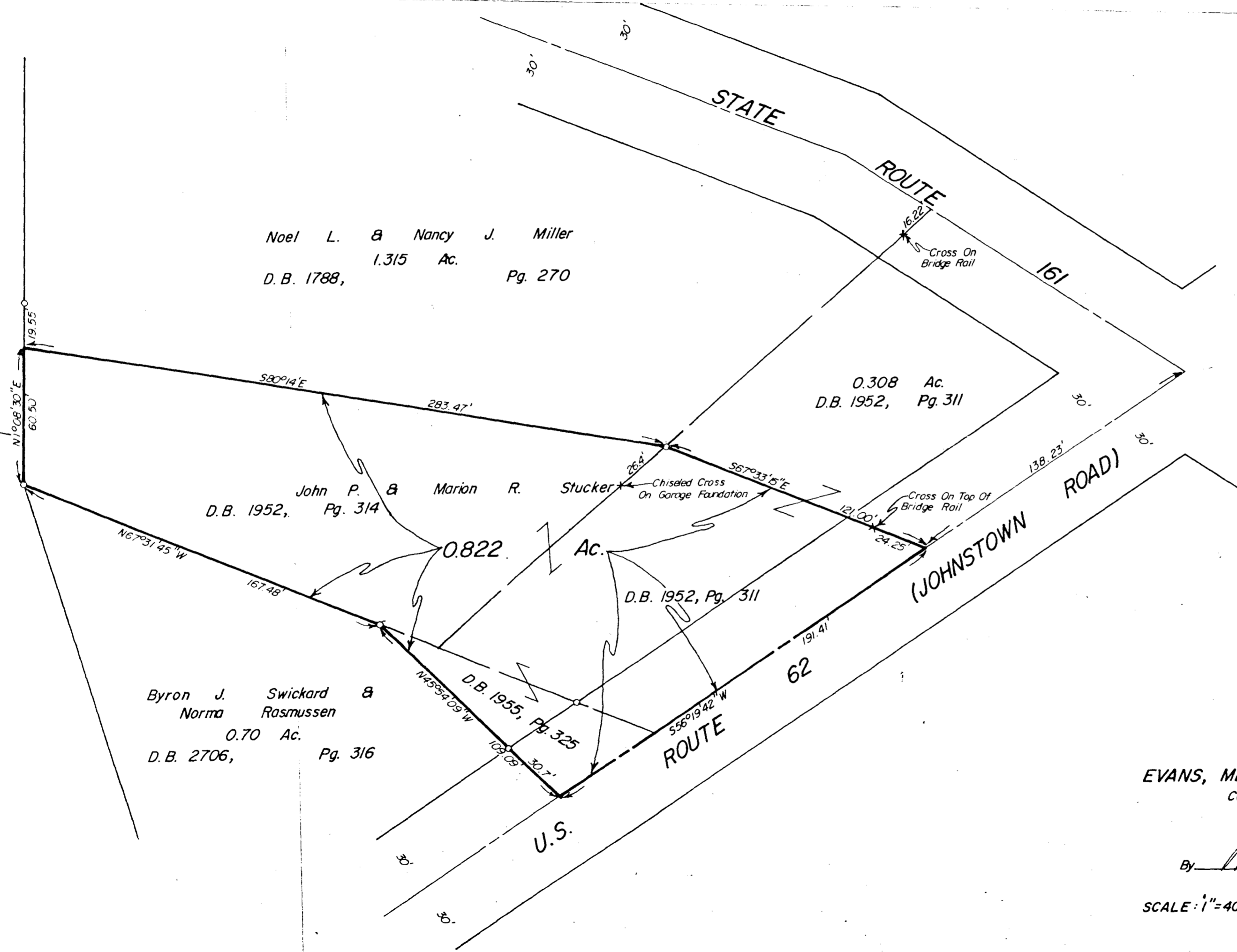
Noel L. & Nancy J. Miller  
 1.315 Ac.  
 D.B. 1788, Pg. 270

0.308 Ac.  
 D.B. 1952, Pg. 311

John P. & Marion R. Stucker  
 0.822 Ac.  
 D.B. 1952, Pg. 314

Byron J. Swickard & Norma Rasmussen  
 0.70 Ac.  
 D.B. 2706, Pg. 316

Niha J. Myers  
 5.634 Ac.  
 D.B. 2130, Pg. 163



SURVEYED & PLATTED  
 BY  
**EVANS, MECHWART, HAMBLETON & TILTON, INC.**  
 CONSULTING ENGINEERS AND SURVEYORS  
 GAHANNA, OHIO

By M. H. Mechwart  
 Registered Surveyor No. 4072

SCALE: 1"=40'

○=IRON PIN

MAY 5, 1976

2516 120 1976 030