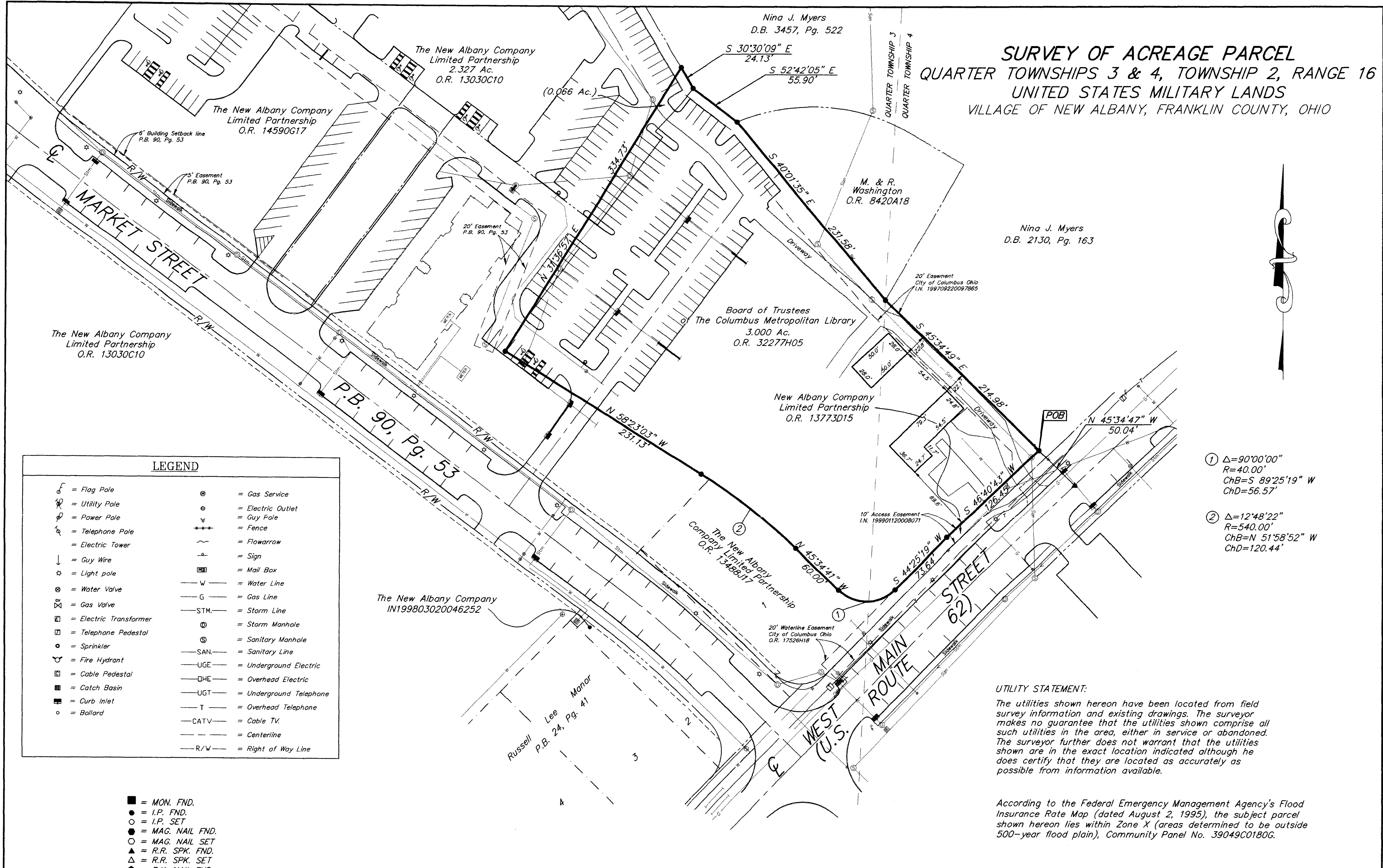


SURVEY OF ACREAGE PARCEL
QUARTER TOWNSHIPS 3 & 4, TOWNSHIP 2, RANGE 16
UNITED STATES MILITARY LANDS
VILLAGE OF NEW ALBANY, FRANKLIN COUNTY, OHIO



LEGEND

	= Flag Pole		= Gas Service
	= Utility Pole		= Electric Outlet
	= Power Pole		= Guy Pole
	= Telephone Pole		= Fence
	= Electric Tower		= Flowarrow
	= Guy Wire		= Sign
	= Light pole		= Mail Box
	= Water Valve		= Water Line
	= Gas Valve		= Gas Line
	= Electric Transformer		= Storm Line
	= Telephone Pedestal		= Storm Manhole
	= Sprinkler		= Sanitary Manhole
	= Fire Hydrant		= Sanitary Line
	= Cable Pedestal		= Underground Electric
	= Catch Basin		= Overhead Electric
	= Curb Inlet		= Underground Telephone
	= Ballard		= Overhead Telephone
			= Cable TV
			= Centerline
			= Right of Way Line

- = MON. FND.
- = I.P. FND.
- = I.P. SET
- = MAG. NAIL FND.
- = MAG. NAIL SET
- ▲ = R.R. SPK. FND.
- △ = R.R. SPK. SET
- ▲ = P.K. NAIL FND.

I.P.S Found are 13/16" I.D. Iron pipe w/ cap inscribed EMH&T, Inc.



GRAPHIC SCALE
(IN FEET)

BASIS OF BEARINGS: Bearings are based on the Ohio State Plane Coordinate System as per NAD83. Control for bearings was from coordinates of monuments Frank 78 and Frank 178, established by the Franklin County Engineering Department, using Global Positioning System procedures and equipment.

Property subject to Conditions & Restrictions contained in Official Record 32277H05.

- ① Δ=90°00'00"
R=40.00'
ChB=S 89°25'19" W
ChD=56.57'
- ② Δ=12°48'22"
R=540.00'
ChB=N 51°58'52" W
ChD=120.44'

UTILITY STATEMENT:

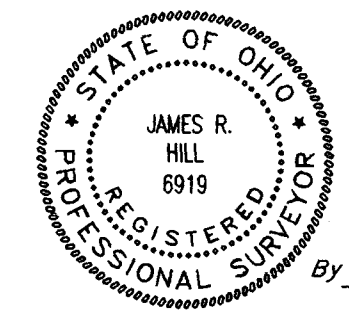
The utilities shown hereon have been located from field survey information and existing drawings. The surveyor makes no guarantee that the utilities shown comprise all such utilities in the area, either in service or abandoned. The surveyor further does not warrant that the utilities shown are in the exact location indicated although he does certify that they are located as accurately as possible from information available.

According to the Federal Emergency Management Agency's Flood Insurance Rate Map (dated August 2, 1995), the subject parcel shown hereon lies within Zone X (areas determined to be outside 500-year flood plain), Community Panel No. 39049C0180G.

CERTIFICATION: (Commitment No. 120012894)

To: Columbus Metropolitan Library and Stewart Title Guaranty Company

This is to certify, to the best of my knowledge, information and belief, that this map and the survey on which it is based were made in accordance with "Minimum Standard Detail Requirements for ALTA /ACSM and NSPS in 1999", and includes items 1, 3, 4, 8, 10, 11(B) & 13 of Table A "Optional Survey Responsibilities & Specification" thereof, and pursuant to the Accuracy Standards as adopted by ALTA, ACSM & NSPS in effect on the date of this certification.



SURVEYED & PREPARED BY
EMH&T INC.
 CONSULTING ENGINEERS & SURVEYORS
 170 MILL STREET
 GAHANNA, OHIO 43230
 (614) 471-5150

By *James R. Hill*
 Professional Surveyor No. 6919

C:\PROJECT\20011368.01\DWG\011368BV2.DWG -- O. XREFS: -- PLOTTED BY JIMACLEAN -- September 27, 2001 -- 1:18 PM