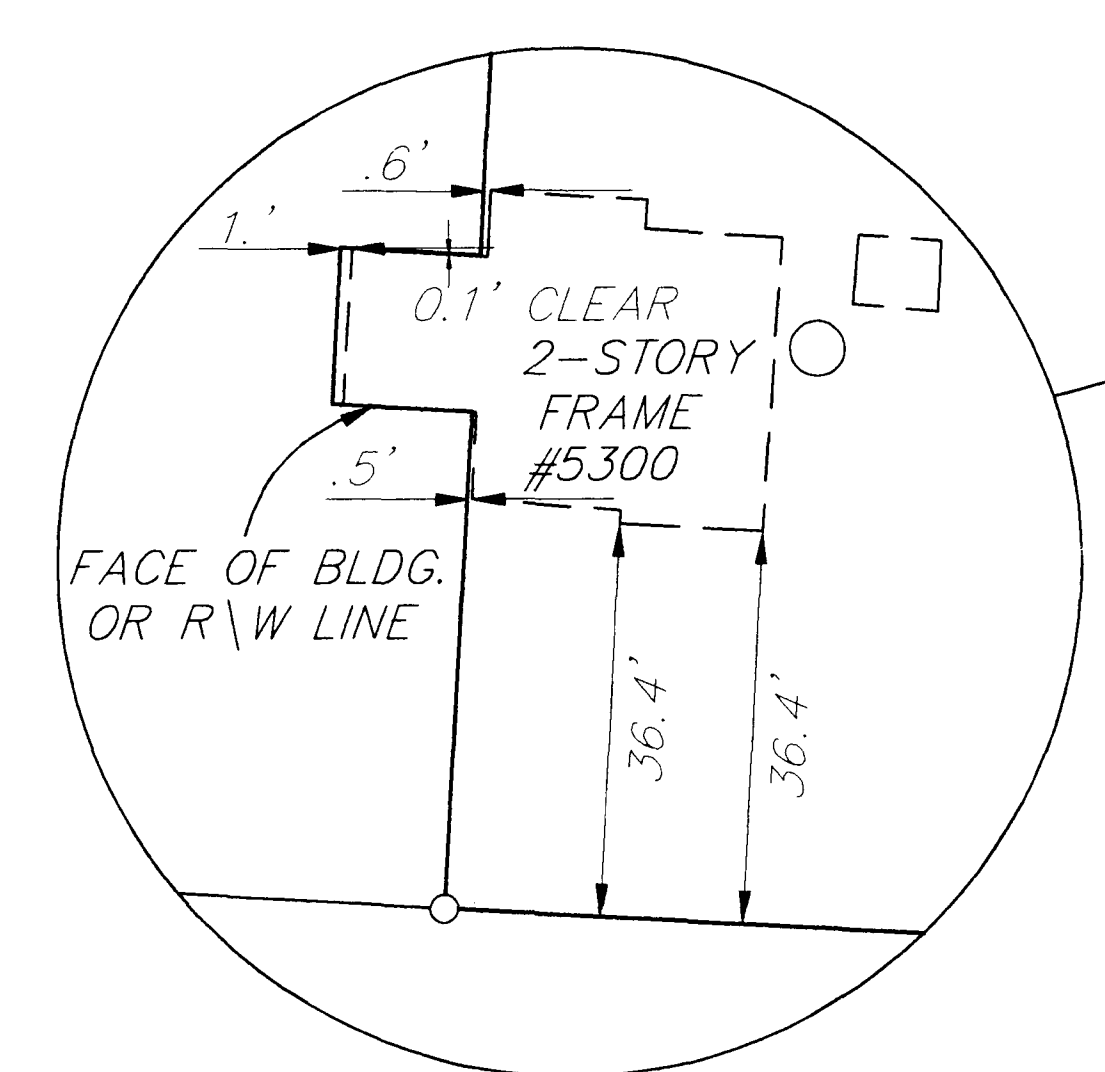
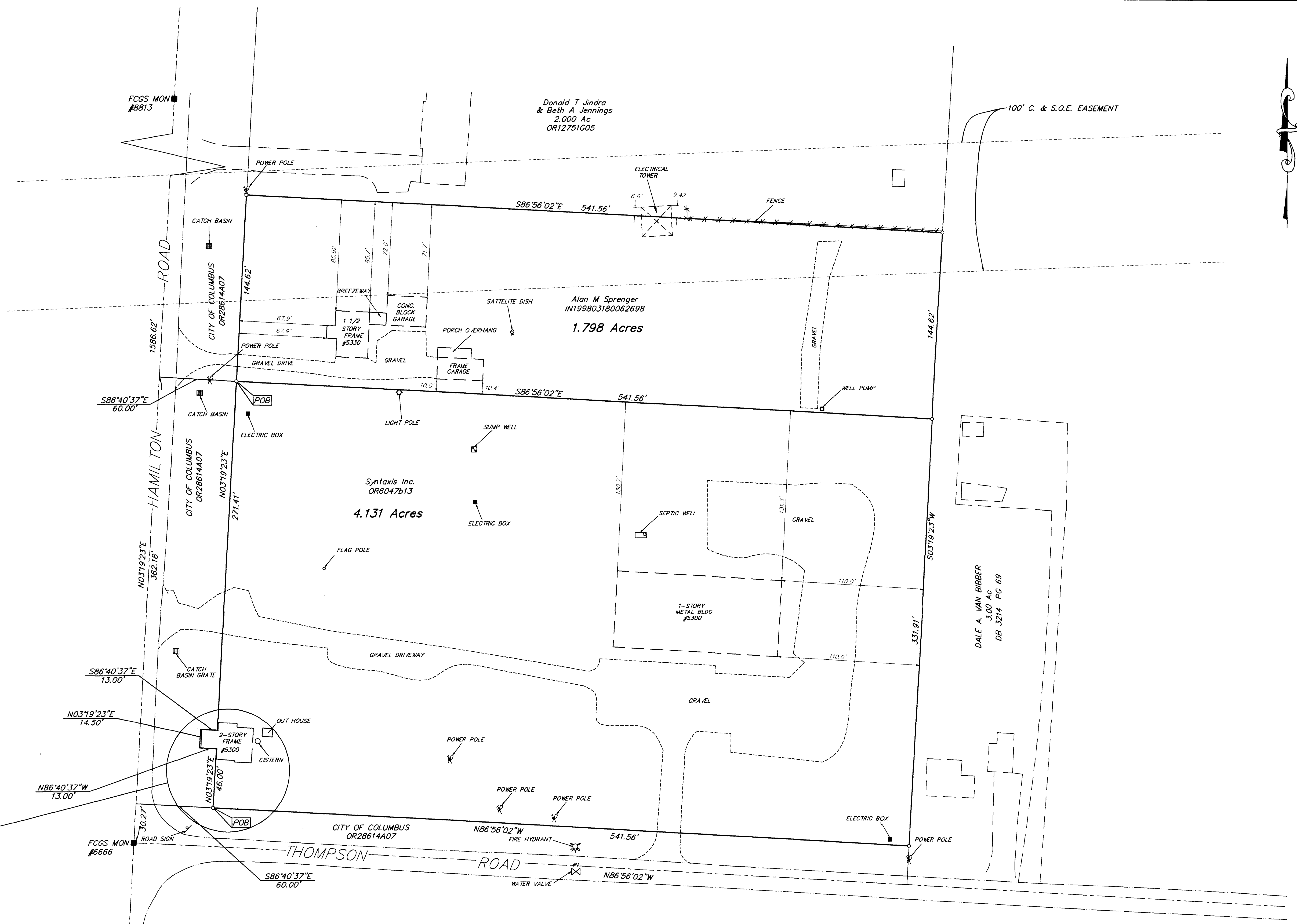


SURVEY OF ACREAGE PARCELS
 QTR TWP 3 TWP 2 RNG 16 USML
 CITY OF COLUMBUS, FRANKLIN COUNTY, OHIO



BUILDING LOCATION DETAIL

The Basis of Bearing on this drawing was transferred from a GPS survey of Franklin County monuments FCGS 6666 and FCGS 8813 performed by the Franklin County Engineer's Office and is based on the NAD 83 Ohio State Plane Coordinate System, South Zone, and determines the centerline of Hamilton Road as being N 319'23" E

To : The New Albany Company Limited Partnership,
 and Stewart Guaranty Title.
 This is to certify that this map and the survey on which it is based were made in accordance with "Minimum Standard Detail Requirements for ALTA/ACSM Land Title Surveys", jointly established and adopted by ALTA and ACSM in 1997.

E.M.H.&T. INC.
 By: *[Signature]* 4-22-98
 Professional Surveyor No. 7211



- ▲ = R.R. SPK. FND.
 - △ = R.R. SPK. SET
 - = I.P. FND.
 - = I.P. SET
- I.P.S. Set are 1 3/16" I.D. Iron pipe w/ cap inscribed EMH&T.

Surveyed & Prepared By
 EVANS, MECHWART, HAMBLETON & TILTON INC.
 CONSULTING ENGINEERS & SURVEYORS
 170 MILL STREET
 GAHANNA, OHIO 43230
 614/471-5150