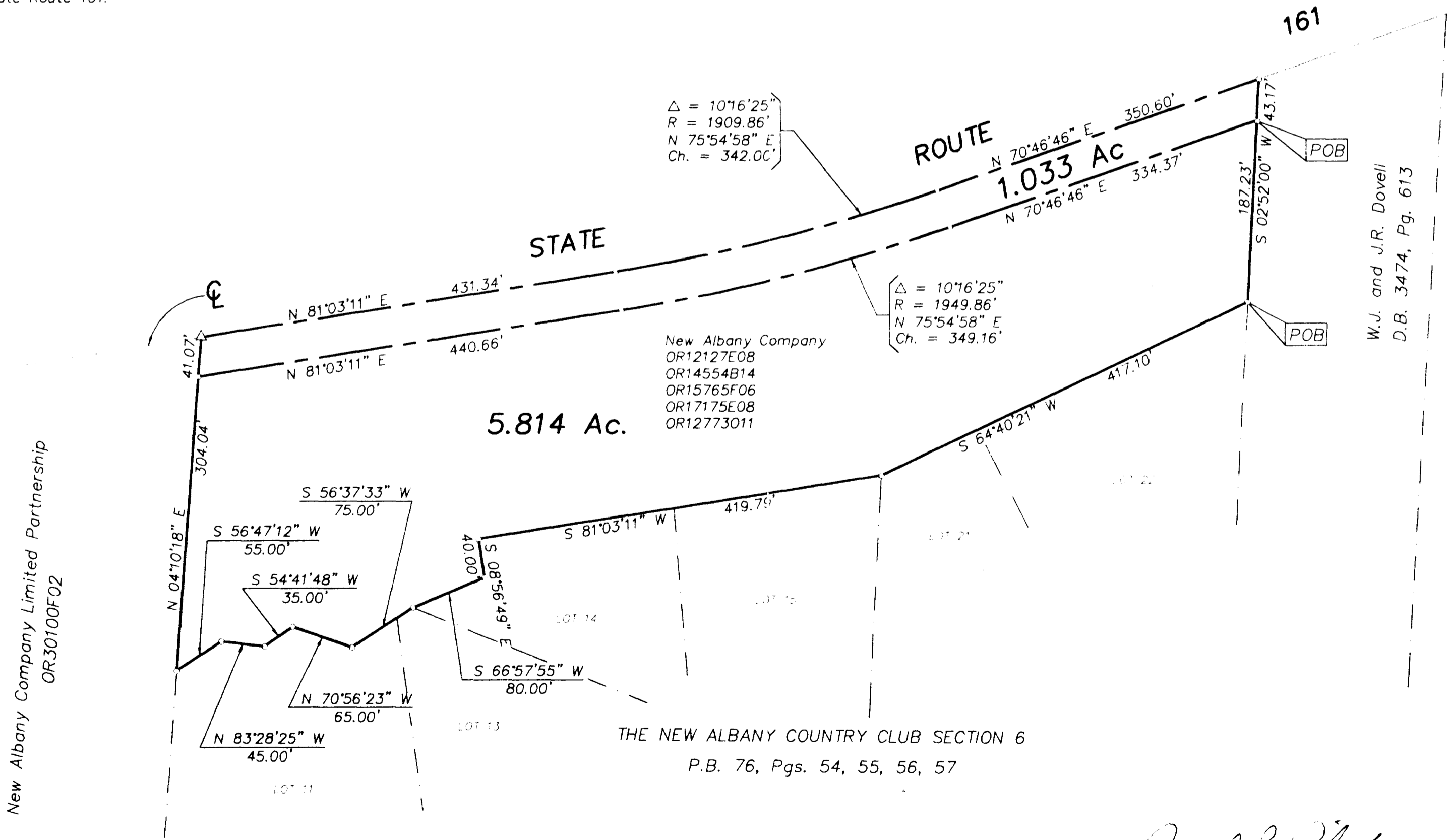


SURVEY OF ACREAGE PARCELS
 Quarter Township 3, Township 2, Range 16
 United States Military Lands
 Village Of New Albany, Franklin County, Ohio



- ▲ R.R. Spk. Fnd.
 - △ R.R. Spk. Set
 - I.P. Fnd.
 - I.P. Set
- I.P. set are 3/4" O.D. Iron Pin
 30" long w/cap inscribed EMH&T.

BASIS OF BEARINGS : The bearings shown on this plat are based on the Ohio State Plane Coordinate System as per NAD83. Control for bearings was from coordinates of monuments established by the Franklin County Engineering Department using Global Positioning System procedures and equipment and Determines a Bearing of N 70° 46' 46" E for a portion of the centerline of Sate Route 161.



New Albany Company Limited Partnership
 OR30100F02

W.J. and J.R. Dovell
 D.B. 3474, Pg. 613

Surveyed & Prepared
 By
EVANS, MECHWART, HAMBLETON & TILTON INC.
 CONSULTING ENGINEERS & SURVEYORS
 170 MILL STREET
 GAHANNA, OHIO 43230
 614/471-5150

By *Donald R. West*
 Professional Surveyor No. 5425

SCALE: 1" = 100' FEBRUARY 4, 1998