

SURVEY OF ACREAGE PARCEL
 QUARTER TOWNSHIP 2, TOWNSHIP 1, RANGE 17
 UNITED STATES MILITARY LANDS
 CITY OF COLUMBUS, FRANKLIN COUNTY, OHIO

Columbus & Southern
 Ohio Electric Company
 5.637 Ac.
 D.B. 3403, Pg. 254

Smyery Capital Co. Ltd.
 I.N. 199905140123044

O.R. 1295,04

D.B. 3791, Pg. 403

George D. & Johanna C. Boston
 D.B. 3791, Pg. 406

Center City Development Corporation
 39.766 Ac.
 I.N. 199906230159903

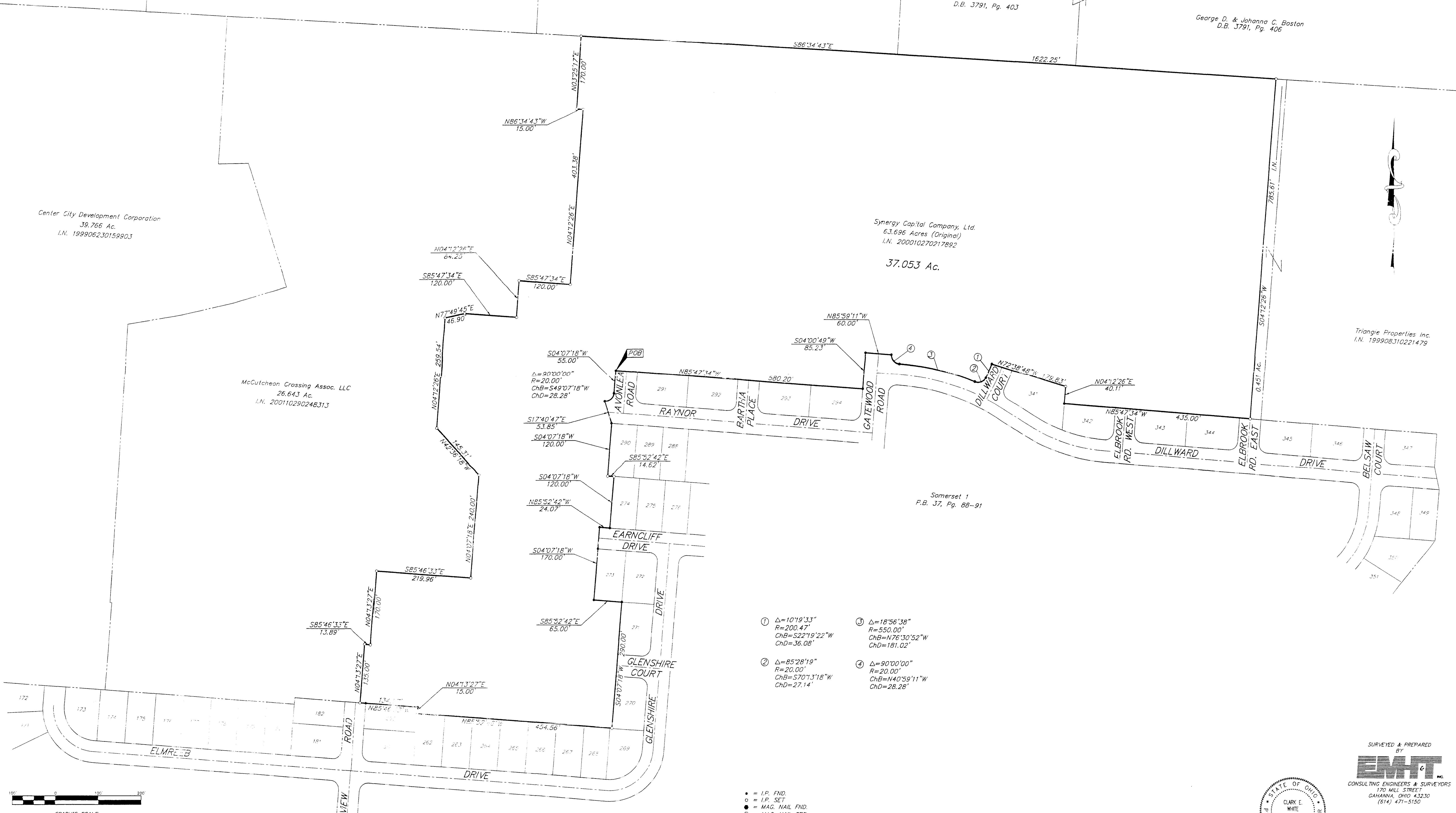
Smyery Capital Company, Ltd.
 63.696 Acres (Original)
 I.N. 200010270217892

37.053 Ac.

McCutcheon Crossing Assoc. LLC
 26.643 Ac.
 I.N. 200110290248313

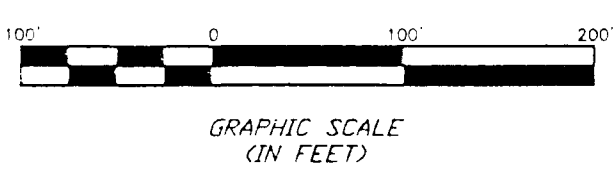
Triangle Properties Inc.
 I.N. 199908310221479

Somerset 1
 P.B. 37, Pg. 88-91

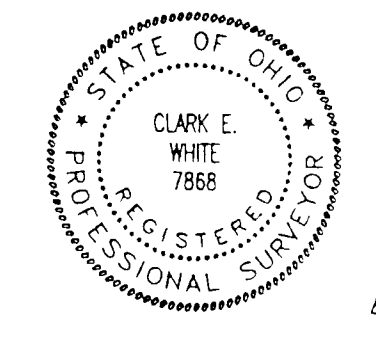


- ① $\Delta=10^{\circ}19'33''$
 $R=200.47'$
 $ChB=S22^{\circ}19'22''W$
 $ChD=36.08'$
- ② $\Delta=85^{\circ}28'19''$
 $R=20.00'$
 $ChB=S70^{\circ}13'18''W$
 $ChD=27.14'$
- ③ $\Delta=18^{\circ}56'38''$
 $R=550.00'$
 $ChB=N76^{\circ}30'52''W$
 $ChD=181.02'$
- ④ $\Delta=90^{\circ}00'00''$
 $R=20.00'$
 $ChB=N40^{\circ}59'11''W$
 $ChD=28.28'$

• = I.P. FND.
 ○ = I.P. SET
 ● = MAG. NAIL FND.
 ○ = MAG. NAIL SET
 ▲ = R.R. SPK. FND.
 △ = R.R. SPK. SET
 ◆ = P.K. NAIL FND.
 I.P.S. Set are 1 3/16" I.D. Iron pipe w/ cap inscribed EMH&T.



MODES OF BEARINGS: Bearings are based on the Ohio State Plane Coordinate System as per NAD83. Control for bearings was from coordinates of monuments 7178 & 6058, having a bearing of North $03^{\circ}57'06''$ East, established by the Franklin County Engineering Department, using Global Positioning System procedures and equipment.



SURVEYED & PREPARED BY
EMH&T
 CONSULTING ENGINEERS & SURVEYORS
 170 MILL STREET
 GAHANNA, OHIO 43230
 (614) 471-5150

By *Clark E. White*
 Professional Surveyor No. 7868

SCALE: 1" = 100' DECEMBER 5, 2001