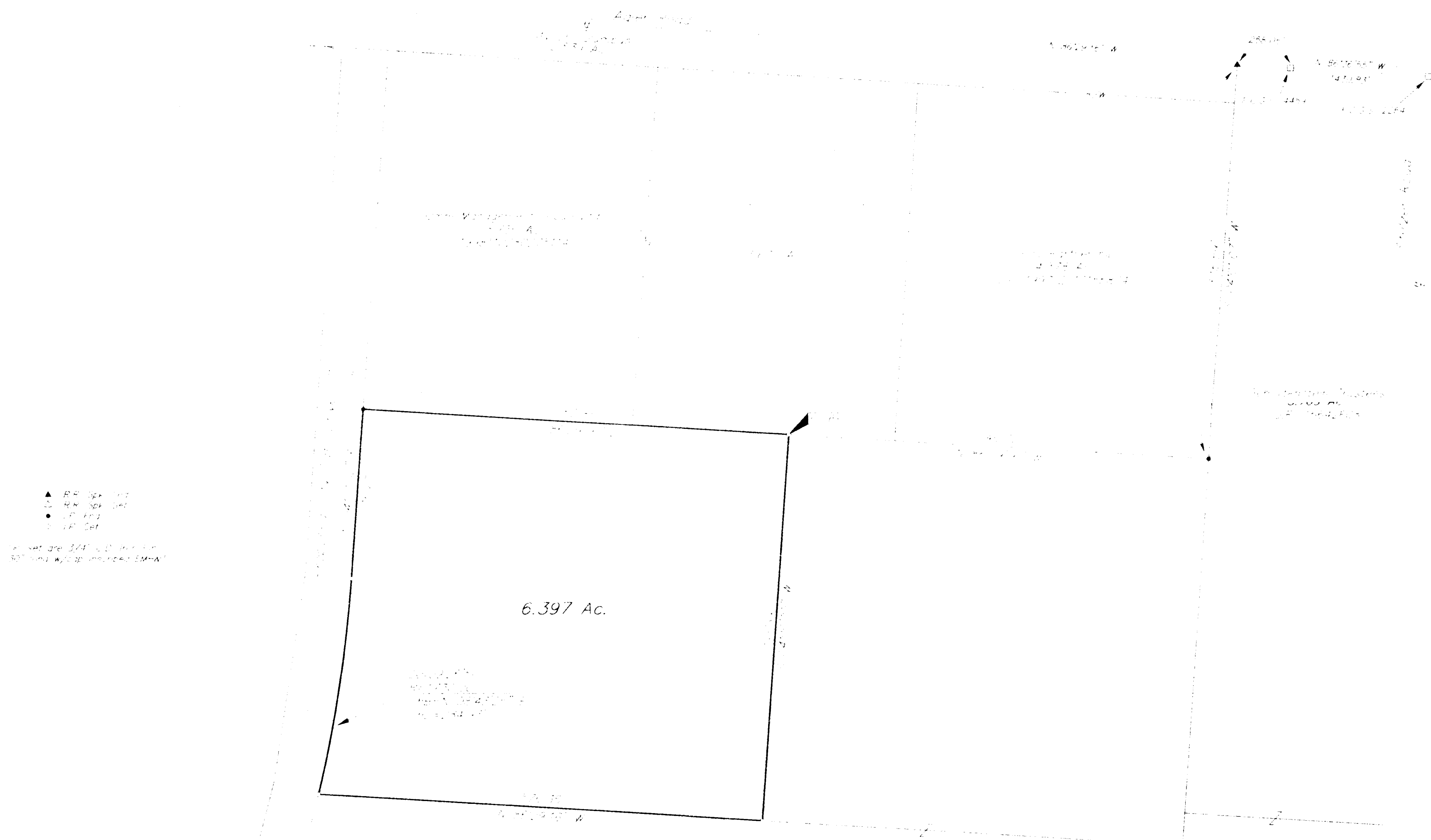


**SURVEY OF ACREAGE PARCEL**  
 LOCATED IN  
 QUARTER TOWNSHIP 3, TOWNSHIP 1, RANGE 17  
 UNITED STATES MILITARY LANDS  
 CITY OF COLUMBUS, FRANKLIN COUNTY, OHIO



▲ RR Spk. Lnt  
 ○ RR Spk. Cnt  
 ● L' Spk. Lnt  
 ○ L' Spk. Cnt  
 All lines are 3/4\"/>

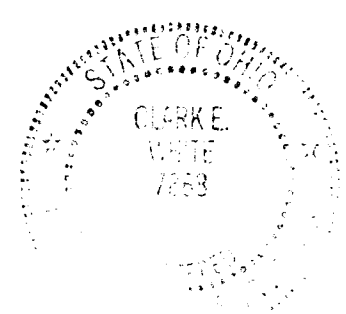
6.397 Ac.

8.410 Ac.  
 O.R. 3408610

4.416 Ac.  
 O.R. 15643710



GRAPHIC SCALE IN FEET



PREPARED BY  
**EMT** INC.  
 CONSULTING ENGINEERS & SURVEYORS  
 170 MILL STREET  
 GAHANNA, OHIO 43230  
 (614) 471-5150

By Cliff E. White  
 Professional Surveyor No. 7868

**BASIS OF BEARINGS:** The bearings shown hereon are based on the same meridian as the centerline of Agler Road, having a bearing of South 86°29'16" East, of record in Official Record 34086110, Recorder's Office, Franklin County, Ohio