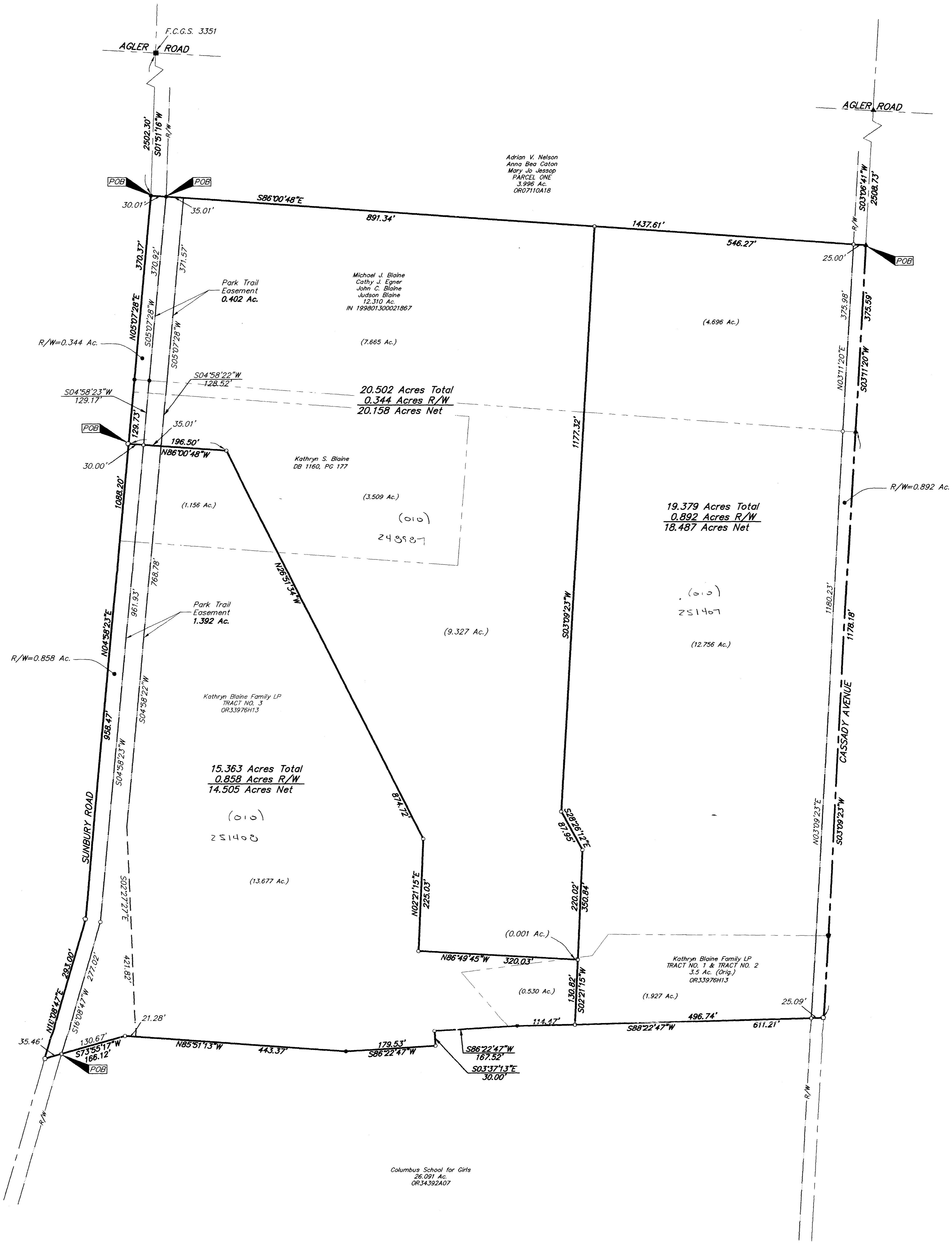
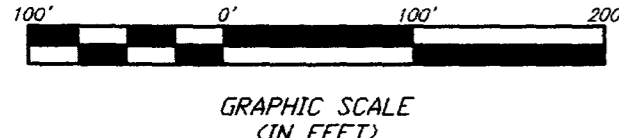


**SURVEY OF ACREAGE PARCELS**  
 LOCATED IN QUARTER TOWNSHIP 3, TOWNSHIP 1, RANGE 17  
 UNITED STATES MILITARY LANDS  
 CITY OF COLUMBUS, FRANKLIN COUNTY, OHIO



0:\PROJECT\506602\DWG\506602B.DWG - 0 XREFS - PLOTTED BY JELUSHBY - December 22, 1999 - 9:18 AM



- P.K. Nail Fnd.
- P.K. Nail Set
- ▲ R.R. Spk. Fnd.
- △ R.R. Spk. Set
- I.P. Fnd.
- I.P. Set

I.P. set are 3/4" O.D. Iron Pin  
 30" long w/cap inscribed EMH&T.

The basis of bearing for this description is based on the NAD 83 Ohio State Plane Coordinate System, South Zone. A bearing of N 54°15'02" W, between FCCS monuments Nos. 64 & 164, was determined by a GPS Survey performed by the Franklin County Engineer's Department.

PREPARED BY  
**EMT**  
 CONSULTING ENGINEERS & SURVEYORS  
 170 MILL STREET  
 GAHANNA, OHIO 43230  
 (614) 471-5150

By *Jeffrey A. Miller* 1-03-00  
 Professional Surveyor No. 7211

STATE OF OHIO  
 REGISTERED PROFESSIONAL SURVEYOR  
 JEFFREY A. MILLER  
 7211