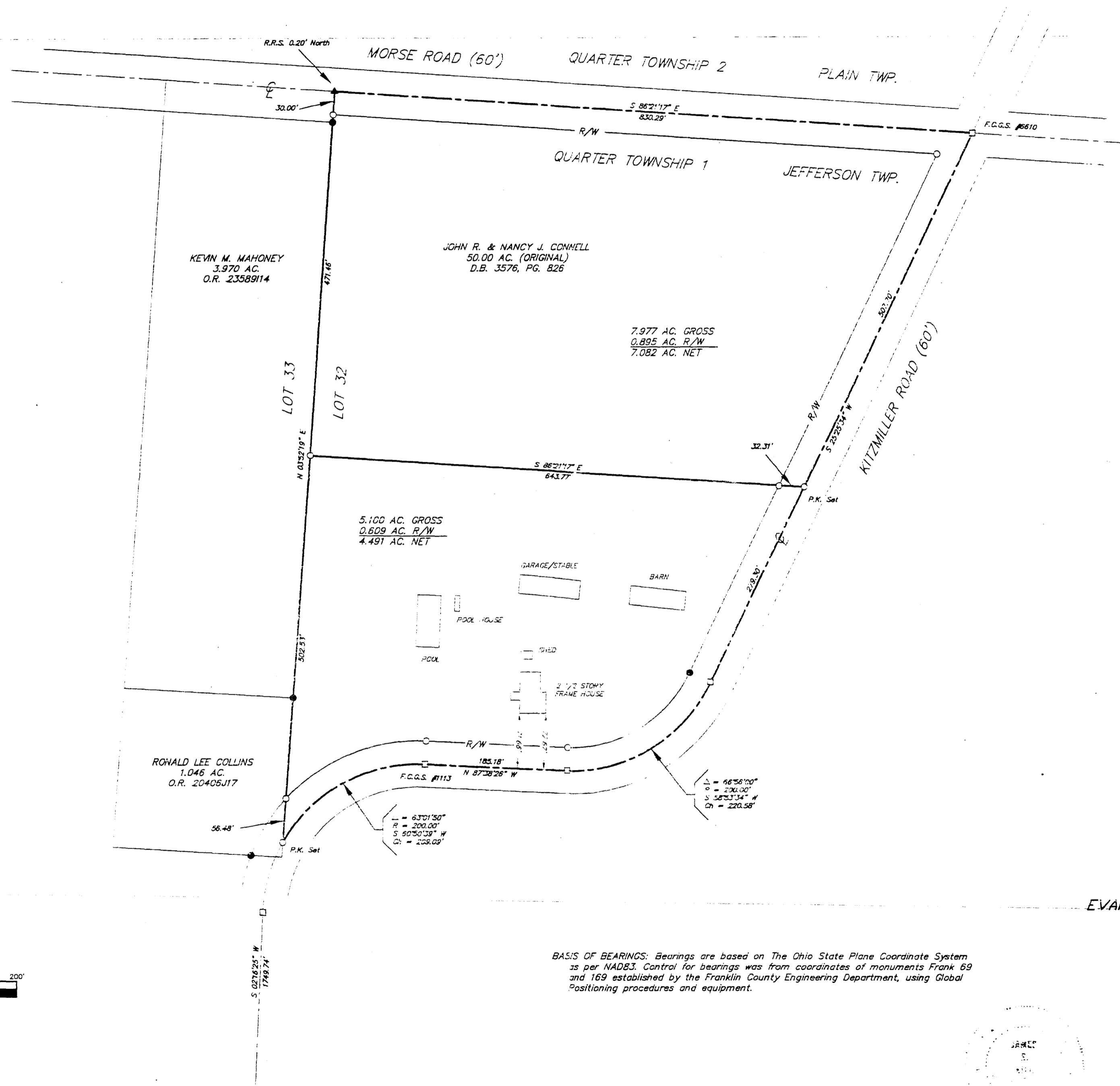


SURVEY OF ACREAGE PARCELS  
 LOCATED IN  
 LOT 32, QUARTER TOWNSHIP 1, TOWNSHIP 1, RANGE 16  
 UNITED STATES MILITARY LANDS  
 JEFFERSON TOWNSHIP, FRANKLIN COUNTY, OHIO



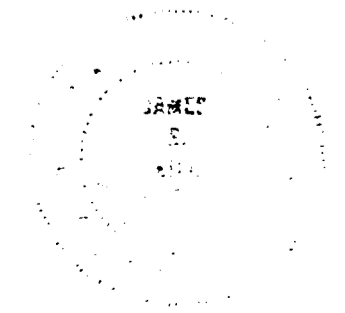
□ = F.C.G.S. Monument  
 ▲ = R.R. Spk. Fnd.  
 △ = R.R. Spx. Set  
 ● = I.P. Fnd.  
 ○ = I.P. Set  
 I.P. Set are 3/4" O.D. Iron Pin  
 30" long w/cap inscribed E.M.H.&T.



BASIS OF BEARINGS: Bearings are based on The Ohio State Plane Coordinate System as per NAD83. Control for bearings was from coordinates of monuments Frank 69 and 169 established by the Franklin County Engineering Department, using Global Positioning procedures and equipment.

Surveyed & Platted  
 By  
**EVANS, MECHWART, HAMBLETON & TILTON, INC.**  
 CONSULTING ENGINEERS & SURVEYORS  
 170 MILL STREET  
 GAHANNA, OHIO 43230  
 614/471-5150

SCALE: 1" = 100'    JANUARY 9, 1996



BY James R. Hill  
 PROFESSIONAL SURVEYOR NO. 6919