

SURVEY OF ACREAGE PARCELS
 Located In Section 2, Township 1, Range 16
 United States Military Lands
 Jefferson Township, Franklin County, Ohio

Frederick W. & M. B. Leveque
 16.969 Ac.
 O.R. 0416 A17

Helen E. Gantner
 11.853 Ac.
 D.B. 2255, Pg. 440

Frederick E. Jones, Jr.
 14.275 Ac.
 D.B. 2689, Pg. 306

Davis & Son, Inc.
 160.025 Ac.
 D.B. 3708, Pg. 718

Sara T. Stone
 D.B. 3385, Pg. 565

Donald B. Shackelford
 24.000 Ac.
 D.B. 3700, Pg. 395

Don M. Costa, Jr.
 29.853 Ac.
 D.B. 3528, Pg. 592

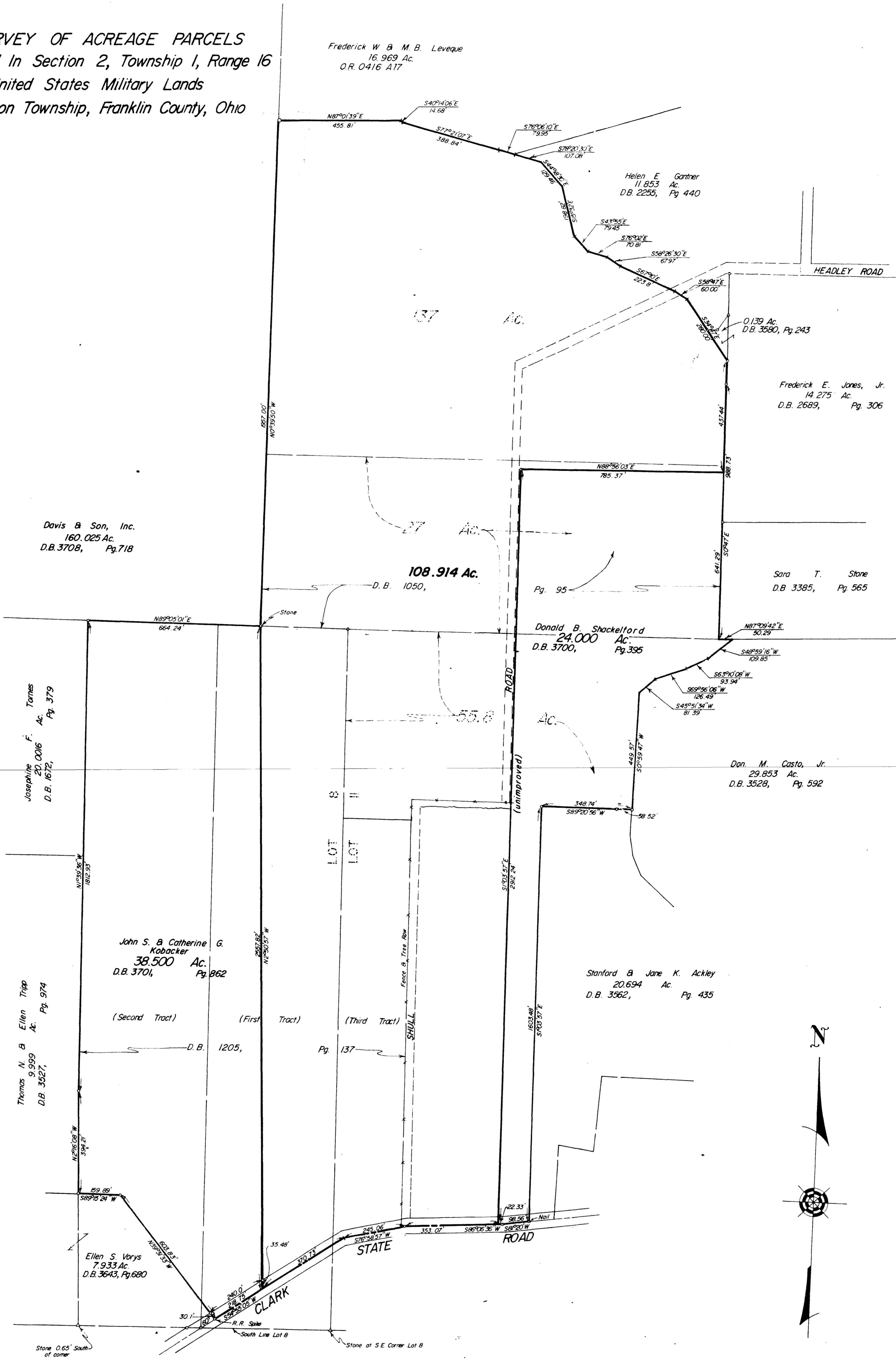
Stanford & Jane K. Ackley
 20.694 Ac.
 D.B. 3562, Pg. 435

John S. & Catherine G. Kobacker
 38.500 Ac.
 D.B. 3701, Pg. 862

Thomas N. & Ellen Tripp
 9.999 Ac.
 D.B. 3627, Pg. 974

Josephine F. Tames
 20.006 Ac.
 D.B. 1672, Pg. 379

Ellen S. Vorys
 7.933 Ac.
 D.B. 3643, Pg. 680



SURVEYED & PLATTED
 BY
EVANS, MECHWART, HAMBLETON & TILTON, INC.
 CONSULTING ENGINEERS AND SURVEYORS
 GAHANNA, OHIO

By Thomas D. Schell
 Registered Surveyor No. 5908

SCALE: 1" = 200'

○ = IRON PIN

DECEMBER 1, 1978

Revised November 11, 1985