

SURVEY OF ACREAGE PARCEL
 QUARTER TOWNSHIP 1, TOWNSHIP 1, RANGE 17
 UNITED STATES MILITARY LANDS
 CITY OF GAHANNA, FRANKLIN COUNTY, OHIO

Mon. #8817



50

51

Academy Ridge
 Section 3
 P.B. 82, Pg. 31

52

53

54

The Village at Castle
 Pines Condominiums

Lion Academy Village
 P.B. 75, Pg. 99

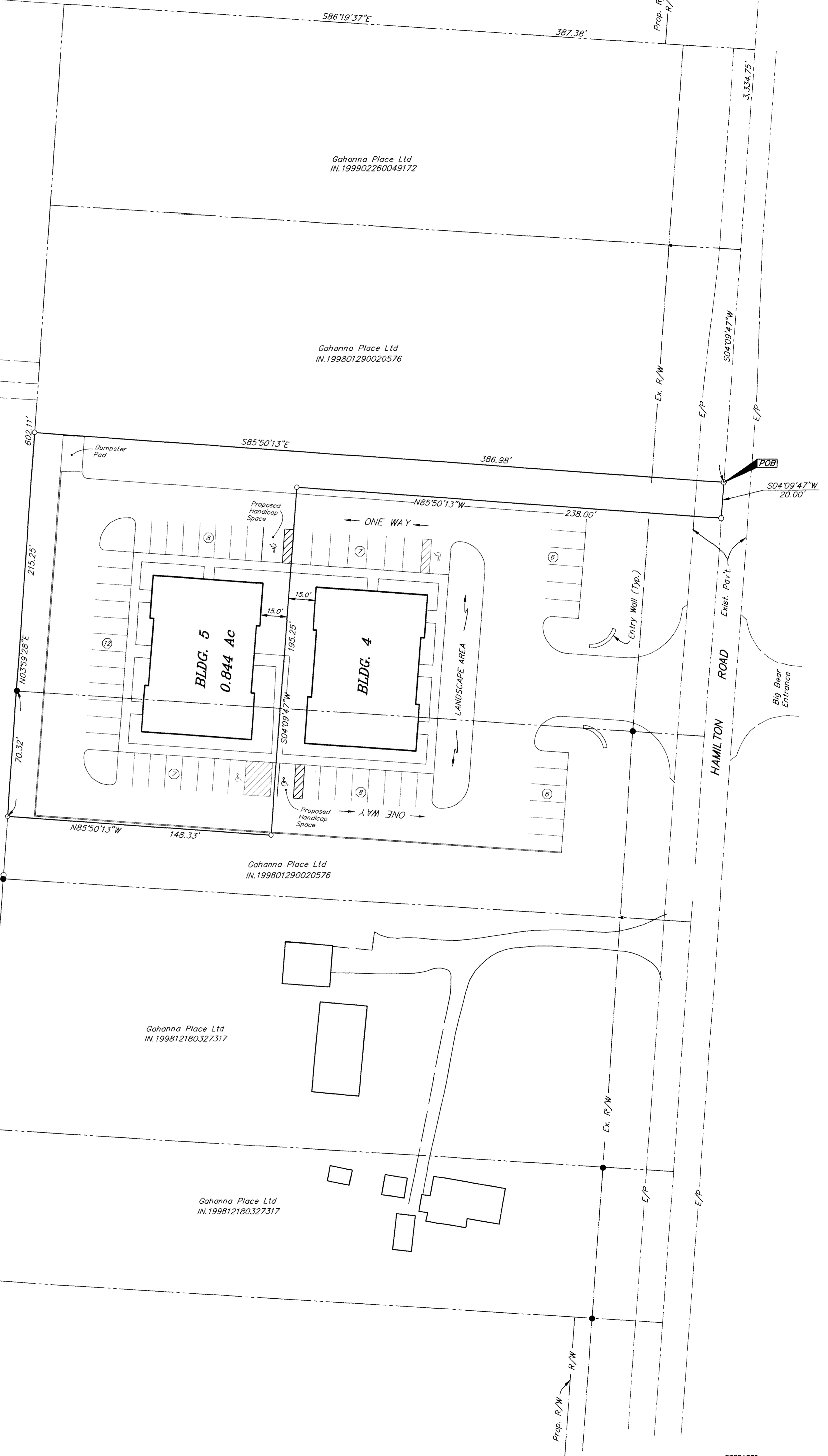
Gahanna Place Ltd
 IN.199902260049172

Gahanna Place Ltd
 IN.199801290020576

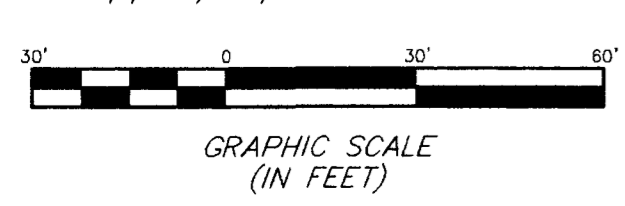
Gahanna Place Ltd
 IN.199801290020576

Gahanna Place Ltd
 IN.199812180327317

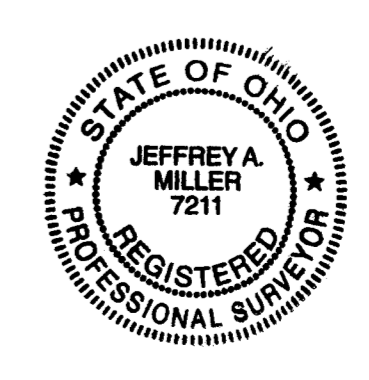
Gahanna Place Ltd
 IN.199812180327317



- = MON. FND.
 - = I.P. FND.
 - = I.P. SET
 - = MAG. NAIL FND.
 - = MAG. NAIL SET
 - ▲ = R.R. SPK. FND.
 - △ = R.R. SPK. SET
 - ◆ = P.K. NAIL FND.
- I.P.S. Set are 1 3/16" I.D. Iron pipe W/ cap inscribed EMHT INC



The Basis of Bearing is the centerline of Hamilton Road, being South 04°09'47" West as shown on the plat of Lion Academy Village of record in Plat Book 75, Page 99
 Records Office, Franklin County, Ohio



PREPARED BY
EMT
 CONSULTING ENGINEERS & SURVEYORS
 170 MILL STREET
 GAHANNA, OHIO 43230
 (614) 471-5150

By *Jeffrey A. Miller* 4-23-02
 Professional Surveyor No. 7211
 SCALE: 1" = 30'
 APRIL 19, 2002

G:\PROJECT\20020523\DWG\20020523.DWG - D:\PREFS - PLOTTED BY JMM/ELW - April 22, 2002 - 8:49 AM