

SURVEY OF ACREAGE PARCELS

QTR TWP 1 TWP 1 RNG 17 USML

CITY OF GAHANNA, FRANKLIN COUNTY, OHIO

The Basis of Bearing is the centerline of Hamilton Road, being South 04°09'47" West as shown on the plat of LION ACADEMY VILLAGE of record in Plat Book 75 Page 99 Recorders Office, Franklin County, Ohio

According to the Federal Emergency Management Agency's Flood Insurance Rate Map (dated August 2, 1995), the subject parcel shown hereon lies within Zone X (areas determined to be outside 500-year flood plain), Community Panel No. 39049C0186G.

Academy Ridge
Section 3 PB 82, PG 31

The Village at Castle Pines
Condominiums

LEGEND	
	= Flag Pole
	= Power Pole
	= Telephone Pole
	= Signal Pole
	= Guy Wire
	= Light Pole
	= Water Valve
	= Gas Meter
	= Gas Valve
	= Electric Transformer
	= Telephone Pedestal
	= Sprinkler
	= Fire Hydrant
	= Cable Pedestal
	= Catch Basin
	= Curb Inlet
	= Fence
	= Flowarrow
	= Sign
	= Mail Box
	= Water Line
	= Gas Line
	= Storm Line
	= Sanitary Manhole
	= Sanitary Line
	= Underground Electric
	= Overhead Electric
	= Underground Telephone
	= Overhead Telephone
	= Cable TV
	= Centerline
	= Right of Way Line

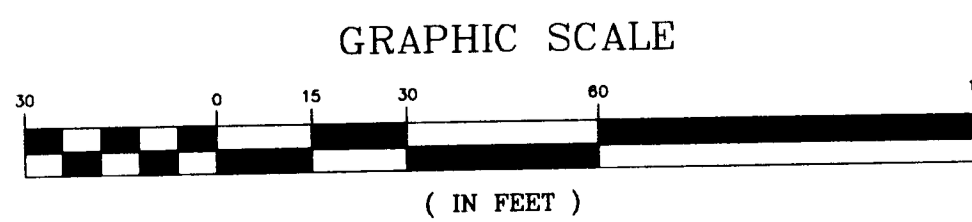


CERTIFICATION: (Commitment No. 5310AE07-M)

To: Fifth Third Bank, Amerititle East and First American Title Insurance Company.

This is to certify, to the best of my knowledge and belief, that this map and the survey on which it is based were made in accordance with Minimum Standard Detail Requirements for ALTA, ACSM and NSPS in 1997, and includes items 1, 3 & 4 of Table A thereof, and pursuant to the Accuracy Standards (as adapted by ALTA and ACSM and in effect on the date of this certification) of an Urban Survey. The Parcels shown hereon are contiguous along their Common boundaries without strips, gaps, gores or overlaps.

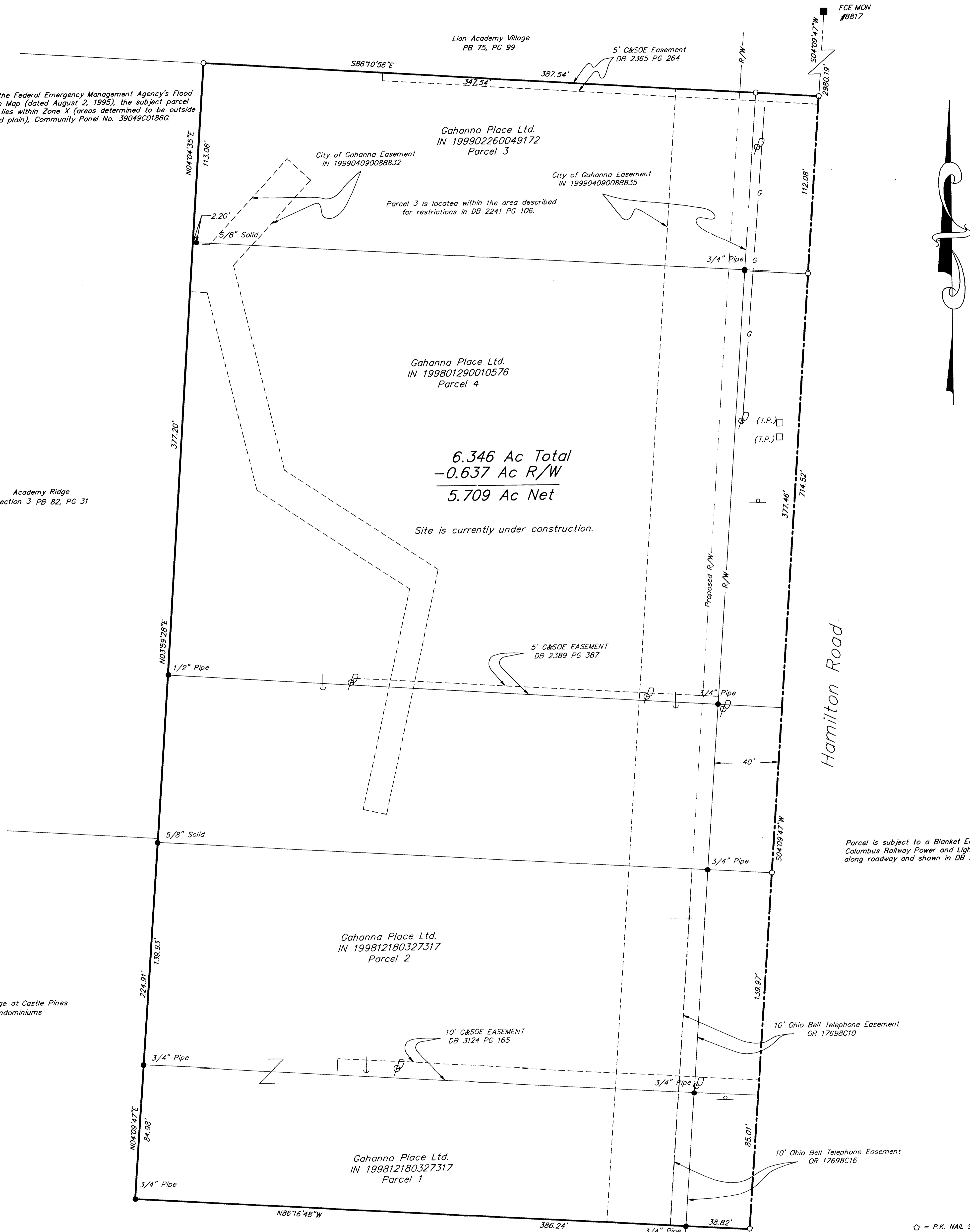
By *Jeffrey A. Miller* 9-1-99
Professional Surveyor No. 7211



Surveyed & Prepared
By
EVANS, MECHWART, HAMBLETON & TILTON INC.
CONSULTING ENGINEERS & SURVEYORS
170 MILL STREET
GAHANNA, OHIO 43230
614/471-5150

SCALE: 1" = 30' SEPTEMBER 1, 1999

GHANNA PLACE / S06366/S6366bv



Parcel is subject to a Blanket Easement to Columbus Railway Power and Light Company along roadway and shown in DB 958, PG 35.