

SURVEY OF ACREAGE PARCELS
 LOCATED IN THE SECOND QUARTER, TOWNSHIP 1, RANGE 16
 UNITED STATES MILITARY LANDS
 CITY OF GAHANNA, FRANKLIN COUNTY, OHIO

R.M. & E.J. Windrel
 3.886 Ac.
 D.B. 2492, Pg. 246

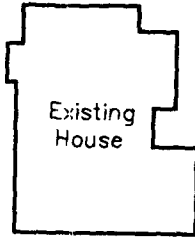
(40')

ROAD

SHULL

5.506 Ac.

K. Boyd Fackler
 In. No. 199901270021061



5.000 Ac.

(VACANT)

Louis A. & Marsha A.
 Mampiere
 O.R. 14129A07

THE ESTATES OF ROCKY FORK
 SECTION 1
 21 Pg. 89
 20 P. B. 76,

39

SECTION 2
 38

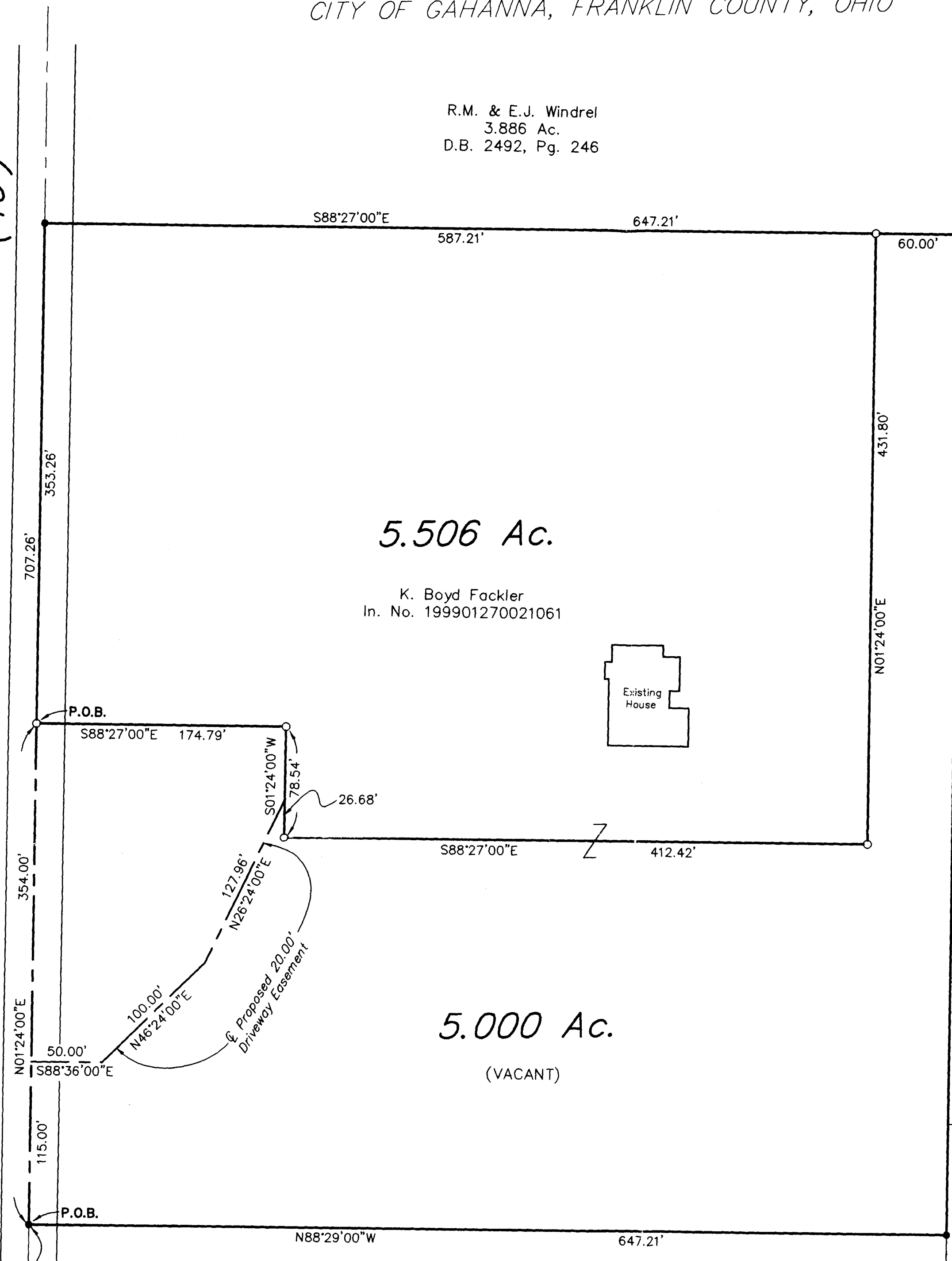
FORK
 37 Pg. 37

ROCKY
 37

OF
 36 P. B. 80,

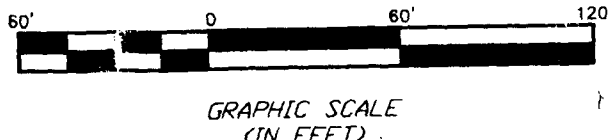
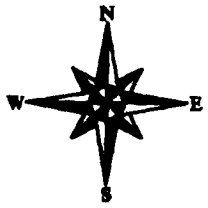
THE
 35

34



BASIS OF BEARINGS:
 The bearings shown hereon are based on the same meridian as the centerline of Shull Road (N1°24'00"E) of record in Official Record 14129A07, Franklin County Recorder's Office.

SURVEYED & PREPARED BY
EMH&T
 CONSULTING ENGINEERS & SURVEYORS
 170 MILL STREET
 GAHANNA, OHIO 43230
 (614) 471-5150



- ▲ R.R. Spk. Fnd.
- △ R.R. Spk. Set
- I.P. Fnd.
- I.P. Set

I.P. set are 3/4" O.D. Iron Pin
 30" long w/cap inscribed EMH&T.



By *Thomas D. Sibbalds*
 Professional Surveyor No. 5908

SCALE: 1" = 60' JULY 21, 1999

L:\SEC\K-4\SURVEY\PROJECT\19990863.DWG 0086.3AS.DWG - D. KRETS - PLOTTED BY RPARKER - July 26, 1999 - 8:15 AM