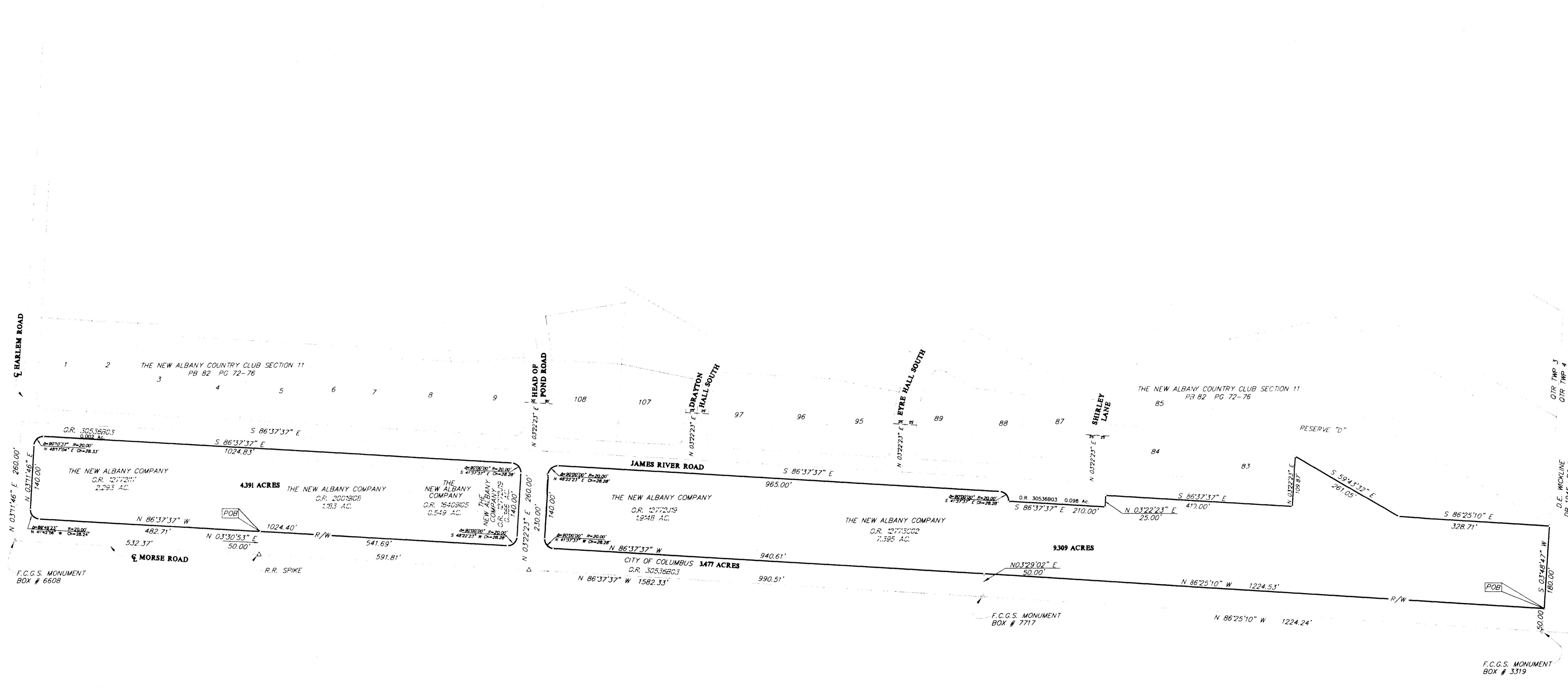


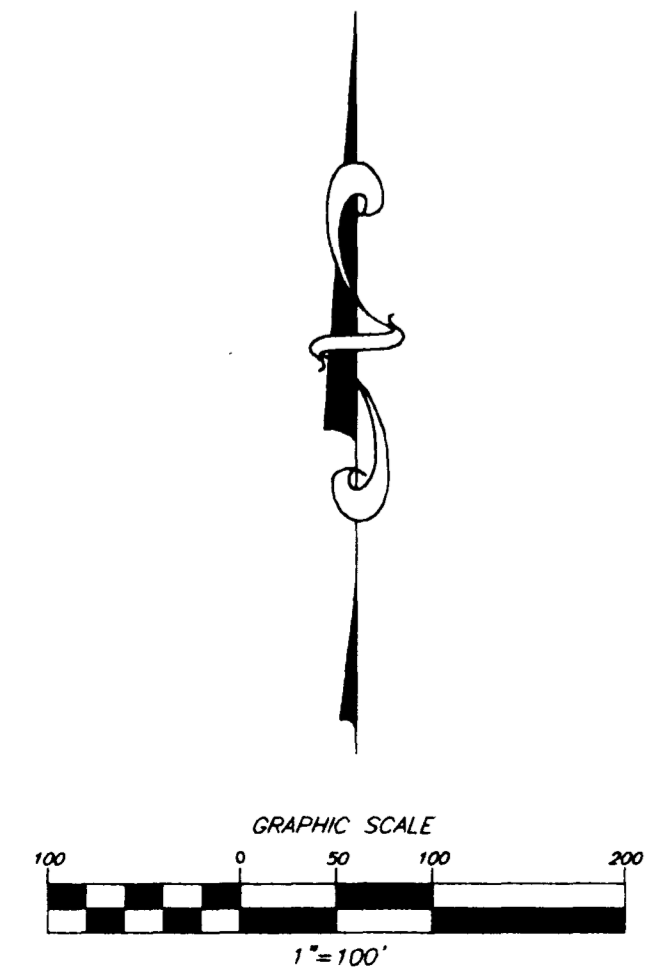
**SURVEY OF ACREAGE PARCELS**  
 QUARTER TOWNSHIP 3, TOWNSHIP 2, RANGE 16  
 UNITED STATES MILITARY LANDS  
 VILLAGE OF NEW ALBANY, CITY OF COLUMBUS, COUNTY OF FRANKLIN



**BASIS OF BEARINGS:**  
 Bearings are based on The Ohio State Plane Coordinate System as per NAD83. Control for bearings was from coordinates of monuments Frank 69 and 169, established by the Franklin County Engineering Department, using Global Positioning System procedures and equipment and establishes the centerline of Morse Road as being N 86° 37' 37" W

- = MONUMENT BOX
  - ▲ = R.R. SPK. FND.
  - △ = R.R. SPK. SET
  - = I.P. FND.
  - = I.P. SET
- I.P.S. Set are 3/4" O.D. Iron pipe W/ cap inscribed EMT&T.

SIGNED *Donald H. Gilbert*  
 PROFESSIONAL SURVEYOR NO. 5425



SURVEYED AND REPAIRED BY:  
**EMT & T**  
 CONSULTING ENGINEERS, SURVEYORS & LAND PLANNERS  
 170 WILL STREET  
 GABIANA, OHIO 43130  
 (614) 471-5150  
 SCALE 1"=100'      FEBRUARY 4, 1998